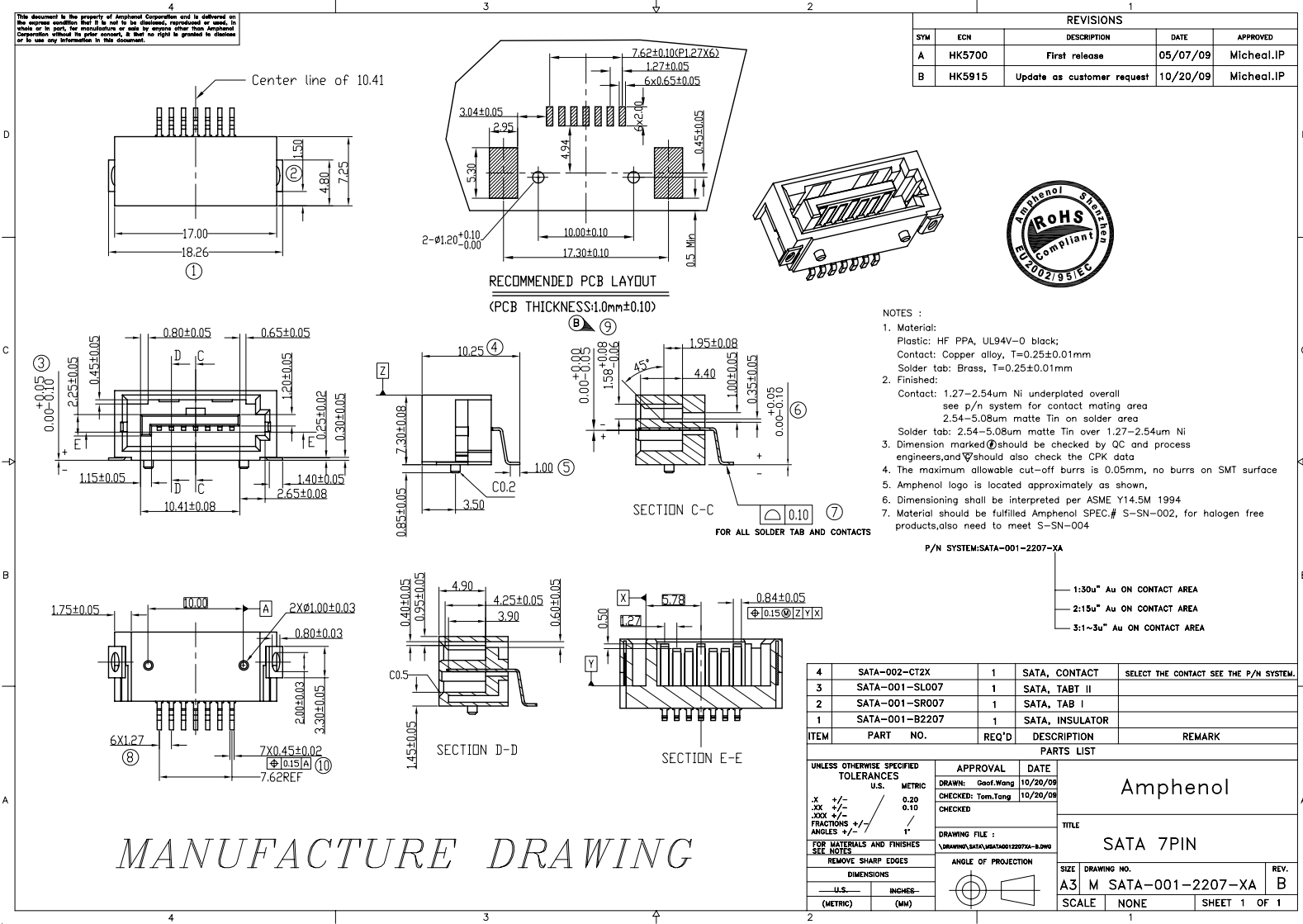


This document is the property of Amphenol Corporation and is delivered on the express condition that it is not to be distributed, reproduced or used, in whole or in part, for manufacture or sale by anyone other than Amphenol Corporation without its prior consent. All rights are granted to divisions or to use any information in this document.



REVISIONS				
SYM	ECN	DESCRIPTION	DATE	APPROVED
A	HK5700	First release	05/07/09	Michael.IP
B	HK5915	Update as customer request	10/20/09	Michael.IP

- NOTES :
- Material:  
Plastic: HF PPA, UL94V-0 black;  
Contact: Copper alloy, T=0.25±0.01mm  
Solder tab: Brass, T=0.25±0.01mm
  - Finished:  
Contact: 1.27-2.54um Ni underplated overall see p/n system for contact mating area  
2.54-5.08um matte Tin on solder area  
Solder tab: 2.54-5.08um matte Tin over 1.27-2.54um Ni
  - Dimension marked (D) should be checked by QC and process engineers, and (V) should also check the CPK data
  - The maximum allowable cut-off burrs is 0.05mm, no burrs on SMT surface
  - Amphenol logo is located approximately as shown,
  - Dimensioning shall be interpreted per ASME Y14.5M 1994
  - Material should be fulfilled Amphenol SPEC.# S-SN-002, for halogen free products, also need to meet S-SN-004

P/N SYSTEM: SATA-001-2207-XA

- 1:30u" Au ON CONTACT AREA
- 2:15u" Au ON CONTACT AREA
- 3:1-3u" Au ON CONTACT AREA

ITEM	PART NO.	REQ'D	DESCRIPTION	REMARK
4	SATA-002-CT2X	1	SATA, CONTACT	SELECT THE CONTACT SEE THE P/N SYSTEM.
3	SATA-001-SL007	1	SATA, TAB II	
2	SATA-001-SR007	1	SATA, TAB I	
1	SATA-001-B2207	1	SATA, INSULATOR	

UNLESS OTHERWISE SPECIFIED TOLERANCES		APPROVAL		DATE
U.S.	METRIC	DRAWN:	Goof.Wang	10/20/09
.X	+/-	CHECKED:	Tom.Tang <td>10/20/09 </td>	10/20/09
.XX	+/-	CHECKED:		
.XXX	+/-			
FRACTIONS	+/-			
ANGLES	+/-			
FOR MATERIALS AND FINISHES SEE NOTES		DRAWING FILE :	\DRAWING\DATA\DATA0122070-3.dwg	
REMOVE SHARP EDGES		ANGLE OF PROJECTION		
DIMENSIONS		SIZE	DRAWING NO.	REV.
U.S.	INCHES	A3	M SATA-001-2207-XA	B
(METRIC)	(MM)	SCALE	NONE	SHEET 1 OF 1

MANUFACTURE DRAWING