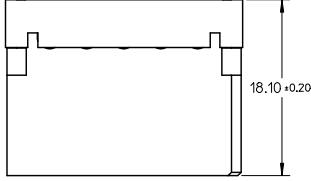
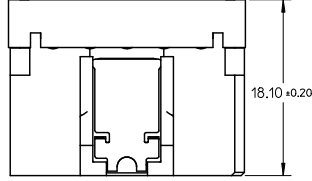
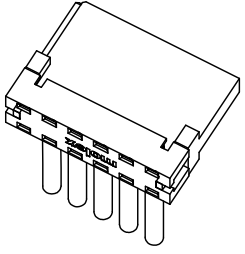
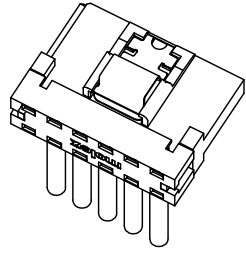
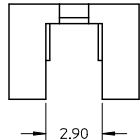
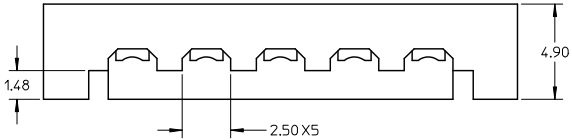
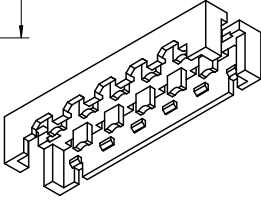
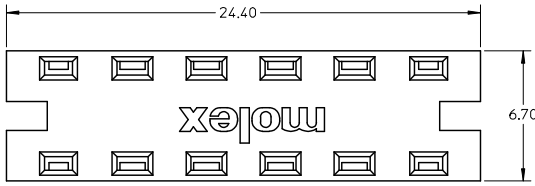


10 9 8 7 6 5 4 3 2 1



APPLICATION FOR WITH LATCH TYPE

APPLICATION FOR WITHOUT LATCH TYPE

- NOTE**
- MATERIAL: THERMAL PLASTIC, COLOR: BLACK UL94V-0.
  - THIS COVER IS FEED TO TYPE, IT IS AVAILABLE FOR 67926-000\*(WITH LATCH), 67926-001\*(WITHOUT LATCH).
  - PACKAGE SPEC:
    - 3.1 1000 PCS IN ONE BAG.
    - 3.2 3000 PCS(3 PAGES) IN ONE INNER CARTON.
    - 3.3 12,000 PCS(4 INNER CARTONS) IN ONE OUTER CARTON.

P/N	REMARK
67926-0040	NON HALOGEN-FREE
67926-0840	HALOGEN-FREE

<b>ADD PART NUMBER</b> EC NO: SH2009-0536 TDRWNX:JISONG 2009/05/05 CHKDX:JISONG 2009/06/10 APPR:HWANG 2009/06/23 REV DESCRIPTION	QUALITY SYMBOLS	GENERAL TOLERANCES (UNLESS SPECIFIED)	DIMENSION STYLE	SCALE	DESIGN UNITS	THIRD ANGLE PROJECTION																		
	▽=0 ▽=0	<table border="1"> <thead> <tr> <th></th> <th>mm</th> <th>INCH</th> </tr> </thead> <tbody> <tr> <td>4 PLACES</td> <td>± 0.15</td> <td>± 0.006</td> </tr> <tr> <td>3 PLACES</td> <td>± 0.25</td> <td>± 0.010</td> </tr> <tr> <td>2 PLACES</td> <td>± 0.30</td> <td>± 0.012</td> </tr> <tr> <td>1 PLACE</td> <td>± 0.40</td> <td>± 0.016</td> </tr> <tr> <td colspan="3">ANGULAR ± 1 °</td> </tr> </tbody> </table>		mm	INCH	4 PLACES	± 0.15	± 0.006	3 PLACES	± 0.25	± 0.010	2 PLACES	± 0.30	± 0.012	1 PLACE	± 0.40	± 0.016	ANGULAR ± 1 °			MM ONLY	5:1	METRIC	DRAWN BY GRATE MA DATE 2004/04/25 CHECKED BY YA JUN DATE 2004/04/25 APPROVED BY SAM DATE 2004/04/25
		mm	INCH																					
	4 PLACES	± 0.15	± 0.006																					
3 PLACES	± 0.25	± 0.010																						
2 PLACES	± 0.30	± 0.012																						
1 PLACE	± 0.40	± 0.016																						
ANGULAR ± 1 °																								
DRAFT WHERE APPLICABLE MUST REMAIN WITHIN DIMENSIONS	SEE TABLE	MATERIAL NO.	DOCUMENT NO.	TITLE FEED TO COVER FOR SATA POWER CONNECTOR IDT TYPE MOLEX INCORPORATED SD-67926-003																				
						SHEET NO. 1 OF 1																		

9 8 7 6 5 4 3 2 1