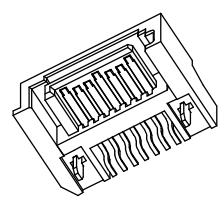
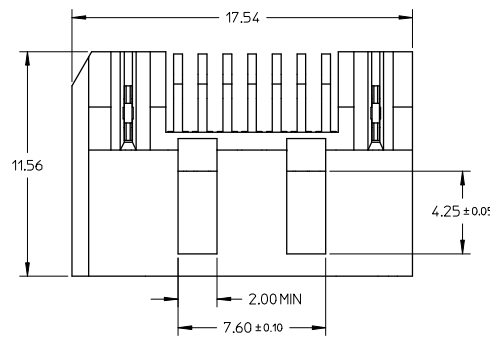
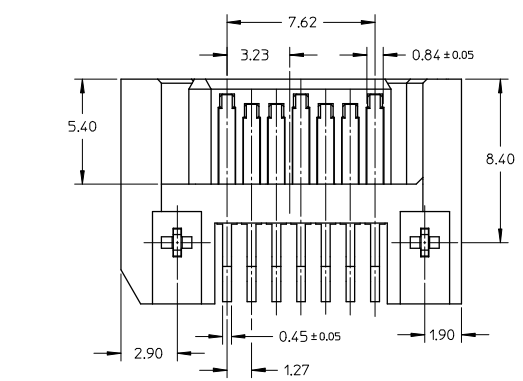
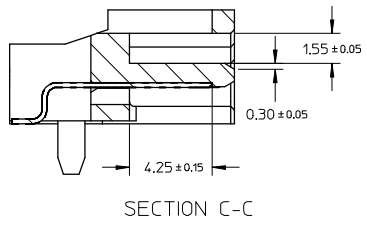
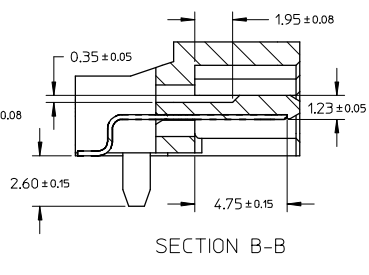
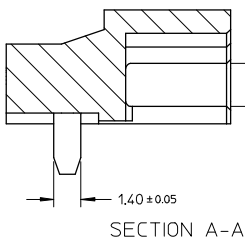
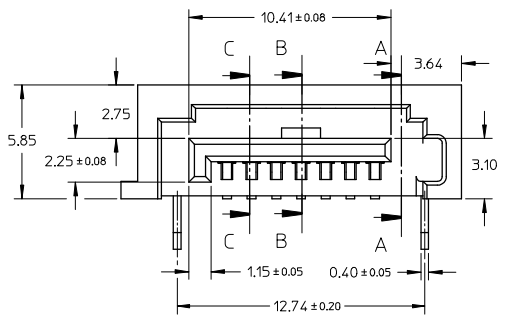


10 9 8 7 6 5 4 3 2 1



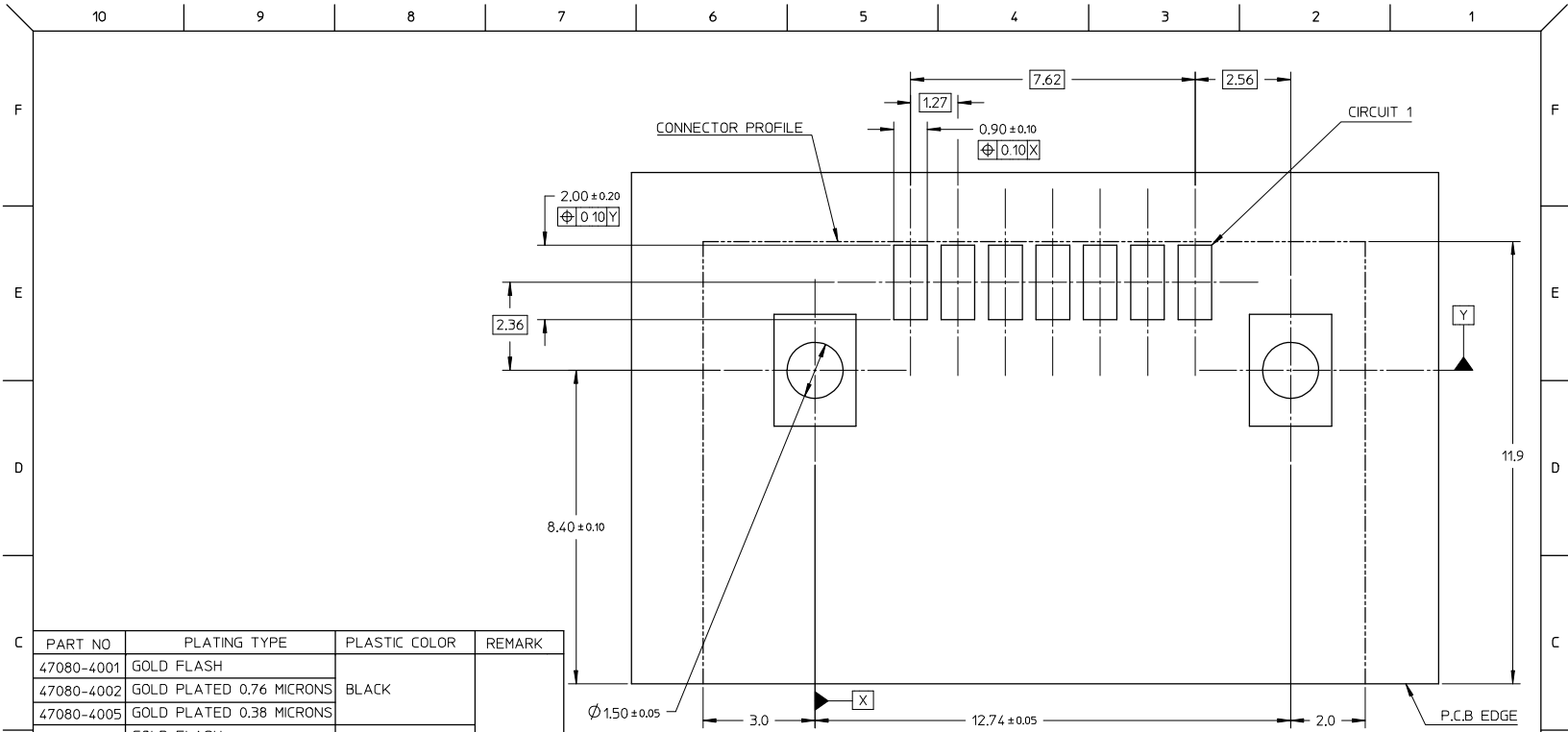
- NOTES:
- MATERIAL:
HOUSING: HIGH TEMPERATURE PLASTIC, GLASS FILLED, UL94V-0, COLOR: SEE CHART,
TERMINAL/PEG: COPPER ALLOY,
MYLAR: ADHESIVE TAPE.
 - TERMINAL AND PEG PLATING:
CONTACT AREA: GOLD PLATED ON 1.25 MICRONS MINIMUM NICKEL UNDER PLATE,
REFERRED TO PLATING TYPE LIST IN TABLE,
SOLDER AREA: 1.27 MICRONS PURE TIN PLATED ON 1.25 MICRONS
MINIMUM NICKEL UNDER PLATE, REFERRED TO REMARK IN TABLE.
 - PRODUCT SPECIFICATION REFER TO PS-67490-001.
 - MATING PART: 67489.
 - PRODUCT COMPLIANT TO RoHS DIRECTIVE 2002/95/EC AND ELV 2000/53/EC.



UPDATE DRAWING EC NO: SH2009-0041 TDRWNL SONG09 2008/08/06 CHYKDX JONG 2008/08/07 APPR:HMANG 2008/08/26 REV DESCRIPTION	QUALITY SYMBOLS	GENERAL TOLERANCES (UNLESS SPECIFIED)	DIMENSION STYLE	SCALE	DESIGN UNITS	THIRD ANGLE PROJECTION																		
	$\nabla=0$ $\sphericalangle=0$	<table border="1"> <tr> <th></th> <th>mm</th> <th>INCH</th> </tr> <tr> <td>4 PLACES</td> <td>± 0.15</td> <td>± 0.006</td> </tr> <tr> <td>3 PLACES</td> <td>± 0.25</td> <td>± 0.010</td> </tr> <tr> <td>2 PLACES</td> <td>± 0.30</td> <td>± 0.012</td> </tr> <tr> <td>1 PLACE</td> <td>± 0.40</td> <td>± 0.016</td> </tr> <tr> <td colspan="3">ANGULAR ± 1°</td> </tr> </table>		mm	INCH	4 PLACES	± 0.15	± 0.006	3 PLACES	± 0.25	± 0.010	2 PLACES	± 0.30	± 0.012	1 PLACE	± 0.40	± 0.016	ANGULAR ± 1°			MM ONLY	1:1	METRIC	
		mm	INCH																					
	4 PLACES	± 0.15	± 0.006																					
3 PLACES	± 0.25	± 0.010																						
2 PLACES	± 0.30	± 0.012																						
1 PLACE	± 0.40	± 0.016																						
ANGULAR ± 1°																								
DRAFT WHERE APPLICABLE MUST REMAIN WITHIN DIMENSIONS	<table border="1"> <tr> <td>DRAWN BY</td> <td>DATE</td> </tr> <tr> <td>GRATE MA</td> <td>2004/06/14</td> </tr> <tr> <td>CHECKED BY</td> <td>DATE</td> </tr> <tr> <td>GRATE MA</td> <td>2004/06/14</td> </tr> <tr> <td>APPROVED BY</td> <td>DATE</td> </tr> <tr> <td>VINCENT</td> <td>2004/06/14</td> </tr> </table>	DRAWN BY	DATE	GRATE MA	2004/06/14	CHECKED BY	DATE	GRATE MA	2004/06/14	APPROVED BY	DATE	VINCENT	2004/06/14	<table border="1"> <tr> <td>TITLE</td> <td>SATA SYSTEM PLUG PEG INSERT TYPE WITH SHROUD</td> </tr> <tr> <td>DOCUMENT NO.</td> <td>SD-47080-001</td> </tr> <tr> <td>SHEET NO.</td> <td>1 OF 2</td> </tr> </table>	TITLE	SATA SYSTEM PLUG PEG INSERT TYPE WITH SHROUD	DOCUMENT NO.	SD-47080-001	SHEET NO.	1 OF 2				
DRAWN BY	DATE																							
GRATE MA	2004/06/14																							
CHECKED BY	DATE																							
GRATE MA	2004/06/14																							
APPROVED BY	DATE																							
VINCENT	2004/06/14																							
TITLE	SATA SYSTEM PLUG PEG INSERT TYPE WITH SHROUD																							
DOCUMENT NO.	SD-47080-001																							
SHEET NO.	1 OF 2																							
MATERIAL NO. SEE SHEET 2		THIS DRAWING CONTAINS INFORMATION THAT IS PROPRIETARY TO MOLEX INCORPORATED AND SHOULD NOT BE USED WITHOUT WRITTEN PERMISSION																						

ib_frame_A3_P_AM_T
Rev. E 2006/04/15

9 8 7 6 5 4 3 2 1



PART NO	PLATING TYPE	PLASTIC COLOR	REMARK
47080-4001	GOLD FLASH	BLACK	BRIGHT TIN
47080-4002	GOLD PLATED 0.76 MICRONS		
47080-4005	GOLD PLATED 0.38 MICRONS		
47080-5001	GOLD FLASH	NATURE COLOR	BRIGHT TIN
47080-5002	GOLD PLATED 0.76 MICRONS		
47080-5005	GOLD PLATED 0.38 MICRONS		
47080-6001	GOLD FLASH	PROCESS BLUE C	DELTA E<3
47080-6002	GOLD PLATED 0.76 MICRONS		
47080-6005	GOLD PLATED 0.38 MICRONS		
47080-1010	GOLD FLASH	BLACK	MATTE TIN
47080-1020	GOLD PLATED 0.76 MICRONS		
47080-1030	GOLD PLATED 0.38 MICRONS		
47080-2010	GOLD FLASH	NATURE COLOR	MATTE TIN
47080-2020	GOLD PLATED 0.76 MICRONS		
47080-2030	GOLD PLATED 0.38 MICRONS		
47080-3010	GOLD FLASH	PROCESS BLUE C	DELTA E<3
47080-3020	GOLD PLATED 0.76 MICRONS		
47080-3030	GOLD PLATED 0.38 MICRONS		

UPDATE DRAWING EC NO: SH2009-0041 DRAWN: SONG09 2008/08/06 CHKD: JISSONG 2008/08/07 APPR: HWIANG 2008/08/26	QUALITY SYMBOLS ▽=0 ▽=0	GENERAL TOLERANCES (UNLESS SPECIFIED)		DIMENSION STYLE MM ONLY		SCALE 1:1	DESIGN UNITS METRIC	THIRD ANGLE PROJECTION	
		4 PLACES ± --- ± ---	mm INCH	DRAWN BY GRATE MA	DATE 2004/06/14	TITLE SATA SYSTEM PLUG PEG INSERT TYPE WITH SHROUD			
		3 PLACES ± --- ± ---		CHECKED BY GRATE MA	DATE 2004/06/14	MOLEX INCORPORATED			
		2 PLACES ± 0.15 ± ---		APPROVED BY VINCENT	DATE 2004/06/14	MATERIAL NO. DOCUMENT NO. SHEET NO. SEE TABLE SD-47080-001 2 OF 2			
DRAFT WHERE APPLICABLE MUST REMAIN WITHIN DIMENSIONS		SIZE A3		THIS DRAWING CONTAINS INFORMATION THAT IS PROPRIETARY TO MOLEX INCORPORATED AND SHOULD NOT BE USED WITHOUT WRITTEN PERMISSION					