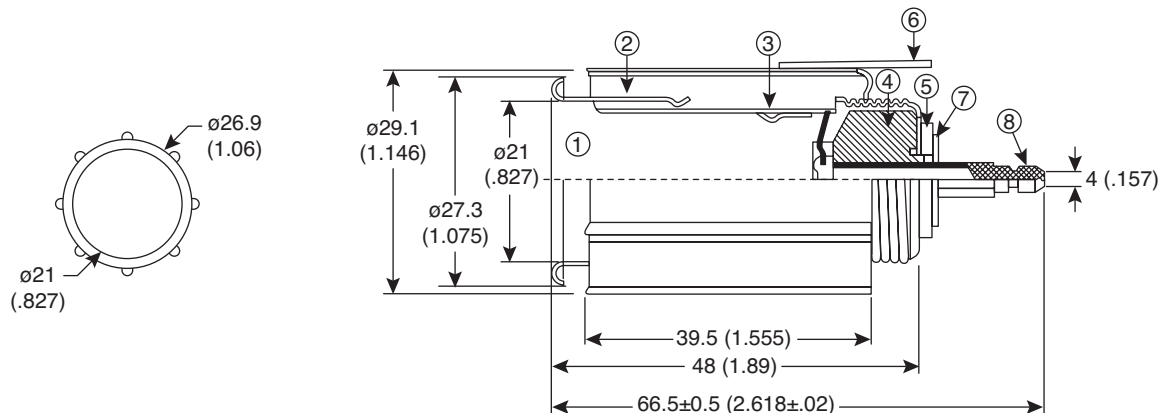
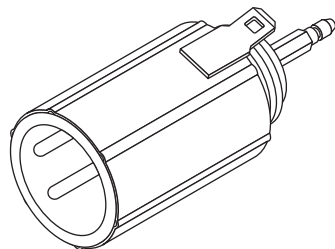


Auto Power Socket

161-2050



Auto Power Socket



Dimensions: mm (In.)

| SPECIFICATIONS | |
|----------------|----------------|
| Type: | 12VDC 10A max. |

| No. | Part Name | Material | Electroplated |
|-----|------------------|----------|---------------|
| 1 | Tube | Iron | Nickel plated |
| 2 | Casing | Iron | Color plated |
| 3 | Temp. Mom. | Alloy | - - - |
| 4 | Porcelain Socket | Ceramics | - - - |
| 5 | Insulator | Barelite | - - - |
| 6 | (-) Terminal | Iron | Color plated |
| 7 | Washer | Iron | Zinc plated |
| 8 | (+) Terminal | Copper | Nickel plated |

Date Last Revised: 3-30-06

Available from Mouser Electronics
1-800-346-6873
www.mouser.com

KC-300075

161-2050