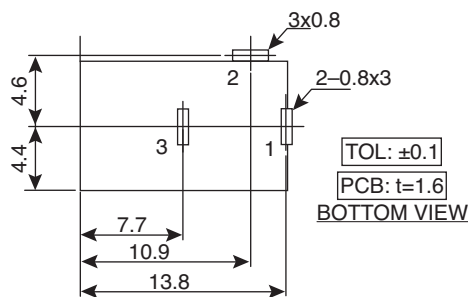
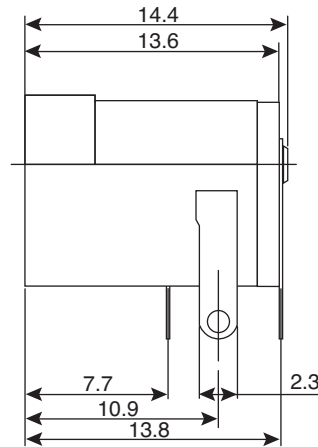
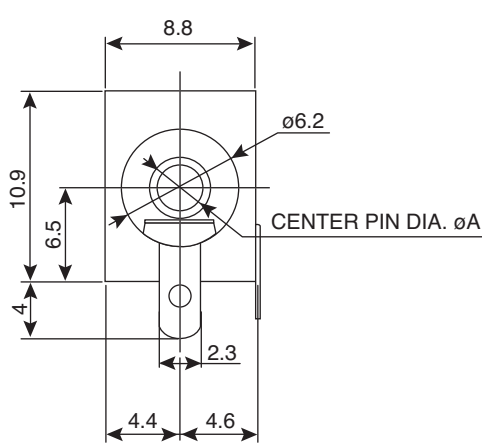


# PC Mount DC Power Jacks

163-7620-E, 163-7625-E

**KOBI**CONN

PC Mount DC Power Jacks



163-7625-E	$\phi 2.5^{+0.05}_{-0.1}$
163-7620-E	$\phi 2.0^{+0}_{-0.05}$
MODEL	CENTER PIN DIA. $\phi A$
SCHEMATIC	

Dimensions: mm

## SPECIFICATIONS

<b>Insulation Resistance:</b>	1000M $\Omega$ @ 500VDC
<b>Shunt Spring:</b>	Silver plated brass
<b>Tip Spring:</b>	Silver plated copper alloy
<b>Contact Resistance:</b>	30 $\Omega$ max.
<b>Insertion Force:</b>	0.3-1.5kg
<b>Extraction Force:</b>	0.3-1.5kg
<b>Voltage Test:</b>	500V for 1 minute
<b>Current Rating:</b>	1.5A @ 18VDC
<b>General Purpose:</b>	$\pm 0.08$
<b>Housing &amp; Back Cover:</b>	PBT
<b>Center Pin:</b>	Nickel plated
<b>Break, Pin, &amp; Sleeve Terminals:</b>	Silver plated
<b>Life Time:</b>	Withstand more than 5,000 cycles insertion and withdrawal with test plug
<b>RoHS Compliant</b>	

163-7620-E, 163-7625-E

Date Last Revised: 12/03/09

Available from Mouser Electronics  
1-800-346-6873 / [www.mouser.com](http://www.mouser.com)

KC-301286

Specifications are subject to change without notice. No liability or warranty implied by this information. Environmental compliance based on producer documentation.