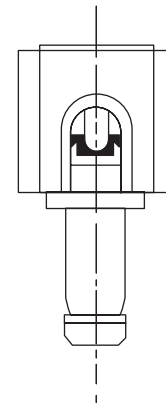
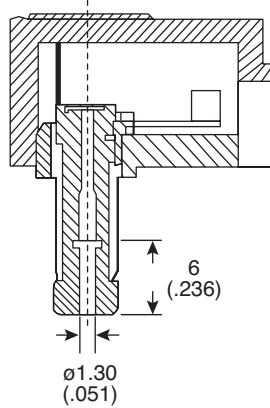
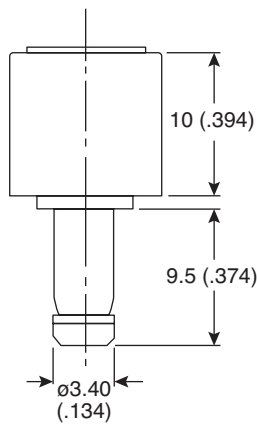
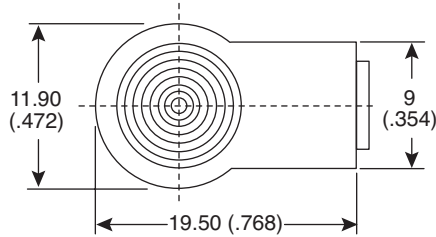
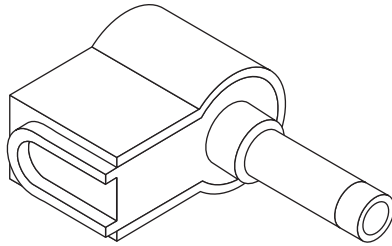


# DC Power Plug

171-3224-EX



DC Power Plug



Dimensions: mm (In)

SPECIFICATIONS	
Type:	Right Angle DC Power Solder Terminal
Color:	Black
Dielectric Strength:	500VAC for 1 Minute
Insulation Resistance:	100MΩ min. @ 500VDC
Contact Resistance:	50mΩ max.
Terminals, Sleeve, Contact:	Nickel Plated Brass
Insulator A:	Ebonite
Insulator B:	Polycarbonate
Insulator C:	Poly Acetal
Cap:	PVC
RoHS Compliant by Exemption	

Date Last Revised: 12-8-05

Available from Mouser Electronics  
1-800-346-6873  
www.mouser.com

KC-300900

171-3224-EX