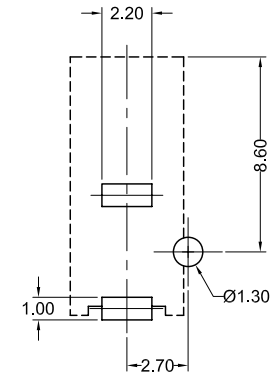
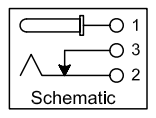
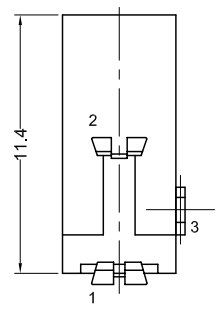


Material and Finish

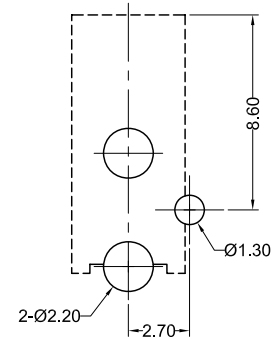
Body: PBT UL 94V-0 Rated
 Black Color
 Center Pin: Copper Alloy, Nickel Plated
 Pins 1 and 3: Brass, Tin Plated
 Pin 2: Phosphor Bronze, Tin Plated
 Insulator Material Color: Black

Electrical Characteristics

Contact Resistance
 Before Durability Test
 Between Terminals: 30 milliohms Max.
 Plug to Contacts: 50 milliohms Max.
 After Durability Test:
 Between Terminals: 60 milliohms Max.
 Plug to Contacts: 100 milliohms Max.
 Rated Voltage: 24V DC
 Rated Current: 2.5 amps
 Insulation Resistance: 100 Megohms Min.
 at 500V DC



Recommended PCB Layout
 (Bottom View)



Recommended PCB Layout
 Alternate
 (Bottom View)

Mechanical Characteristics

Durability Test: 5000 cycles
 Insertion Force: 0.3kg-2.0kg
 Extraction Force: 0.3kg-2.0kg
 Operating Temp: -25°C to +85°C

Part Number	Center Pin Diameter
KLDX-0201-AC	Ø1.00±0.05
KLDX-0201-BC	Ø1.30±0.05

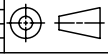


Tolerances
X.X ± 0.3
X.XX ± 0.15
Unless Stated Otherwise

REV.	DATE	DESCRIPTION	REV. BY	CHK. BY	DRAWN BY	DATE
A1	7/18/05	New Drawing	H. MA	C. Furumasa	H. MA	7/18/05
A2	01/31/11	ECO #11-010	S. Ven	H. MA		

KLDX-0201-xC

Mini DC Power Jack, ROHS Compliant
 1,0/1.3mm pin, Crimped Leads



UNITS
 mm