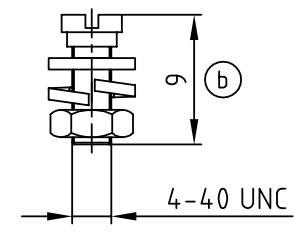
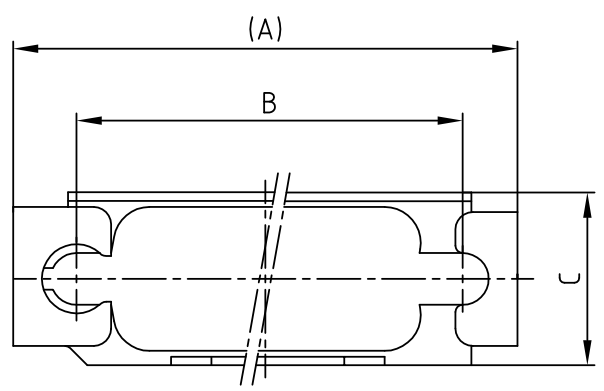
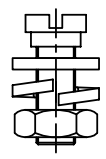
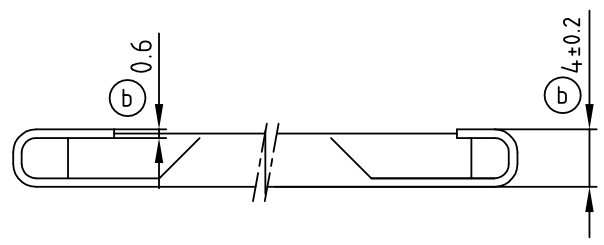


used for: D-SUB



No. of Pos.	(b) A	(b) B	(b) C	Part No.
9	35.0	27.4	12.0	160X10689X
15	43.3	35.7	11.5	160X10699X
25	57.0	49.4	12.0	160X10709X
37	74.4	65.9	12.0	160X10719X
50	72.0	63.5	15.0	160X10729X



A set consists of:
 1 frame
 2 screws UNC 4-40
 2 washers
 2 spring ring (b)
 2 nuts UNC 4-40

Material and plating:
 frame - stainless steel
 screws - steel; 5-7µ Zn thickfilm passivated
 washers - steel; 5-7µ Zn thickfilm passivated
 (b) spring ring - steel; 5-7µ Zn thickfilm passivated
 nuts - steel; 5-7µ Zn thickfilm passivated

THIS DRAWING MAY NOT BE COPIED OR REPRODUCED IN ANY WAY, AND MAY NOT BE PASSED ON TO A THIRD PARTY WITHOUT WRITTEN PERMISSION. OWNERSHIP AND COPYRIGHT OF CONEC GmbH DO NOT ALTER CAD DRAWING BY HAND	tolerance (b) DIN ISO 2768-m					scale: 2:1
	1995			date	name	title: Slide lock Typ 4 with locking bolt 9 - 50 pos.
	drawn			18.07.	Barcinski	
	appd.			18.07.	Mickenbecker	
	norm					
d-old					dwg no: AutoCAD/REL.10 16V11M6A	
9 x b	Ä 3055	16.07.2008	Sonne			DIN-A 4
a	Origin					sh: 1/1
rev.	description	date	name	part no: SEE TABLE		