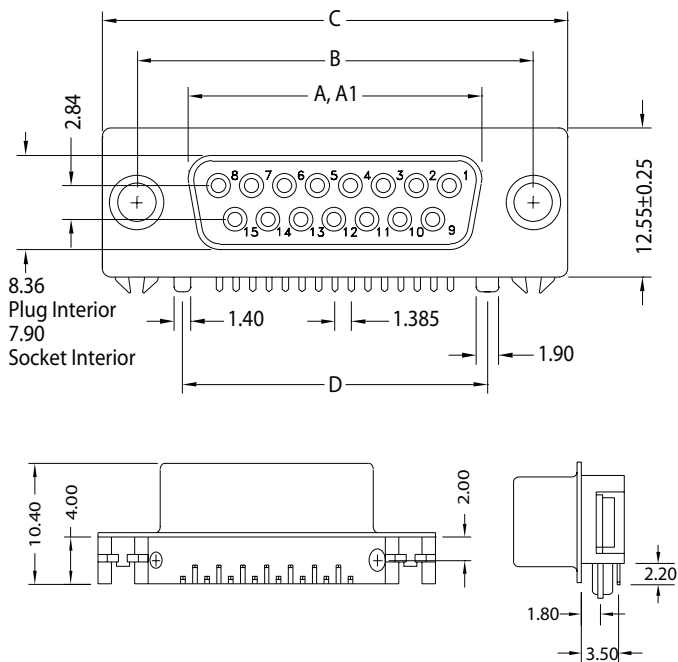


K31X / K31XHT Series
Right Angle PCB Mount Ultra Compact Footprint

Dimensions in mm



Shell Size	In mm				
	A	A1	B	C	D
9 (E)	±.010 ±0.25	±.010 ±0.25	±.005 ±0.13	±.015 ±0.38	±.005 ±0.13
15 (A)	.643 16.33	.666 16.92	.984 24.99	1.213 30.81	.551 14.00
25 (B)	1.511 38.38	—	1.852 47.04	2.088 53.04	1.557 39.54

A = Exterior of Female Shell (S) A1 = Interior of Male Shell (P)

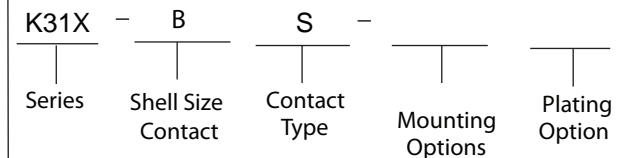
D-SUBMINIATURE CONNECTORS

K31X/K31XHT Series

Documentation & Ordering Information

Kycon Part #

Part Number Builder



Series

K31X - D-Subminiature Connector, Right Angle, PCB Termination, Ultra Compact Footprint

K31XHT - Reflow Compatible Version

Shell Size-Contact Option

- E - 9 Contacts
- A - 15 Contacts
- B - 25 Contacts
- E - 15 Contacts **High Density (Socket only)**

Contact Type

- P - Pin Contact (Plug) Available only with E9 Shell Size option
- S - Socket Contact (Receptacle)

Mounting Option

- N - With Board Locks and (4-40) Riveted Threaded Inserts
- NJ - With Board Locks, Riveted Threaded Inserts, and 4-40 Hex. Jack Screws Assembled to Connector

Plating Option

- Blank - Gold Flash
- 15 - 15µ" Gold
- 30 - 30µ" Gold

Contact Kycon for other Options