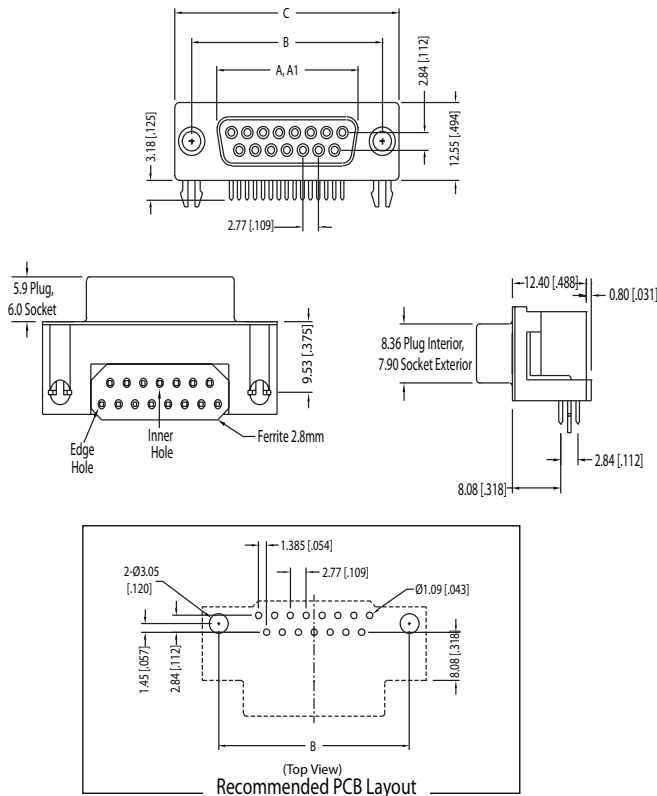


RoHS



KF22X Series Right Angle PCB Mount .318" Footprint with Ferrite

Pictured with Board Lock Option, Dimensions in mm [In]



Shell Size	In mm			
	A	AI	B	C
9 (E)	±.010 ±.025	±.010 ±.025	±.005 ±.013	±.015 ±.038
15 (A)	.643 16.33	.666 16.92	.984 24.99	1.213 30.81
25 (B)	.971 24.66	.994 25.25	1.312 33.32	1.541 39.14
37 (C)	1.511 38.38	1.534 38.96	1.852 47.04	2.088 53.04
	2.159 54.84	2.182 55.42	2.500 63.50	2.729 69.32

A = Exterior of Female Shell (S) A1 = Interior of Male Shell (P)

FERRITE D-SUBMINIATURE

KF22X Series

Documentation & Ordering Information

Kycon Part #

Part Number Builder

KF22X	-	B	S	-		
Series		Shell Size	Contact Type	PCB Mounting Options	Front Panel Mounting Options	Plating Option

Series

KF22X - D-Subminiature Connector, .318" Footprint with Ferrite

Shell Size-Contact Option

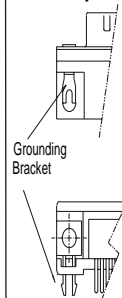
- E - 9 Contacts
- A - 15 Contacts
- B - 25 Contacts
- C - 37 Contacts

Contact Type

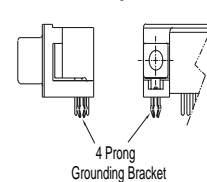
- P - Pin Contact (Plug)
- S - Socket Contact (Receptacle)

PC Board Mounting Option

N Option

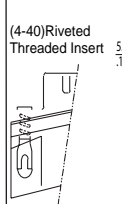


NV Option

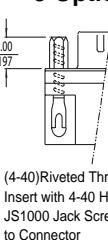


Front Panel Mounting Option

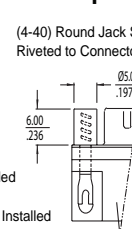
Standard



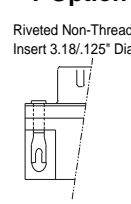
J Option



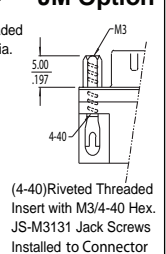
R Option



T Option



JM Option



Plating Option

- Blank - Gold Flash
- 15 - 15µ" Gold
- 30 - 30µ" Gold

Contact Kycon for other Options