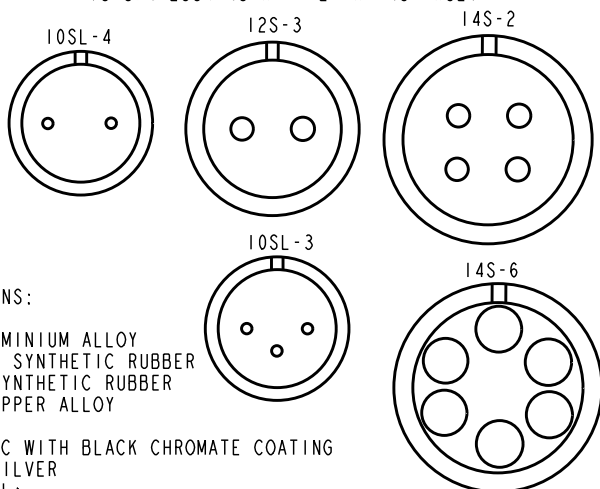


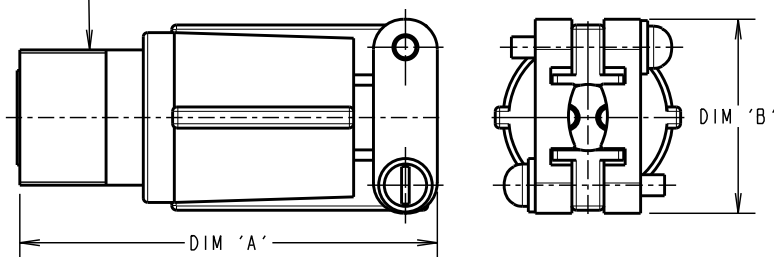
# Customer Information Sheet

DRAWING No.: C90-310IFXXSX-XX SHEET 2 OF 2 IF IN DOUBT - ASK © NOT TO SCALE THIRD ANGLE PROJECTION ALL DIMENSIONS IN mm

## CONTACT LAYOUT (SHOWN LOOKING AT THE MATING FACE)



'C' THREAD



### SPECIFICATIONS:

MATERIAL:  
SHELL: ALUMINIUM ALLOY  
INSULATOR: SYNTHETIC RUBBER  
GROMMET: SYNTHETIC RUBBER  
CONTACT COPPER ALLOY

FINISH:  
SHELL: ZINC WITH BLACK CHROMATE COATING  
CONTACT: SILVER

ENVIRONMENTAL:  
OPERATING TEMPERATURE: -55°C TO +125°C

MECHANICAL:  
VIBRATION SENSITIVITY: 10Hz TO 500Hz, 98mm/s<sup>2</sup> (10G)  
SHOCK SEVERITY: 490m/s<sup>2</sup> (50G) FOR 11ms  
WATER RESISTANCE (SEALING): 1.8m FOR 48HRS, EXCEEDS IP67

ELECTRICAL:  
CURRENT RATING: 13A  
VOLTAGE RATING: 10SL, 12S SHELL SIZES: 500V AC, 700V DC  
14S SHELL SIZE: 200V AC, 250V DC  
VOLTAGE PROOF: 10SL & 12S: 2,000V AC  
14S: 1,000V AC

INSULATION RESISTANCE: 5,000M $\Omega$  MIN.  
FOR MECHANICAL/ELECTRICAL REQUIREMENTS,  
SEE COMPONENT SPECIFICATION C045XX (LATEST ISSUE)

ORDER CODE: **C90-310IFXXXX-X X**

SHELL SIZE (CONTACT LAYOUT)  
10SL-3, 10SL-4, 12S-3, 14S-2  
14S-6

CONTACT GENDER \_\_\_\_\_  
P - MALE  
S - FEMALE

### NOTES:

1. PRODUCT IS RoHS COMPLIANT
2. PRODUCT IS PACKED IN BAGS.
3. RECOMMENDED WIRE SIZE 16-22 AWG

SHELL SIZE	DIM 'A' MAX	DIM 'B' MAX	'C' THREAD
10SL	54.10	22.76	5/8-24UNEF
12S	54.10	22.76	3/4-20UNEF
14S	55.91	25.94	7/8-20UNEF

RA	6	22.02.11	11153
NAME	ISS.	DATE	C/NOTE
APPROVED:		R. ADDE	
CHECKED:		M.G. PLESTED	
DRAWN:		R. ADDE	
CUSTOMER REF.:			
ASSEMBLY DRG:			

## HARWIN

HARWIN USA  
TEL: 603 893 5376  
FAX: 603 893 5396  
mis@harwin.com

HARWIN Europe (UK)  
TEL: 023 9231 4545  
FAX: 023 9231 4590  
mis@harwin.co.uk

HARWIN Asia  
TEL: +65 6 779 4909  
FAX: +65 6 779 3868  
mis@harwin.com.sg

THIS DRAWING AND ANY INFORMATION OR DESCRIPTIVE MATTER SET OUT HEREON ARE CONFIDENTIAL AND COPYRIGHT PROPERTY OF THE HARWIN GROUP AND MUST NOT BE DISCLOSED, LOANED, COPIED OR USED FOR MANUFACTURING, TENDERING OR FOR ANY OTHER PURPOSE WITHOUT THEIR WRITTEN PERMISSION.

TOLERANCES  
X. =  $\pm 1$ mm  
X.X =  $\pm 0.25$ mm  
X.XX =  $\pm 0.10$ mm  
X.XXX =  $\pm 0.01$ mm  
ANGLES =  $\pm 5^\circ$   
UNLESS STATED

MATERIAL: SEE ABOVE  
FINISH: SEE ABOVE  
S/AREA: mm<sup>2</sup>

TITLE: CABLE CONNECTOR  
DRAWING NUMBER: C90-310IFXXSX-XX  
SHT 2 OF 2