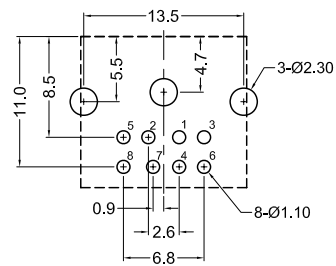
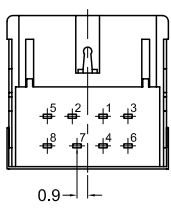
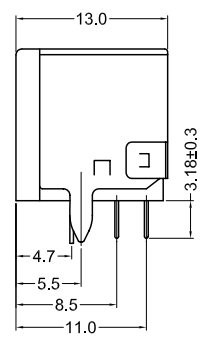


KMDGX-8S-AS
(8 position)



Recommended PCB Layout
(Bottom View)

Material and Finish

Body: PBT Thermoplastic,
UL94V-0 Rated, Black
Contacts: Copper Alloy
Gold Flash Plated on contact Area,
Tin on Termination,
all over Nickel Underplate
Shield: Brass, Nickel Plated

Electrical Characteristics

Contact Resistance:
Before Test:
Plug to Terminals: 30 Milliohms Max.
After Test:
Plug to Terminals: 60 Milliohms Max.
Insulation Resistance:
500 Megohms Min. at 500 VDC
Dielectric Withstanding Voltage:
500V AC RMS For 1 Minute
Current Rating:
2A at 12V DC

Mechanical Characteristics

Durability Test: 500 Cycles Min.
Insertion Force: 4.5kg max.
Extraction Force: 0.4kg - 3.5kg
Operating Temperature: -25°C to +85°C

KMDGX-3S-AS (3 position)	KMDGX-4S-AS (4 position)	KMDGX-5S-AS (5 position)	KMDGX-6S-AS (6 position)	KMDGX-7S-AS (7 position)

Recommended PCB Layouts (Bottom View)

RoHS COMPLIANT
EU Directive 2002/95/EC

Tolerances
X.X ± 0.25
X.XX ± 0.15
Unless Stated
Otherwise



REV.	DATE	DESCRIPTION	REV. BY	CHK. BY	DRAWN BY	DATE
B1	11/29/05	ECO #05-065	R. Aguirre	H. MA	H. MA	3/22/05
B2	12/7/05	ECO #05-068	H. MA	C. Furumasa		
C1	08/27/08	ECO #08-065	S. Vlen	H. MA		
C2	02/11/10	Release Drawing	S. Vlen	H. MA		
C3	09/23/10	ECO #10-064	S. Vlen	H. MA		
C4	03/18/11	ECO #11-020	S. Vlen	H. MA		

KMDGX-xS-AS

UNITS
mm

Circular Mini-DIN, Gold Flash Contacts, RoHS Compliant
4-Side Shield, Boardlock Center Ground Tab

