

## KMDGX Series Right Angle Mini-DIN

### Features

- PC99 Colors Available
- Shielded Options Available for Good Conductivity, Grounding and EMI/RFI Protection
- Mates with Standard and Snap and Lock Plugs
- Visual and Mechanical Polarization for Plug Insertion
- Reflow Compatible Design Available
- Gold plated contacts

### Performance Specifications

#### Materials and Finish

**Body** : PBT Thermoplastic, Black, Purple, Green or Yellow Color, UL94V-0 Rated

**Contacts** : Copper Alloy, Gold Plated

**Shield** : Brass, Nickel Plated

#### Mechanical Characteristics

**Insertion Force** : 4.5 kg max.

**Extraction Force** : 0.4 kg - 3.5 kg

**Durability** : 500 Cycles Minimum

#### Electrical Characteristics

**Contact Current Rating** : 2 Amp at 12V DC

**Insulation Resistance** : 500 Megohms Min at 500V DC

#### Contact Resistance

**Before Durability Test** : Plug to Terminals: 30 milliohms Max

**After Durability Test** : Plug to Terminals: 60 milliohms Max.

**Dielectric Withstanding Voltage** : 500V RMS AC for 1 Minute

**Operating Temperature** : -25°C to +85°C

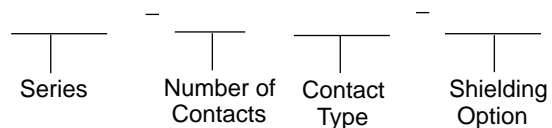
## MINI-DINs / CIRCULAR DINs

### KMDGX Series

#### Documentation & Ordering Information


Kycon Part #

#### Part Number Builder



#### Series

KMDGX - Right Angle PCB Mount Mini-DIN

#### Number of Contacts

3, 4, 5, 6, 7, 8, 9, ( 10 Available only with BS option )

#### Contact Type

S - Receptacle

#### Shielding Option

N - Non-Shielded

AS - Sides and Back Shielded

BS - Fully Shielded

#### Plating Option

Standard - Gold flash over nickel on contacts.

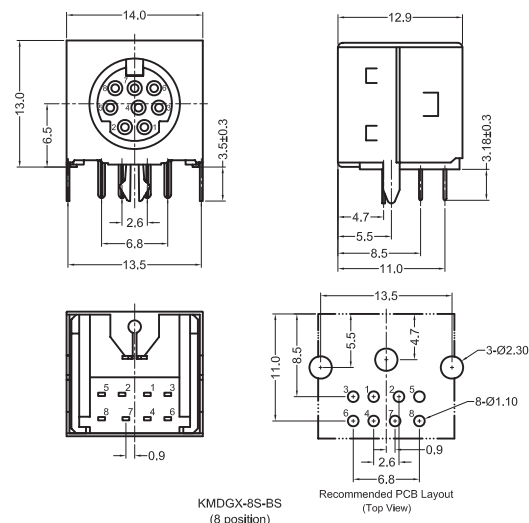
Tin overnickel on soldertails

Contact Kycon for PC99 Color Options, Minimum Order May Apply

### KMDGX Series Dimensions

Dimensions in mm

#### -BS Option (Fully Shielded)



KMDGX-BS-BS  
(8 position)

Recommended PCB Layout  
(Top View)