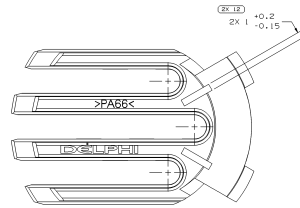
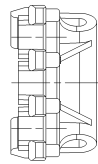
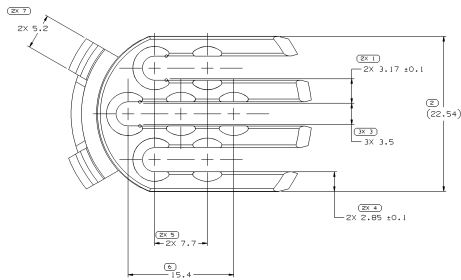


SYMBOL DEFINITION		MISSING SYMBOLS	
A DIMENSION WITHOUT AN INSPECTION REPORT SYMBOL (I) DOES NOT REQUIRE INSPECTION. IT MAY BE CONTROLLED ON THE INDIVIDUAL COMPONENT DRAWING.	TOTAL NO. OF INSPECTIONS REQUIRED	NO. MISSING SYMBOL NUMBER	NO. MISSING SYMBOL NUMBER
	19		
	LAST NO. USED		
	12		

REVISION HISTORY				DATE	BY	CHKD BY	APPROVED BY
1				21/07/04	BY	RC	TM
2				25/07/13	LAB	ME	
REVISION 11 NO. MAT'L SPEC WAS R0003705							
DIM. 1 WAS CHANGED TO FRONT VIEW, DIM. 2 WAS CHANGED TO FRONT VIEW, DIM. 3 WAS CHANGED TO FRONT VIEW, DIM. 4 WAS CHANGED TO FRONT VIEW.							



- NOTES
- UNLESS OTHERWISE SPECIFIED AND/OR INDICATED, DIMENSIONS ARE TO FACE OF VIEW SHOWN AND AUTOMATICALLY ROUNDED BY COMPUTERS FOR INSPECTION (SEE MATH MODEL FOR PRECISE DIMENSIONS). FOR ALL OTHER DIMENSIONS NOT SHOWN BUT REQUIRED FOR TOOL BUILD, SEE MATH MODEL FOR PRECISE TOOL PATH DATA.
 - THIS PART IS NOT CONTROLLED FOR AUTOMATIC FEEDING.
 - MATING COMPONENTS OR EQUIVALENT: CONNECTOR 1211075D 4 (12110753)
 - MATERIAL RECYCLING CODE 3PAB66 PER SAE J1344. (2, 3, 1X(10, 1)) RAISED CHARACTERISTICS TO BE LOCATED ON ANY EXTERIOR SURFACE. OPTIONAL CONSTRUCTION TO BE NO MATERIAL RECYCLING CODE.
 - (2, 3, 1X(10, 1)) RAISED DELPHI CORPORATE BRAND TO BE LOCATED ON ANY EXTERIOR SURFACE, PREFERABLY VISIBLE AT FINAL ASSEMBLY. OPTIONAL CONSTRUCTION TO BE "RED" OR NO LOGO.

DELPHI DELPHI PACKAGING ELECTRIC SYSTEM WARRICK, IN		DATE	07/21/04
DESIGNED BY	T. DALY	DATE	07/21/04
DRAWN BY	CONRAD	DATE	07/21/04
CHECKED BY	CONRAD	DATE	07/21/04
APPROVED BY	CONRAD	DATE	07/21/04
PART NAME: LOCK TPA M/P 330 7 GRA LT			
PART NUMBER: 12110754			
SIZE	SCALE	PROJ. TO	DATE
A0	1:1	1	07/21/04