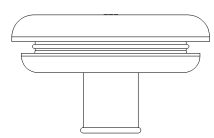
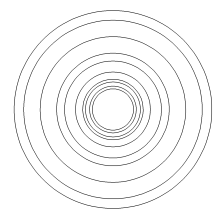
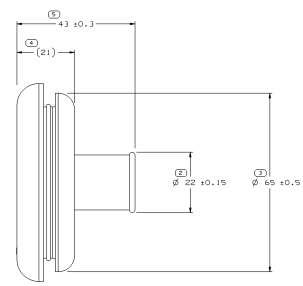
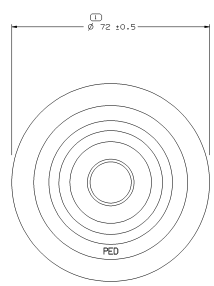
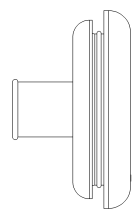
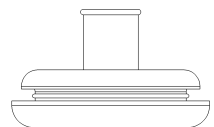
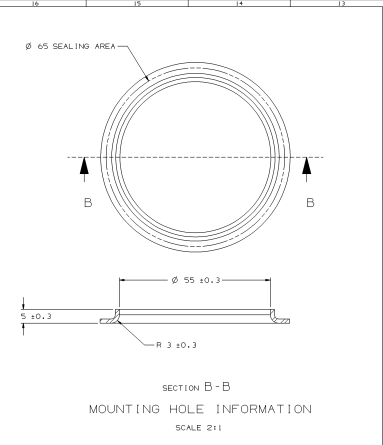
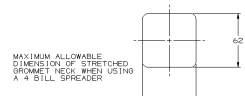


SYMBOL DEFINITION		MISSING SYMBOLS		REV. HISTORY		DATE	BY	CHK	REVISION HISTORY	DATE	BY	CHK
A DIMENSION WITHOUT AN INSPECTION REPORT SYMBOL (M) DOES NOT REQUIRE INSPECTION. IT MAY BE CONTROLLED ON THE INDIVIDUAL COMPONENT DRAWING.	TOTAL NO. OF INSPECTIONS REQUIRED	NO. MISSING SYMBOL NUMBER	DATE	DESCRIPTION	DATE	BY	CHK	CLEARED REV COLUMN & RETURNED TO PD	24452	ROB	JK	
	5											
	LAST USED											
	5											



- NOTES:
- UNLESS OTHERWISE SPECIFIED AND/OR INDICATED: DIMENSIONS ARE TO FACE OF VIEW SHOWN AND AUTOMATICALLY ROUNDED BY COMPUTER FOR INSPECTION. USE MATH MODEL FOR PRECISE DIMENSION. FOR ALL OTHER DIMENSIONS NOT SHOWN BUT REQUIRED FOR TOOL BUILD, SEE MATH MODEL FOR PRECISE TOOL PATH DATA.
 - THIS GROMMET TO BE USED WITH HARNESS BUNDLE SMOOTH TAPE WRAPPED USING 5 MIL TAPE HAVING NO SLITS ON EDGES.
 - PART IS SYMMETRICAL ABOUT CENTERLINE, EXCEPT AS NOTED.
 - REFERENCE SUMITOMO PART NUMBER 8201 9-01070.
 - THIS PART IS NOT CONTROLLED FOR AUTOMATIC FEEDING.
 - (2.31XIS.1) DELPHI CORPORATE BRAND TO BE LOCATED ON ANY EXTERIOR SURFACE, PREFERABLY VISIBLE AT FINAL ASSEMBLY. OPTIONAL CONSTRUCTION TO BE "PED".



DELPHI GLOBAL POWERTRAIN ELECTRIC SYSTEMS BAWD, OH	
DATE: 01/20/15 PART: 12066591 PART NAME: GROM TAPES DRAWN BY: JON BALEWITZ CHECKED BY: JON BALEWITZ APPROVED BY: JON BALEWITZ DATE: 01/20/15	PART NUMBER: 12045255 PREPARED BY: JON BALEWITZ CHECKED BY: JON BALEWITZ DATE: 01/20/15 SCALE: 1:1 USE MATH MODEL
OPERATOR NAME: GROM TAPES ON	OPERATOR NUMBER: 12066591
SIZE: 11 SCALE: 1:1 SHEET NO: 1 OF 1	PART NO: 12066591 REV: 1 OF 1