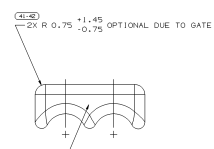
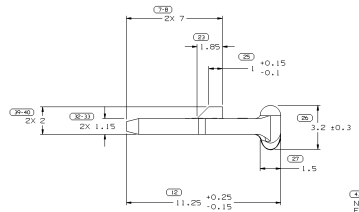
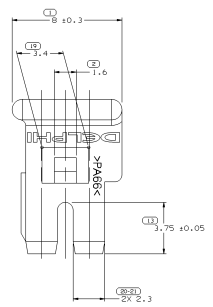
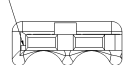


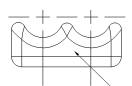
SYMBOL DEFINITION		MISSING NUMBERS		REV. SYMBOL		REVISION HISTORY		DATE	BY	CHK	APP
A DIMENSION WITHOUT TOTAL SYMBOLS DOES NOT REQUIRE INSPECTION, IT MAY BE CONTROLLED ON AN INDIVIDUAL COMPONENT DRAWING.	TOTAL SYMBOLS DRAWING LAST NO. USED	2145, 2111, 14-18, 22, 54, 28-31, 34-35	17	DATE	SYMBOL	NO.	DESCRIPTION	DATE	BY	CHK	APP
			45	12400	R 05	-	-	22/05/15	MM	MM	MM
				12401	R 06	-	-	24/01/15	MM	MM	MM
				040003	R 07	-	-	24/06/15	MM	MM	MM



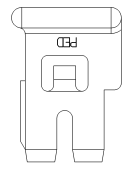
(11) RIB CAN BE VERTICALLY POSITIONED ANYWHERE ALONG THE 1.15 THICKNESS OF TPA FINISH.



(12) NO DATES PROTRUSIONS OR SHARP EDGES ALLOWED ON THIS SURFACE.



(13) ANY DATES ON THIS SURFACE MUST NOT EXCEED HEIGHT OF 0.1 MM AND MUST BE SOFT TO THE OPERATOR CONTACT AND SHARP EDGES OR POINTS ALLOWED!



OPTIONAL CONSTRUCTION

NOTES

- UNLESS OTHERWISE SPECIFIED AND/OR INDICATED, DIMENSIONS ARE TO FACE OF VIEW SHOWN AND AUTOMATICALLY ROUNDED BY COMPUTER FOR INSPECTION (SEE MATH MODEL FOR PRECISE DIMENSIONS). FOR ALL OTHER DIMENSIONS NOT SHOWN BUT REQUIRED FOR TOOL BUILD, SEE MATH MODEL FOR PRECISE TOOL PATH DATA.
- THIS PART IS NOT CONTROLLED FOR AUTOMATIC FEEDING.
- MATERIAL RECYCLING CODE SPARKS PER SHE. (1, 344, 12, 31)(10, 1) RAISED CHARACTERS AS SHOWN TO BE LOCATED ON ANY EXTERIOR SURFACE. OPTIONAL CONSTRUCTION TO BE NO MATERIAL RECYCLING CODE.
- MATING COMPONENTS OR EQUIVALENT: CONNECTOR 12047622, 12047785
- (2, 31)(10, 1) RAISED DELPHI CORPORATE BRAND TO BE LOCATED ON ANY EXTERIOR SURFACE, PREFERABLY VISIBLE AT FINAL ASSEMBLY. OPTIONAL CONSTRUCTION TO BE "TSD" OR NO LOGO.



PART DRAWING	
DATE	15/05/15
FILE NO.	0-0000
DATE TIME	15/05/15 10:00:00
USER	MM
GROUP	0-0000
WALL STRAIGHTENING	0-0000

**DELPHI**  
DELPHI PACKAGING ELECTRIC SYSTEM  
WINDMILL

LOCK TPA M/P 150 2 GRA LT

15324070

DATE: 2015.05.15 TIME: 10:00:00

0.2 MAX	0.1 MAX	0.15 MAX	0.2 MAX	0.25 MAX	0.3 MAX	0.4 MAX	0.5 MAX	0.6 MAX	0.8 MAX	1.0 MAX	1.5 MAX	2.0 MAX	3.0 MAX	4.0 MAX	5.0 MAX	6.0 MAX	8.0 MAX	10.0 MAX	15.0 MAX	20.0 MAX	30.0 MAX	40.0 MAX	50.0 MAX	60.0 MAX	80.0 MAX	100.0 MAX
---------	---------	----------	---------	----------	---------	---------	---------	---------	---------	---------	---------	---------	---------	---------	---------	---------	---------	----------	----------	----------	----------	----------	----------	----------	----------	-----------

PROBES IDENTIFICATION	PROBES	PROBES	PROBES	PROBES	PROBES	PROBES	PROBES	PROBES	PROBES	PROBES	PROBES	PROBES	PROBES	PROBES	PROBES	PROBES	PROBES	PROBES	PROBES	PROBES	PROBES	PROBES	PROBES	PROBES	PROBES	PROBES	PROBES
-----------------------	--------	--------	--------	--------	--------	--------	--------	--------	--------	--------	--------	--------	--------	--------	--------	--------	--------	--------	--------	--------	--------	--------	--------	--------	--------	--------	--------