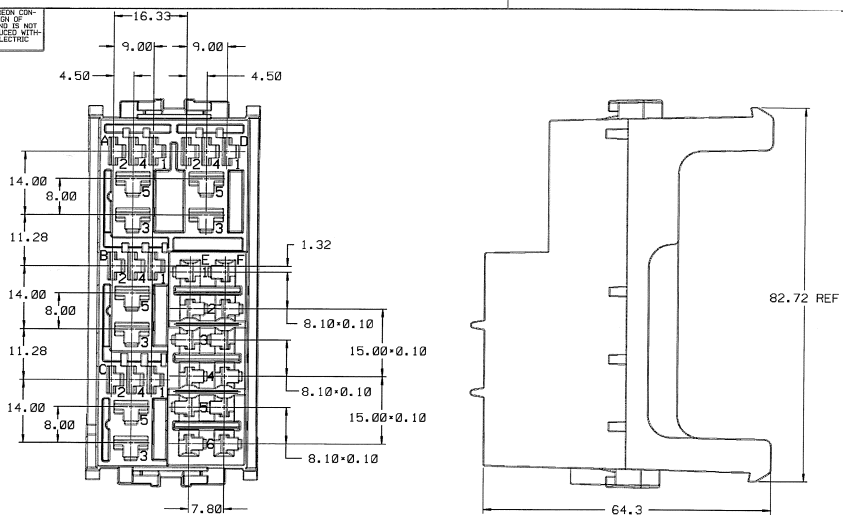


THIS DRAWING AND DESIGN HEREON CONSTITUTE A PROPRIETARY DESIGN OF PACKARD ELECTRIC DIVISION AND IS NOT TO BE REPLICATED OR REPRODUCED WITH OUT AUTHORITY OF PACKARD ELECTRIC DIVISION.

PACKARD ELECTRIC DIVISION
GENERAL MOTORS CORPORATION



NOTES

1. DIMENSIONS ARE TO FACE OF VIEW UNLESS OTHERWISE INDICATED.
2. CAVITIES A3,A5,B3,B5,C3,C5,D3,& D5 ARE IDENTICAL, EXCEPT AS SHOWN, AND ACCEPT 12015869 TERMINAL OR EQUIVALENT. MAX. INSULATION CRIMP MUST BE LESS THAN 5.65 HIGH AND 7.50 WIDE.
3. CAVITIES A1,A2,A4,B1,B2,B4,C1,C2,C4,D1,D2,&D4 ARE IDENTICAL, EXCEPT AS SHOWN, AND ACCEPT 12065892 TERMINAL OR EQUIVALENT. MAX. INSULATION CRIMP MUST BE LESS THAN 4.75 HIGH AND 4.00 WIDE.
4. CAVITIES E1,E3,E5,F1,F3,&F5 ARE IDENTICAL, EXCEPT AS SHOWN, AND ACCEPT 12092556 TERMINAL OR EQUIVALENT. MAX. INSULATION CRIMP MUST BE LESS THAN 6.30 HIGH AND 5.55 WIDE.
5. CAVITIES E2,E4,E6,F2,F4,&F6 ARE IDENTICAL, EXCEPT AS SHOWN, AND ACCEPT 12092525 TERMINAL BUS BAR OR EQUIVALENT. MAX. INSULATION CRIMP MUST BE LESS THAN 6.30 HIGH AND 5.55 WIDE.
6. THIS PART ACCEPTS 12110595 COMB OR EQUIVALENT.
7. THIS PART ACCEPTS 12110602 COVER OR EQUIVALENT.
8. THIS PART ACCEPTS 12077530 COVER CLIP OR EQUIVALENT, 2 REQ'D.
9. THIS PART MATES WITH 12084910 MOUNTING BASE OR EQUIVALENT.
10. PLATED TERMINALS ARE REQUIRED TO ENSURE ADEQUATE RELAY RETENTION IN ANY APPLICATION WHICH POSITIONS THE RELAYS FACING DOWN.
11. SEALING CODE 0.
12. DIMENSIONS MARKED "REF" ARE FOR REFERENCE ONLY, AND NO TOLERANCE LIMITS ARE ESTABLISHED.
13. MATERIAL RECYCLING CODE PER ISO 11469. (2,3) X (0,1) RAISED CHARACTERS AS SHOWN TO BE LOCATED ON ANY EXTERIOR SURFACE. OPTIONAL CONSTRUCTION TO BE NO MATERIAL RECYCLING CODE.
14. (2,3) X (0,1) RAISED DELPHI CORPORATE BRAND TO BE LOCATED ON ANY EXTERIOR SURFACE, PREFERABLY VISIBLE AT FINAL ASSEMBLY. OPTIONAL CONSTRUCTION TO BE "PED" OR NO LOGO.

DATE	BY	REVISION RECORD	AUTHORITY	DR	CK
140E90	B	RELEASED	900205	SPM	EPW
18J91	C	MOVED INDEXING FEATURE	139865	SPM	EPW
020E91	D	ADDED 15.00*0.10, REMOVED 30.00*0.10 AND RELOCATED 15.00*0.10	146892	BKD	BKD
27MR00	DY	UPDATED MAT'L SPEC & ADDED DELPHI LOGO & RECYCLING			
		CODE NOTES	279007	FMG	JAA

PED / MICROGRAPH		FILE	*****
MICROSTATION		SPEC	*****
THIRD ANGLE PROJECTION		METRIC	
		DIMENSIONS ARE IN MILLIMETERS UNLESS OTHERWISE SPECIFIED.	
DOC. NO.	6900	TOLERANCE UNLESS OTHERWISE SPECIFIED	ANGULAR ±°
DWG. DATE	21 JUN 90	ONE PLACE ± 0.3	TWO PLACES ± 0.15
EST. NO.		DR. BRIAN MADISON	DATE 130E90
REFERENCE NO.	12110594 "R" SIZE	APPR. JOSEPH LYTLE	DATE 11J91
MATERIAL SPEC.	M2279001 PA66 GF14 HS IM BLK	APPR. R.A. PETROSKY	DATE 11J91
NAME	CONVENIENCE CTR		
PART NO.	1211 0594	SIZE	C
	OUTLINE DRAWING		

PACKARD ELECTRIC