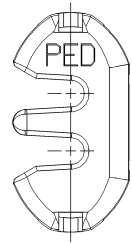
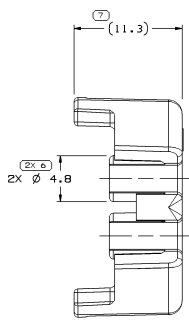
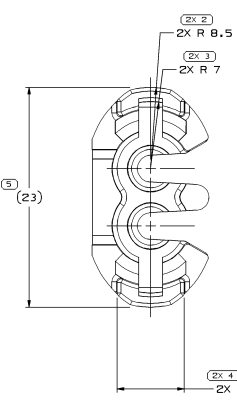
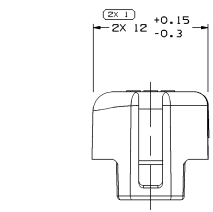


SYMBOL DEFINITION		MISSING SYMBOLS	
A DIMENSION WITHOUT AN INSPECTION REPORT SYMBOL () DOES NOT REQUIRE INSPECTION. IT MAY BE CONTROLLED ON THE INDIVIDUAL COMPONENT DRAWING.	TOTAL NO OF INSPECTIONS REQUIRED	NO MISSING SYMBOL NUMBER	
	12		
	LAST NO. USED		
	7		

REV STATUS				REVISION HISTORY				AUTH	
DATE	STG	REV	N/P	CHK	230E				
18NO1	R	01	-	-	-	ALL PARTS - UPDATED PDM ATTRIBUTES	2109563	EGR	EAR
07DEC1	R	02	-	-	-	12077756 - UPDATED PDM ATTRIBUTES	215063	MM	MM
19MY04	R	03	-	-	-	15496842 - RELEASED	255176	QPS	FRO
04AP06	R	04	-	-	-	15324327 - OBSOLETE	278839	CC	FRO
10AP07	R	05	-	-	-	13642557 - RELEASED	401103	GL	JVM



NOTES

- UNLESS OTHERWISE SPECIFIED AND/OR INDICATED: DIMENSIONS ARE TO FACE OF VIEW SHOWN AND AUTOMATICALLY ROUNDED BY COMPUTER FOR INSPECTION (SEE MATH MODEL FOR PRECISE DIMENSIONS). FOR ALL OTHER DIMENSIONS NOT SHOWN BUT REQUIRED FOR TOOL BUILD, SEE MATH MODEL FOR PRECISE TOOL PATH DATA.
- MATERIAL RECYCLING CODE PER ISO 11469. (2,3)X(10,11) CHARACTERS TO BE LOCATED ON ANY EXTERIOR SURFACE.
- THIS PART IS NOT CONTROLLED FOR AUTOMATIC FEEDING.
- REFERENCE MATING COMPONENTS OR EQUIVALENT: CONNECTOR TWO WAY 150 SERIES MALE & FEMALE PUSH-TO SEAT
- (2,3)X(10,11) DELPHI CORPORATE BRAND TO BE LOCATED ON ANY EXTERIOR SURFACE, PREFERABLY VISIBLE AT FINAL ASSEMBLY. OPTIONAL CONSTRUCTION TO BE "PED".
- MAX CABLE DIAMETER THAT WILL FIT PART IS Ø 2.8
- DUE TO HEAT REQUIREMENTS, THE MATERIAL SPECIFIED CANNOT BE CHANGED WITHOUT THE APPROVAL OF THE SUPERVISOR OF COMPONENT LIAISON OR HIS DELEGATE.



PART NO	REV	N/P	STATUS	MATERIAL SPECIFICATION AND COLOR	VOL	CM³
13642557	01	-	-	M3592015 PA66 HS IM GRN LT	0,931	
15496842	01	-	-	M3592004 PA66 HS IM-RED	0,931	
15324327	02	AA	OBSOLETE	M3586001 PA46 HS IM-NAT	0,931	
12124790	02	-	-	M3592025 PA66 HS IM-GFA MD	0,931	
12077755	07	-	-	M3592001 PA66 HS IM-BLK	0,931	
12052634	08	AA	-	M3592008 PA66 HS IM-BLU	0,931	

DIMENSIONAL RANGE (MM)		CHECK ET	
FROM	> 0	> 20	> 30
TO	20	30	40
DIMENSIONAL TOLERANCE SPECIFIED		0.1	0.2
DIMENSIONAL TOLERANCE SPECIFIED		0.1	0.2

PROJ TYPE: PART DRAWING

STYLE: SEE CHART

OTHER CODE: D

UNLESS OTHERWISE SPECIFIED:

THIS DOCUMENT IS IN ACCORDANCE WITH THE ISO 15026-1 TO 15026-5 STANDARDS. DIMENSIONS OF FEATURES MAY BE SHOWN SEPARATELY FROM THE PART REFERENCE.

ALL DIMENSIONS ARE IN MILLIMETERS

REFERENCE:

THIRD ANGLE PROJECTION

DO NOT SCALE

USE MATH DATA

DELPHI

DELPHI PACKARD ELECTRICAL/ELECTRONIC ARCHITECTURE WARREN, OH

DR	DATE
APPR M. PADILLA	2606098
APPR C. MIRANDA	2606098
APPR G. MIRANDA	2606098

SUBSTANCES OF CONCERN AND RECYCLED CONTENTS PER DELPHI (05/05/00)

DELPHI TAXI LOCK SECONDARY TPA M/P

DRAWING NUMBER: 12077756

SIZE: A1

SCALE: 5:1

SHEET NO: 1 OF 1

REV: 05