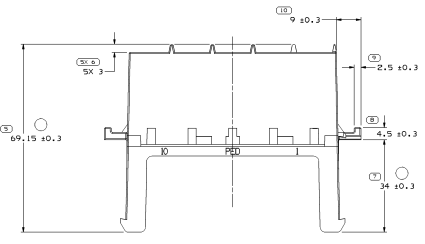
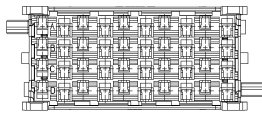
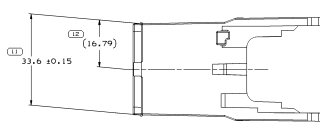
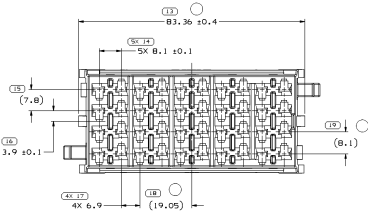
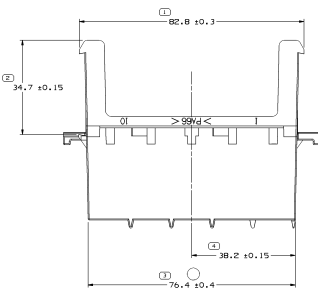
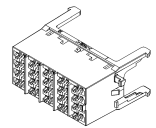


SYMBOL DEFINITION		MISSING SYMBOLS		DESIGN		REVISION HISTORY		DATE	
A DIMENSION WITHOUT AN INSPECTION REPORT SYMBOL ( ) DOES NOT REQUIRE INSPECTION. IT MAY BE CONTROLLED ON THE INDIVIDUAL COMPONENT DRAWING.	TOTAL NO OF INSPECTIONS REQUIRED	NO. MISSING SYMBOL NUMBER	30	DATE	BY	CHK			
	LAST NO. USED		19						



- NOTES
- UNLESS OTHERWISE SPECIFIED AND/OR INDICATED:  
DIMENSIONS ARE TO FACE OF VIEW SHOWN AND AUTOMATICALLY ROUNDED BY COMPUTER FOR INSPECTION. (SEE MATH MODEL FOR PRECISE DIMENSIONS) LIKE CAVITIES ARE IDENTICAL LIKE FEATURES ARE IDENTICAL
  - REFERENCE MATING COMPONENTS OR EQUIVALENT:  
TERMINALS: 1202256 ROWS A, B, C & D  
CAVITIES: 1-1, 2, 5, 7 & 9  
1202256 BUS BAR ROWS A, B, C & D  
CAVITIES: 1-2, 4, 5, 8 & 10  
MOUNTING BASE: 1211004
  - THIS PART IS NOT CONTROLLED FOR AUTOMATIC FEEDING.
  - MATERIAL RECYCLING CODE PER ISO 11469, 131X10, 11 RAISED CHARACTERS AS SHOWN TO BE LOCATED ON ANY EXTERIOR SURFACE. OPTIONAL CONSTRUCTION TO BE NO MATERIAL RECYCLING CODE.
  - 12\_31X10\_11 RAISED DELPHI CORPORATE BRAND TO BE LOCATED ON ANY EXTERIOR SURFACE. PREFERABLY VISIBLE AT FINAL ASSEMBLY. OPTIONAL CONSTRUCTION TO BE "PED" OR "NO LOGO".



DELPHI DELPHI POWER ELECTRIC SYSTEM PART NO.		PART DRAWING TITLE: 47.693		DATE: 11/11/00	
ALL DIMENSIONS ARE IN MILLIMETERS		UNLESS OTHERWISE SPECIFIED: DIMENSIONS ARE TO UNLESS OTHERWISE SPECIFIED DIMENSIONS ARE TO UNLESS OTHERWISE SPECIFIED		DIMENSIONS IN PARENTHESES ARE RECOMMENDED DIMENSIONS IN PARENTHESES ARE RECOMMENDED	
(CAL) PROCESS SPECIFIC SYMBOLS		THIRD ANGLE PROJECTION		ISO 9001 CERTIFIED	
PREVIOUS EDITIONS ARE OBSOLETE PREVIOUS EDITIONS ARE OBSOLETE		THIS DRAWING IS THE PROPERTY OF DELPHI THIS DRAWING IS THE PROPERTY OF DELPHI		ALL RIGHTS RESERVED	
DELPHI		PART NO. 12191544		PRINTED IN MEXICO	