

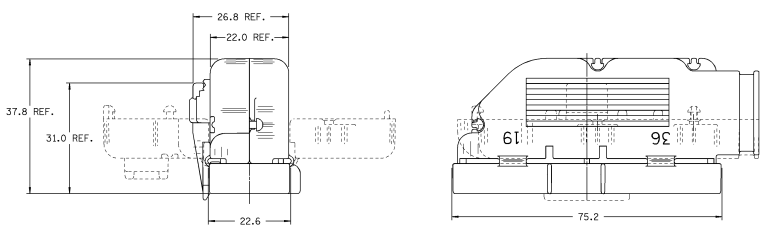
DATE DRAWING REVISION DESIGN COM-
PLETE FOR APPROVAL DESIGN OF
PROPOSED LISTED TO ORDER AND TO PART
FOR PURCHASE OF PACKARD ELECTRIC
DIVISION

PART NO.
1211 0490

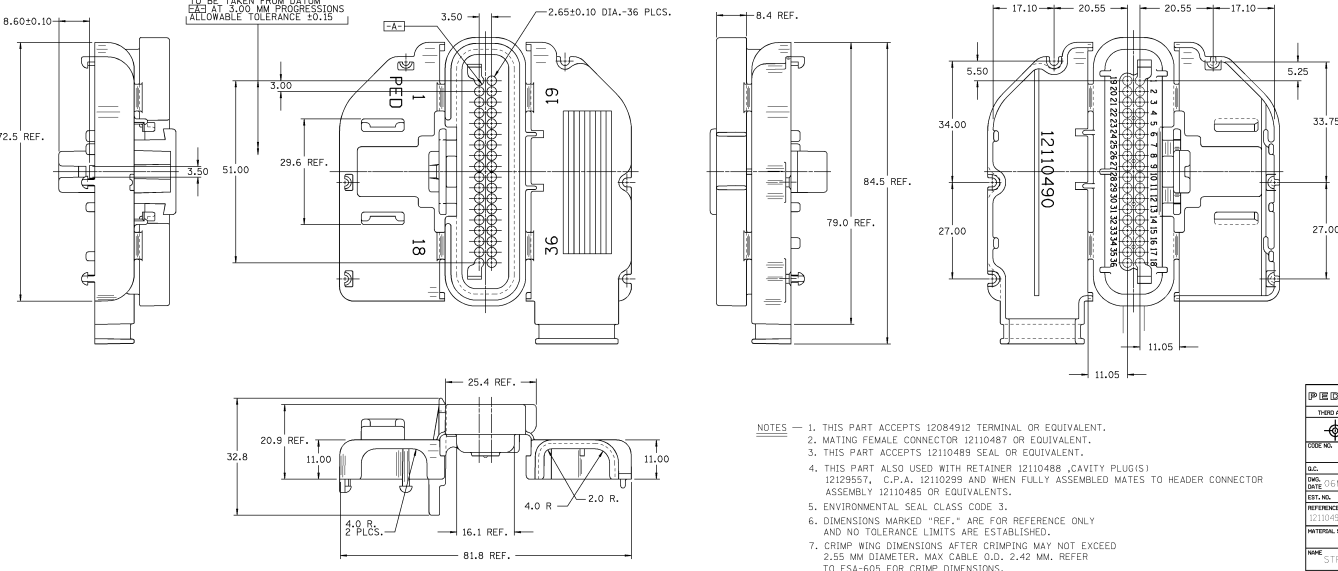
PART NO.
1211 0490

DATE	BY	REVISION RECORD	AUTHORITY	CHK
196909	C	WAS PROPOSED & RELEASED	900005	J. C.
196909	D	REVISED GRAPHICS & DIMENSIONS	190246	J. Z.
040261	L	ADDED TWO STRESS RELIEF FEATURES		
040291	F	4.0 MMT SIDE MACHINING	140536	J.P.P.
050291	G	ADDED BUMPS - 4 PLCS	144838	J.P.P.
060791	H	MATERIAL SPEC WAS HYTREL 90W - BLACK	144864	R.D.H.
060891	J	ADDED CVA QUOTE NOTES AND REVISED	140735	R.H.H.
051492	K	REVISED	150038	DAR/DAR
090393	M	REVISED NOTES	157807	M.H.H.

PACKARD ELECTRIC DIVISION
GENERAL MANUFACTURING DEPARTMENT



STRAIN RELIEF SHOWN
IN ASSEMBLED POSITION



CENTER LINE MEASUREMENTS
TO BE TAKEN FROM D.A.T.M.
E.D. AT 1.00 MM PROGRESSIONS
ALLOWABLE TOLERANCE ±0.15

- NOTES —
1. THIS PART ACCEPTS 12084912 TERMINAL OR EQUIVALENT.
 2. MATING FEMALE CONNECTOR 12110487 OR EQUIVALENT.
 3. THIS PART ACCEPTS 12110489 SEAL OR EQUIVALENT.
 4. THIS PART ALSO USED WITH RETAINER 12110488, CAVITY PLUG(S) 12129557, C.P.A. 12110299 AND WHEN FULLY ASSEMBLED MATES TO HEADER CONNECTOR ASSEMBLY 12110485 OR EQUIVALENTS.
 5. ENVIRONMENTAL SEAL CLASS CODE 3.
 6. DIMENSIONS MARKED "REF." ARE FOR REFERENCE ONLY AND NO TOLERANCE LIMITS ARE ESTABLISHED.
 7. CRIMP WING DIMENSIONS AFTER CRIMPING MAY NOT EXCEED 2.55 MM DIAMETER. MAX CABLE O.D. 2.42 MM. REFER TO ESA-605 FOR CRIMP DIMENSIONS.

IP (E) ID / METRIC	FILE SPECIFICATION CONNECTION POINTS	FILE SPECIFICATION REVISIONS
THIRD ANGLE PROJECTION	METRIC	
CONVERSIONS ARE IN MILLIMETERS UNLESS OTHERWISE SPECIFIED		
CODE NO. 6900	TO FINISH UNLESS OTHERWISE SPECIFIED	ANGLE ± °
QTY.	DR. NUMBER	DATE (MM/DD)
DATE 06/09/90	SCALE 1:1	DATE (MM/DD)
EST. NO.	APPR. (TITLE) RELEASER	DATE (MM/DD)
REFERENCE NO.	APPR. (TITLE) PROJECTOR	DATE (MM/DD)
INTERNAL SPEC	HYTREL - GRAY	
NAME STRAIN RLF 36F MIC/P 100W RH 90DEC		
PART NO. 1211 0490	SIZE D	
OUTLINE DRAWING		

PACKARD ELECTRIC