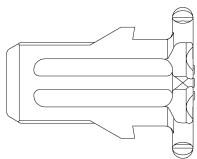
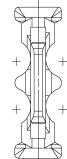
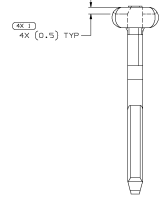
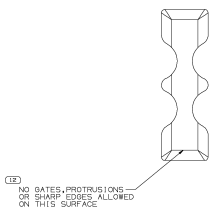
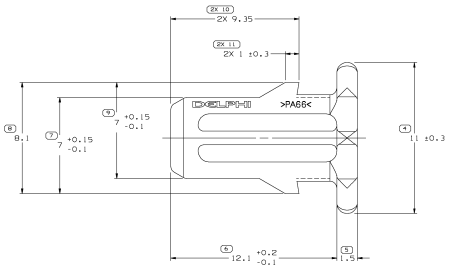
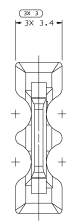
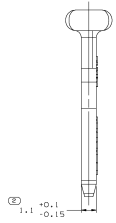


SYMBOL DEFINITION				MISSING SYMBOLS				REVISION HISTORY				APP'D	DATE
A DIMENSION WITHOUT AN INSPECTION REPORT SYMBOL () DOES NOT REQUIRE INSPECTION. IT MAY BE CONTROLLED ON THE INDIVIDUAL COMPONENT DRAWING.	TOTAL NO. OF INSPECTIONS REQUIRED	19	NO MISSING SYMBOL NUMBER	DATE	REV	APPROV	CHK	DESCRIPTION	DATE	BY	APP'D	DATE	BY
	LAST USED	12		14.0652	05	-	-	CLEANED PER 10.001.001. WITH SPEC. 485	2004.04		2204.04		
				14.0652	06	-	-	UPDATED PDM ATTRIBUTES			2204.13		



- NOTES
- UNLESS OTHERWISE SPECIFIED AND/OR INDICATED, DIMENSIONS ARE TO FACE OF VIEW SHOWN AND AUTOMATICALLY ROUNDED BY COMPUTER FOR INSPECTION (SEE MATH MODEL FOR PRECISE DIMENSIONS). FOR ALL OTHER DIMENSIONS NOT SHOWN BUT REQUIRED FOR TOOL BUILD, SEE MATH MODEL FOR PRECISE TOOL PATH DATA.
 - MATERIAL RECYCLING CODE: 394586 PER SAE J1344. 10.11X10.11 RAISED CHARACTERS AS SHOWN TO BE LOCATED ON ANY EXTERIOR SURFACE. OPTIONAL CONSTRUCTION TO BE NO MATERIAL RECYCLING CODE.
 - THIS PART IS NOT CONTROLLED FOR AUTOMATIC FEEDING.
 - MATING COMPONENTS OR EQUIVALENT: CONNECTOR 1204766.3
 - 10.411X10.11 RAISED DELPHI CORPORATE BRAND TO BE LOCATED ON ANY EXTERIOR SURFACE. PREFERABLY VISIBLE AT FINAL ASSEMBLY. OPTIONAL CONSTRUCTION TO BE "PND" OR NO LOGO.
 - PART IS SYMMETRICAL ABOUT ITS CENTERLINE.

VIEW SCALE DOES NOT REFLECT THE ACTUAL PART SIZE

OPTIONAL CONSTRUCTION
EJECTION FLAT

PART DRAWING	
DATE	02.09.02
DESIGNER	D
APP'D	6100
REVISIONS	

DELPHI
GLOBAL POWER ELECTRIC SYSTEMS
WINDLIP

DATE	02.09.02
DESIGNER	D
APP'D	6100
REVISIONS	

12047665

1 OF 1