

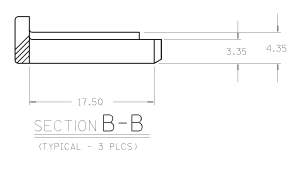
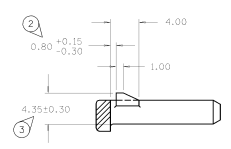
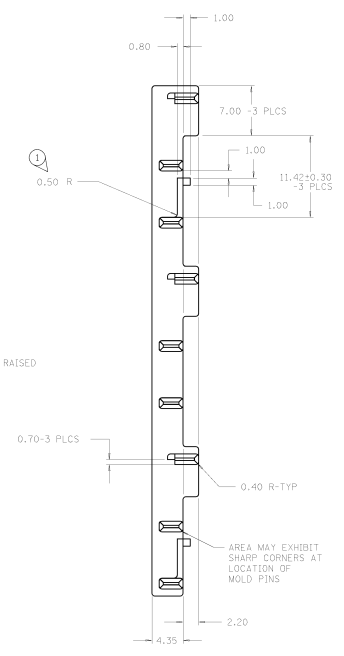
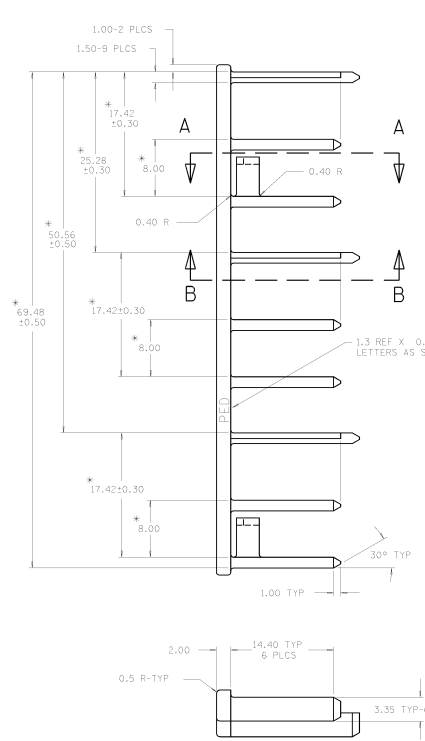
THIS DRAWING REPRESENTS THE DESIGN OF THE PART. IT IS THE RESPONSIBILITY OF THE USER TO VERIFY THE DIMENSIONS AND TOLERANCES OF THE PART AGAINST THE PACKARD ELECTRIC DIVISION SPECIFICATIONS.

DO NOT SCALE

PART NO. 1207 7572

PART NO. 1207 7572

PACKARD ELECTRIC DIVISION  
GENERAL MANUFACTURING DEPARTMENT



- NOTES
1. ALL RADII 0.40 UNLESS OTHERWISE SPECIFIED.
  2. DIMENSIONS ARE TO FACE OF VIEW SHOWN UNLESS OTHERWISE INDICATED.
  3. 1° DRAFT ON ALL SURFACES, UNLESS OTHERWISE SPECIFIED.
  4. THIS PART MATES WITH CONV CTR 12077571 OR EQUIVALENT.
  5. THIS PART IS NOT CONTROLLED FOR AUTOMATIC FEEDING.
  6. FOR POLYESTER IN-PROCESS MOISTURE AND PART DEGRADATION LIMITS SEE ESO-1502.
  7. LIKE FEATURES ARE IDENTICAL.
  8. + DIMENSIONS TO BE MEASURED AT BASE OF PART WITH BASE HELD IN FLAT, STRAIGHT POSITION.
- \* (C) DENOTES DIMENSIONS AND CHARACTERISTICS THAT ARE IMPORTANT TO THE FUNCTION AND/OR PROCESSING OF THE PART. IT DOES NOT NECESSARILY INDICATE AN SPC DIMENSION. THIS DRAWING HAS 3 SNOWCONES.

DATE	BY	REVISION RECORD	AUTHORITY	DR	CK
02APR88	A	PART NO. WAS PRELIMINARY & RELEASED	880005	DP	HL
27MAY88	B	REVISED LOCK FEATURES & MAT'L WAS			
		WAS 1.000 W/ 1.000 IN MATERIAL	880502	DP	HL
29FEB89	B1	REVISED DIMS TO PLCS AND ADDED "REF" IDENTIFY FTS			
25JAN96	B2	REVISED MAT'L WAS (207572)	86843	RLB	RLB

IP (E) ID / MTRACH	FILE	MANUFACTURE
THIRD ANGLE PROJECTION	SPEC	CONNECTIONS TO OTHER PARTS
		IDENTIFY PARTS
		<b>METRIC</b>
		DRAWINGS ARE IN MILLIMETERS UNLESS OTHERWISE SPECIFIED.
CODE NO. 6900	TRAFFIC LIGHTS	ANGULAR 2°
QC. 0-0007	TRAFFIC LIGHTS	
DATE (SFE88)	SCALE 1:1	
DR. (SFE88)	DATE	
CHK. (SFE88)	DATE	
APPR. (SFE88)	DATE	
INTERNAL SPEC. R010011 IMPACT MOD. POLYESTER (BLUE)		
NAME	COMB CONV CTR	
PART NO. 1207 7572		SIZE D

PACKARD ELECTRIC