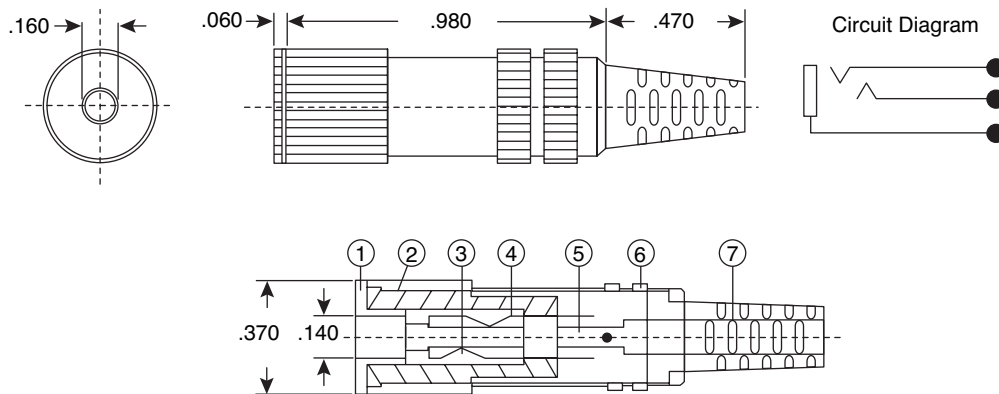
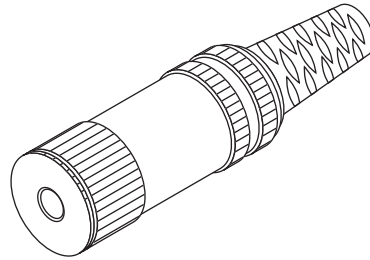


In-Line Stereo Jack

161-3300-EX



In-Line Stereo Jacks



Dimensions: In.

SPECIFICATIONS	
Type:	Hi-Rel, Shielded, In-Line Stereo
Breakdown Voltage:	500VAC for 1 Minute
Insulation Resistance:	100MΩ min. @ 500VDC
Contact Resistance:	50mΩ max.
Receptacle (1):	BSBM, Ni-P
Body (2):	PPO
Terminal (3):	PBS-EH, t=0.25, Au-P
Terminal (4):	PBS-EH, t=0.25, Ni-P
Terminal (5):	Steel, t=0.3, Ni-P
Cap (6):	BSBM, Ni-P
Strain Relief (7):	PVC, Black
RoHS Compliant by Exemption	

Date Last Revised: 12-2-05

Available from Mouser Electronics
1-800-346-6873
www.mouser.com

KC-300831

161-3300-EX