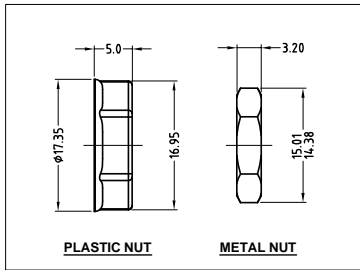
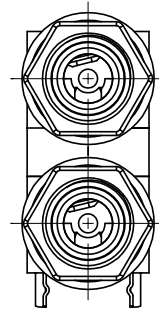
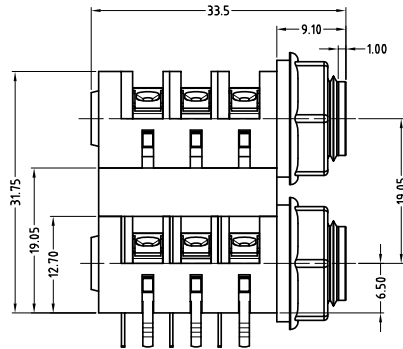
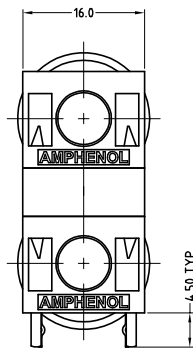
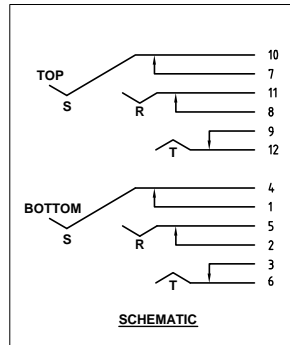


ISO VIEW  
SCALE 1:1

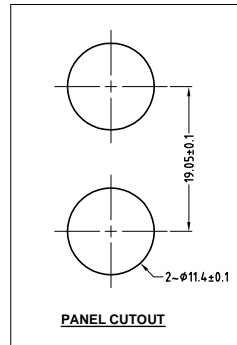


PLASTIC NUT

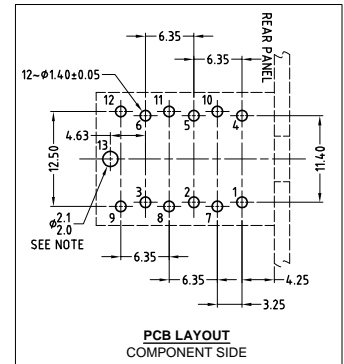
METAL NUT



SCHEMATIC



PANEL CUTOUT



PCB LAYOUT  
COMPONENT SIDE

CATALOGUE P/N	ASSEMBLY P/N	NUT OPTIONS
ACJS-PHD	55010156-502	PLASTIC
ACJS-MHD	55010156-302	METAL

NOTE: OPTIONAL MOUNTING HOLE FOR SELF-TAPPING M2 SCREW

UNLESS OTHERWISE SPECIFIED TOLERANCE TO BE		THIS DOCUMENT IS THE PROPERTY OF AMPHENOL AUSTRALIA PTY. LTD. NO PART THEREOF MAY BE REPRODUCED AND USED WITHOUT THE PRIOR WRITTEN CONSENT OF THE OWNER			
LINEAR	ANGULAR	CAD FILE: 55010156502222	DRN: L.V	DATE: 18-06-02	TITLE: 1/4" PHONE STEREO DUAL JACK CUSTOMER DRAWING
X ± 0.5	X° ± 1'	MATL: REFER TO COMPONENTS	CKD: M.N.H	DATE: 17-05-06	 Amphenol Australia Pty Ltd, 2 Finways Blvd, Keysborough, Vic 3172
X.X ± 0.1	X°X' ± 30"	FINISH: REFER TO COMPONENTS	APP'D: P.M	DATE: 17-05-06	
X.XX ± 0.05	X°XX' ± 15"	DO NOT SCALE	SCALE: 2:1 UOS	PART No: REFER TO CHART	DRAWING No: 55010156-502-2
DIMENSIONS IN MILLIMETRES		THIRD ANGLE PROJECTION		SHEET 2 OF 2	

2	CHANGE PLASTIC NUT P/N 52170018-531 TO P/N 52170019-531 & CORRECT SCHEMATIC DIAGRAM	L.V	31-01-05	8333
1	UPDATE TO COMPLY WITH MODIFIED COMPONENTS	L.V	11-06-03	8184
0	FIRST ISSUE	L.V	18-06-02	----
REV.	CHANGE DETAILS	BY	DATE	CHG/No