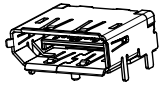
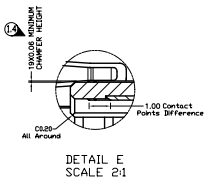
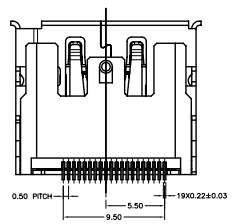
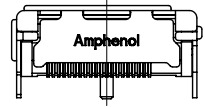
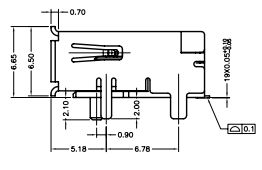
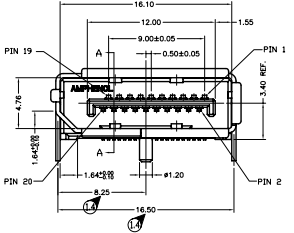
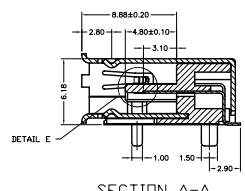
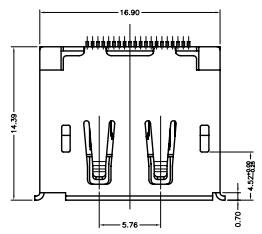


This document is the property of Amphenol Corporation and is delivered on the express condition that it is not to be disclosed, reproduced or used, in whole or in part, for manufacture or sale, by anyone other than Amphenol Corporation without its prior consent, & that no right is granted to disclose or to use any information in this document.

REVISIONS				
SYM	ECN	DESCRIPTION	DATE	APPROVED
1.1	HKXXXX	Initially release	01/30/08	IP
1.2	HKXXXX	Changed Dimension	03/05/08	IP
1.3	HKXXXX	Update Drawing	03/23/08	IP
1.4	HKXXXX	Add the dimension	04/03/08	IP

### Customer Drawing

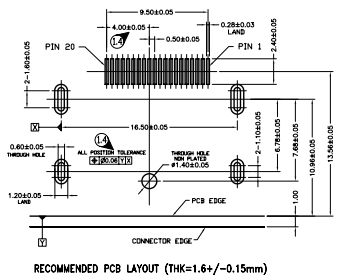


**NOTES:**  
**1. MATERIAL:**  
 HOUSING: HIGH TEMPERATURE PLASTIC UL94V-0, BLACK.  
 CONTACT: PHOSPHOR BRONZE ,THICKNESS=0.20mm  
 SHIELD: BRASS OR SPCC, THICKNESS=0.4mm  
**2. FINISH:**  
 CONTACT: REFER TO P/N SYSTEM ON MATING AREA  
 1.27~2.54um NICKEL UNDERPLATE OVERALL  
 12.54~5.08um PURE TIN ON SOLDER TAIL  
 SHIELD: REFER TO P/N SYSTEM  
**3. ELECTRICAL SPECIFICATION:**  
 CURRENT RATING: 0.5A  
 CONTACT RESISTANCE: 30mΩ MAX  
 INSULATOR RESISTANCE: 100MΩ MIN(UNMATED) 10MΩ MIN(MATED)  
 DIELECTRIC WITHSTANDING VOLTAGE: 500 V AC(UNMATED) 300 V AC(MATED)  
**4. ORDER P/N SYSTEM: DP-F201-001-X-X-XX**

**MATING AREA PLATING**  
 1- 0.76um MIN Au.  
 2- 0.38um MIN Au.  
 A- Gold FLASH

**PACKING METHOD:**  
 N/A- PACKING IN TRAY.  
 TR- PACKING IN TAPE AND REEL.

**SHELL PLATING:**  
 1- GOLD FLASH PLATED.  
 2- SOLDERABLE NICKEL PLATED.  
 3- TIN PLATED.



ITEM	PART NO.	REQ'D	DESCRIPTION
<b>APPROVAL DATE</b>			
DRAWN Draak.Xia		04/03/08	
CHECKED Ron.Xiao		04/03/08	
CHECKED			
DRAWING FILE : Drawing/DP/DP-F201-001-X-X-XX			
<b>Amphenol</b>			
<b>TITLE</b>			
DISPLAYPORT R/A SMT RECEPTACLE ( SHELL DIP)			
REMOVE SHARP EDGES		ANGLE OF PROJECTION	
DIMENSIONS		SIZE DRAWING NO.	
U.S.	INCHES	A3 C DP-F201-001-X-X-XX	
(METRIC)	(MM)	SCALE	NONE SHEET 1 OF 1
		1.4	REV.