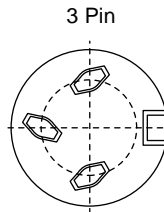
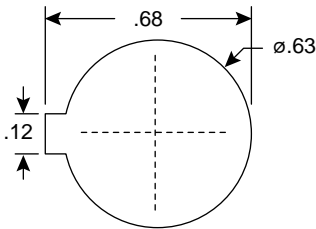
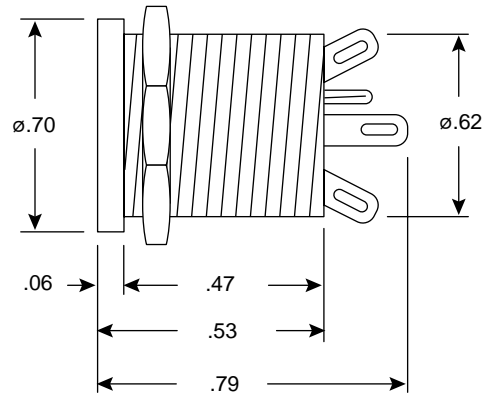
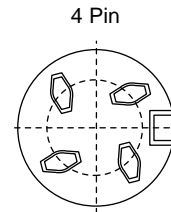


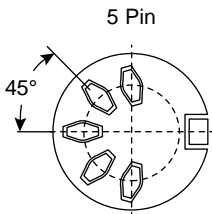
Dimensions (In.)



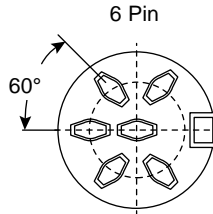
16HR653



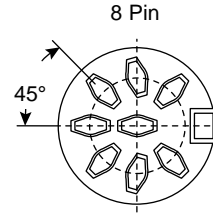
16HR654



16HR655



16HR656



16HR658

Specification:

- Working voltage: 100VDC or AC peak
- Test voltage: 1000VDC
- Current rating: 4A
- Insulation resistance: $10^{11}\Omega$ min @ 100VDC
- Contact resistance: 10m Ω max

- Capacity (mated): 3pF
- Temperature range: -25°C ~ +70°C
- Housing: zinc alloy with bright nickel finish or matt black plated
- Pin base mouldings: polyphenylene
- Contacts: silver plated brass