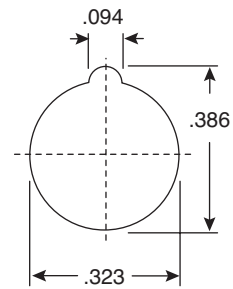
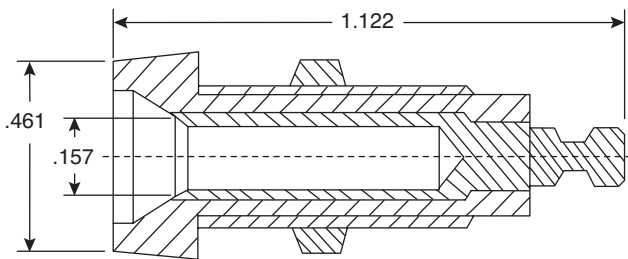
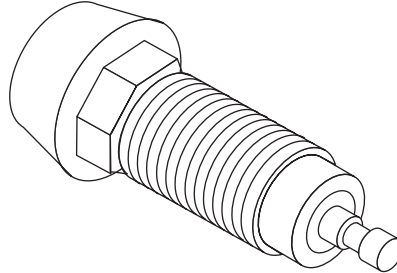


# Banana Jacks

164-6216, 164-6217



Banana Jacks



DIMENSIONS IN.

SPECIFICATIONS	
Rating:	10A
Working Voltage:	250VRMS
Absolute Max. Rating:	1500 Volts DC
Contact Resistance:	<10mΩ
Panel Thickness:	.531"
Single Pole Socket:	polypropylene
Socket Pin:	bright tin lead plated
Nut:	nickel plated brass
Color:	black (164-6216), red (164-6217)

Date Last Revised: 4-18-06

Available from Mouser Electronics  
1-800-346-6873  
www.mouser.com

KC-300576

164-6216, 164-6217

Specifications are subject to change without notice. No liability or warranty implied by this information. Environmental compliance based on producer documentation.