

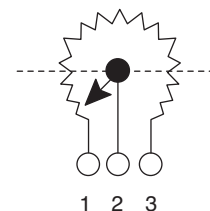
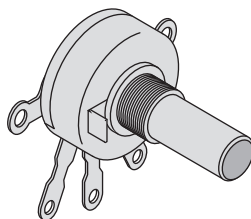


Potentiometer w/switch

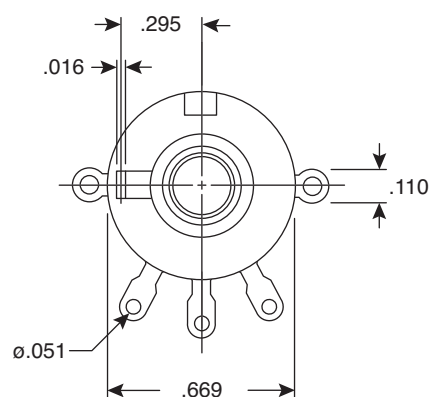
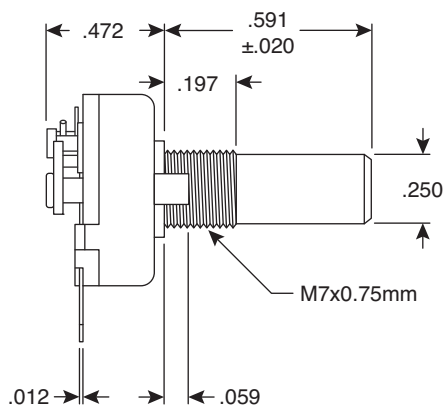
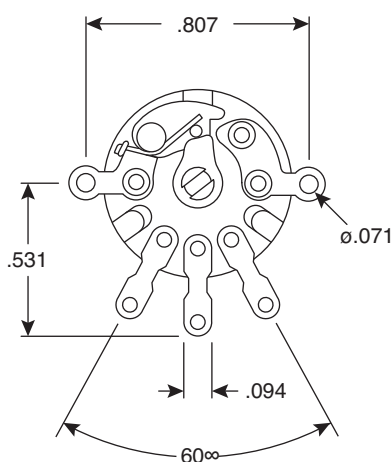
31CQ301-F, 31CQ305-F, 31CQ401-F,
31CQ405-F, 31CQ501-F, 31CQ505-F,
31CQ601-F



RoHS Compliant



Circuit Diagram



Dimensions mm (in.)

Specifications:

- Taper: linear
- Resistance element: carbon composition
- Wattage: .1W
- Voltage: 200VDC
- Rotation angle: $260 \pm 5^\circ$
- Rotational torque: 20~200gf.cm
- Anti-rotational torque: >3Kg.cm min.
- Insulation resistance: >50M Ω @ 500VDC
- Withstanding voltage: 500VAC for 1 minute
- Rotational life: 15,000 cycles
- Switch rating: 12VDC 1A
- Switch circuit: SPST
- Switch contact resistance: <20m Ω
- Switching angle: $30 \pm 10^\circ$
- Switching torque: 70~400gf.cm
- RoHS Compliant

MOUSER STOCK NO.	Value (Ω)
31CQ301-F	1K
31CQ305-F	5K
31CQ401-F	10K
31CQ405-F	50K
31CQ501-F	100K
31CQ505-F	500K
31CQ601-F	1 Meg