

BOURNS®

Features

- Standard or high torque option
- Long life carbon element
- Plain or knurled shaft option
- Brass bushing
- Metal shaft
- Audio or linear taper options
- Variety of resistance values



PDA24 - 24 mm Long Life Potentiometer

Electrical Characteristics

Taper.....Audio, linear
 Standard Resistance
from 10K to 1M ohms
 Standard Resistance Tolerance... ±15 %

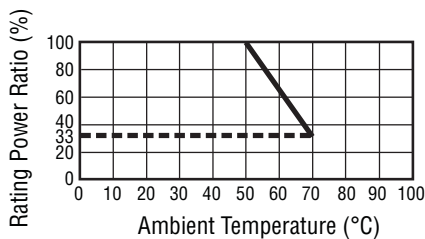
Environmental Characteristics

Operating Temperature
 -10 °C to +70 °C
 Power Rating
 Linear Taper0.5 watt
 Audio Taper0.25 watt
 Maximum Operating Voltage
 Linear Taper500 V
 Audio Taper250 V
 Rotational Noise100 mV max.

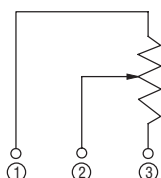
Mechanical Characteristics

Mechanical Angle300 ° ±5 °
 Rotational Torque
 Standard20 to 40 g-cm
 High70 to 100 g-cm
 Stop Strength7 kg-cm min.
 Rotational Life
200,000 shaft revolutions
 Soldering Condition
 Manual Soldering
300 °C within 3 seconds
 Wave Soldering
260 °C within 5 seconds
 HardwareOne flat washer and
 mounting nut supplied per
 potentiometer with bushing

Derating Curve

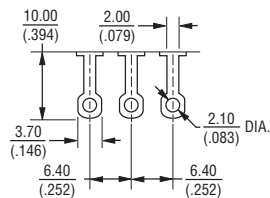
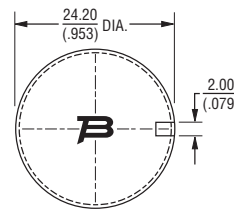
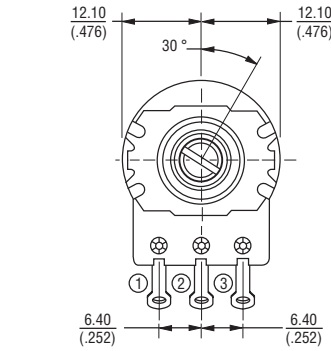
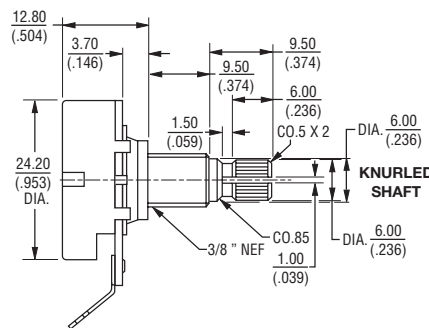


Circuit



Product Dimensions

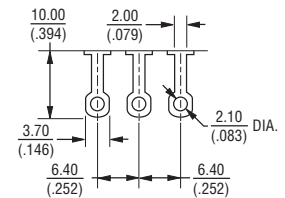
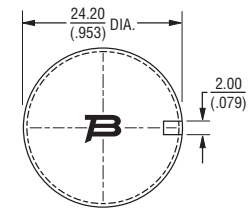
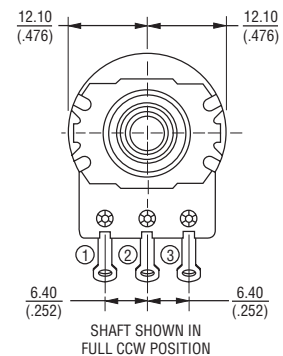
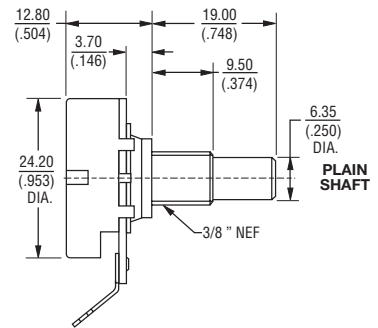
**PDA241-xxx00,
PDA241-xxx01**



TOLERANCES:
 UNDER 10.0 = ±0.3 (±0.012) 10.0 ~ 100 = ±0.5 (±0.020)

DIMENSIONS: $\frac{\text{MM}}{\text{(INCHES)}}$

PDA241-xxx02



TOLERANCES:
 UNDER 10.0 = ±0.3 (±0.012) 10.0 ~ 100 = ±0.5 (±0.020)

*RoHS Directive 2002/95/EC Jan 27 2003 including Annex.
 Specifications are subject to change without notice.
 Customers should verify actual device performance in their specific applications.

Additional Features

- Long life
- Long solder lugs
- ±15% resistance tolerance
- Anti-rotation pins
- RoHS compliant*

Applications

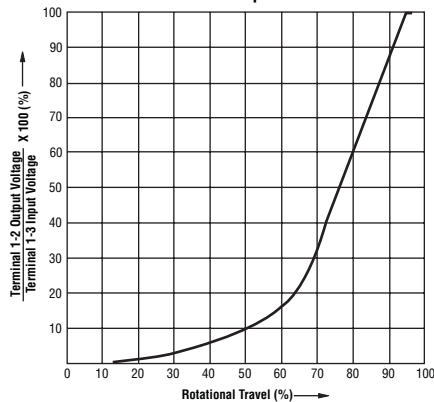
- Electric guitars
- Bass guitars
- Guitar amplifiers

PDA24 - 24 mm Long Life Potentiometer

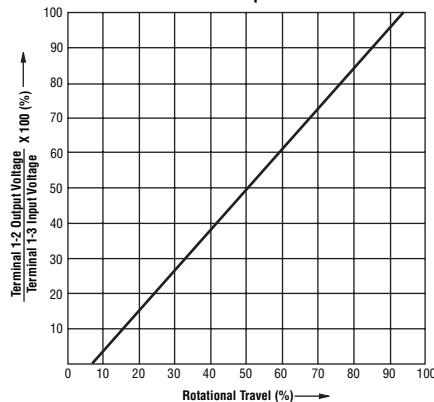
BOURNS®

Tapers

A2 Taper



B0 Taper



Standard Resistance Table

Resistance (Ohms)	Resistance Code
10,000	103
25,000	253
50,000	503
100,000	104
250,000	254
300,000	304
500,000	504
1,000,000	105

How To Order

PDA24 1 - SRT 01 - 504 A2

Model _____
 Number of Units _____
 1 = Single
 Torque Option _____
 Standard = SRT
 High = HRT
 Configuration _____
 00 = Knurled Shaft (18 Teeth) / Long Solder Lugs
 01 = Knurled Shaft (24 Teeth) / Long Solder Lugs
 02 = Plain Shaft / Long Solder Lugs
 Resistance Code (See Table) _____
 Resistance Taper (See Taper Charts) _____

BOURNS®

Asia-Pacific: Tel: +886-2 2562-4117 • Fax: +886-2 2562-4116

Europe: Tel: +41-41 768 5555 • Fax: +41-41 768 5510

The Americas: Tel: +1-951 781-5500 • Fax: +1-951 781-5700

www.bourns.com

REV. 08/10

Specifications are subject to change without notice.
 Customers should verify actual device performance in their specific applications.