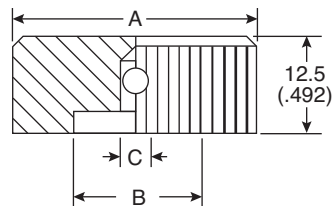


# Knobs

450-KB100, 450-KB101, 450-KB200,  
450-KB201, 450-KB300, 450-KB301

Date Last Revised: 04-30-08



Dimensions: mm (in)				
Part Number	A	B	C	Color
450-KB100	10 (.394)	8 (.315)	3.2 (1.26)	Natural
450-KB101	10 (.394)	8 (.315)	3.2(1.26)	Black
450-KB200	20 (.787)	15 (.591)	6.4(.525)	Natural
450-KB201	20 (.787)	15 (.591)	6.4(.525)	Black
450-KB300	30 (1.81)	25 (.984)	6.4(.525)	Natural
450-KB301	30 (1.81)	25 (.984)	6.4(.525)	Black

Specifications	
Material:	Aluminum
Finish:	Knurled
Tolerance:	+/-0.20

Available from Mouser Electronics  
1-800-346-6873 / [www.mouser.com](http://www.mouser.com)

EPD-200730

Specifications are subject to change without notice. No liability or warranty implied by this information. Environmental compliance based on producer documentation.