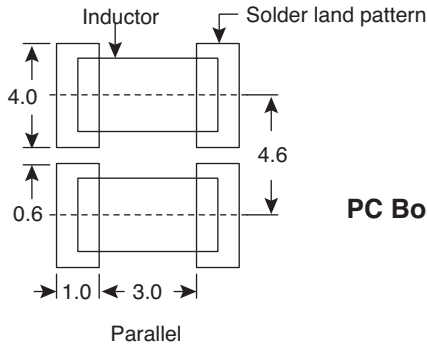
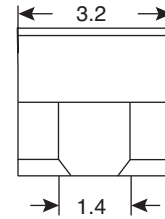
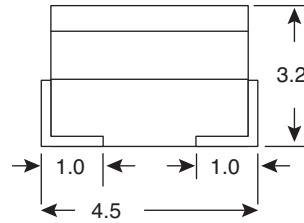
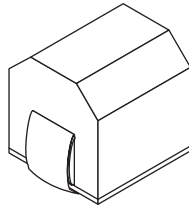
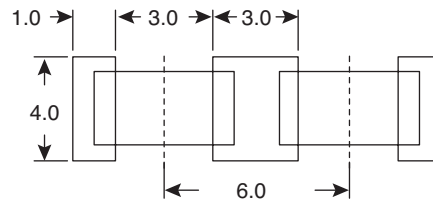


Dimensions: mm



Parallel

Dimensions (in.)

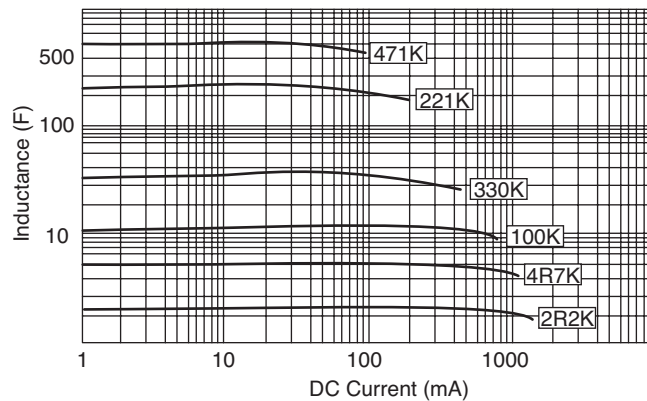
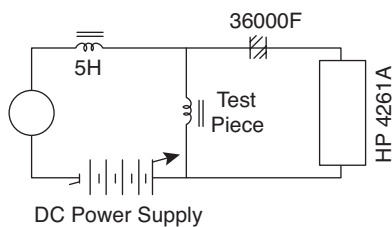


Series

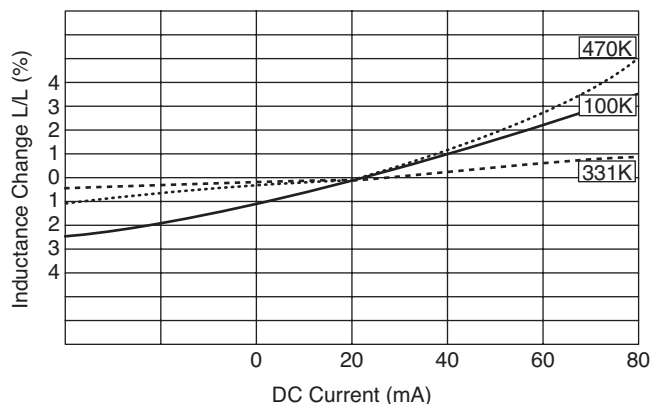
PC Board Patterns

Mouser Stock No.	L (μH)	Q (min.)	Test Freq. (MHz)	SRF (MHz)	DCR Max. Ω	RatedDC (mA)	Tol. ±%
434-18-R10M-RCX	0.10	35	25.2	300	0.18	800	20
434-18-R15M-RCX	0.15	35	25.2	250	0.22	730	20
434-18-R22M-RCX	0.22	40	25.2	200	0.25	665	20
434-18-R33M-RCX	0.33	40	25.2	165	0.28	605	20
434-18-R47M-RCX	0.47	40	25.2	145	0.32	545	20
434-18-R68M-RCX	0.68	40	25.2	135	0.40	500	20
434-18-1R0K-RCX	1.0	50	7.96	100	0.50	450	10
434-18-1R2K-RCX	1.2	50	7.96	80	0.55	430	10
434-18-1R5K-RCX	1.5	50	7.96	70	0.60	410	10
434-18-1R8K-RCX	1.8	50	7.96	60	0.65	390	10
434-18-2R2K-RCX	2.2	50	7.96	55	0.70	380	10
434-18-2R7K-RCX	2.7	50	7.96	50	0.75	370	10
434-18-3R3K-RCX	3.3	50	7.96	45	0.80	355	10
434-18-4R7K-RCX	4.7	50	7.96	35	1.00	315	10
434-18-5R6K-RCX	5.6	50	7.96	33	1.10	300	10
434-18-6R8K-RCX	6.8	50	7.96	27	1.20	285	10
434-18-8R2K-RCX	8.2	50	7.96	25	1.40	270	10
434-18-100K-RCX	10	50	2.52	20	1.60	250	10
434-18-120K-RCX	12	50	2.52	18	2.00	225	10
434-18-150K-RCX	15	50	2.52	17	2.50	200	10
434-18-180K-RC	18	50	2.52	15	2.80	190	10
434-18-220K-RC	22	50	2.52	13	3.20	180	10
434-18-270K-RC	27	50	2.52	12	3.60	170	10
434-18-330K-RC	33	50	2.52	11	4.00	160	10
434-18-470K-RC	47	50	2.52	10	5.00	140	10
434-18-560K-RC	56	50	2.52	9	5.50	135	10
434-18-101K-RCX	100	40	0.796	8	8.00	110	10
434-18-151K-RCX	150	40	0.796	5	9.00	105	10
434-18-181K-RC	180	40	0.796	5	9.50	102	10
434-18-221K-RC	220	40	0.796	4	10.00	100	10
434-18-331K-RC	330	40	0.796	3.5	14.00	85	10
434-18-471K-RC	470	40	0.796	3	26.00	62	10
434-18-681K-RC	680	30	0.796	3	30.00	50	10
434-18-102K-RCX	1000	20	0.252	2.5	40.00	30	10

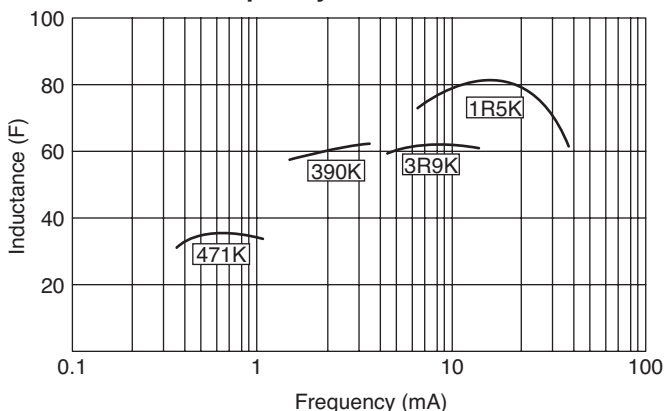
Specifications are subject to change without notice. No liability or warranty implied by this information. Environmental compliance based on producer documentation.



Inductance Change-Temperature Characteristics



Q-Frequency Characteristics



■ Specifications:

- Type: magnetic shielded chip
- Temperature rise: 20°C (360°F) max. (against ambient temperature)
- Ambient temperature: 80°C (176°F) max.
- Operating temperature: -30~ +100°C (-4~ +212°F) including self-temperature rise
- Storage temperature: -40~ +100°C (-4~ +212°F)
- Terminal tensile strength: 1kg min.
- Current rating: value obtained when current flows & temperature has risen to 20°C (36°F) or when LC current flows & the initial value of inductance has fallen by 10%, whichever is smaller
- Resistance to soldering heat: 260°C (500°F) for 10 seconds
- Resistance to solvent: conforms to MIL-STD-202E
- RoHS Compliant

Specifications are subject to change without notice. No liability or warranty implied by this information. Environmental compliance based on producer documentation.