

**BOURNS®**

**Features**

- Compact design, long life and high reliability
- Vertical and horizontal mount versions
- Momentary switch
- Dual LED design
- Flatted and knurled shaft styles



**PEL12D - 12 mm Encoder with Switch and Illuminated Shaft**

**Electrical Characteristics**

Output .....	2-bit quadrature code
Closed Circuit Resistance .....	3 ohms maximum
Contact Rating .....	0.5 mA @ 5 VDC
Insulation Resistance .....	100 megohms @ 250 VDC
Dielectric Withstanding Voltage	
Sea Level .....	300 VAC minimum
Electrical Travel .....	Continuous
Contact Bounce (15 RPM) .....	2.0 ms. maximum**
RPM (Operating) .....	100 maximum**

**Environmental Characteristics**

Operating Temperature Range .....	-10 °C to +70 °C (+14 °F to +158 °F)
Storage Temperature Range .....	-40 °C to +85 °C (-40 °F to +185 °F)
Operating Humidity .....	25 % to 85 % R.H.
Rotational Life .....	30,000 cycles minimum
Switch Life .....	20,000 cycles minimum
IP Rating .....	IP 40

**Mechanical Characteristics**

Mechanical Angle .....	360 ° continuous
Detent Torque .....	30 to 200 g-cm (0.42 to 2.77 oz.-in.)
Running Torque .....	50 g-cm (0.69 oz.-in.) maximum
Shaft Strength (Push-Pull) .....	5 kgf (11.0 lbs.)
Weight .....	3 gm (0.1 oz.) maximum
Terminals .....	Printed circuit board terminals
Soldering Condition	
Wave Soldering .....	Sn95.5/Ag2.8/Cu0.7 solder with no-clean flux; 260 °C max. for 5 ± 1 seconds
Hand Soldering .....	Not recommended
Hardware .....	No hardware supplied

**Switch Characteristics**

Switch Type .....	Contact Push ON Momentary SPST
Power Rating (Resistive Load) .....	10 mA at 5 V DC
Contact Resistance .....	100 milliohms
Switch Travel .....	0.5 +0.0/-0.3 mm
Switch Actuation Force .....	450 ± 200 gf (15.9 ± 7.0 oz.)

**How To Order**

**PEL12D - 4 0 21 F - S 1 024**

Model \_\_\_\_\_

Terminal Configuration \_\_\_\_\_  
    2 = Vertical Mount/Side Exit PC Pin    4 = Horizontal Mount/Rear Exit PC Pin

Detent Option \_\_\_\_\_  
    0 = No Detents    2 = 24 Detents

Standard Shaft Length \_\_\_\_\_  
    Flatted:                      Knurled:  
    16 = 16.0 mm    26 = 26.0 mm    25 = 25.0 mm  
    18 = 18.5 mm    31 = 31.0 mm  
    21 = 21.0 mm

Shaft Style \_\_\_\_\_  
    F = Insulated Flatted Shaft            S = Insulated Knurled Shaft (18 Teeth)

Switch Configuration \_\_\_\_\_  
    S = Push Momentary Switch

LED Color \_\_\_\_\_  
    Dual:  
    1 = Blue/Orange  
    2 = Green/Red  
    3 = Blue/Green

Resolution \_\_\_\_\_  
    024 = 24 Pulses per 360 ° Rotation

\*RoHS Directive 2002/95/EC Jan 27, 2003 including Annex.  
 \*\*Devices are tested using standard noise reduction filters. For optimum performance, designers should use noise reduction filters in their circuits.  
 Specifications are subject to change without notice.  
 Customers should verify actual device performance in their specific applications.

## Applications

Level control, tuning and timer settings in:

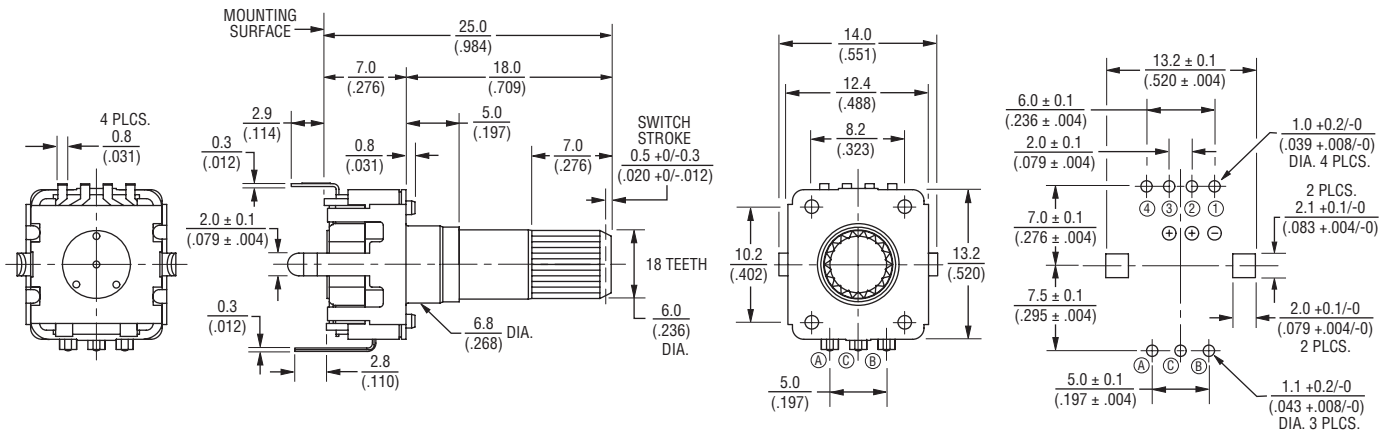
- Audio-visual equipment
- Consumer electric appliances
- Musical instrumentation
- Communications equipment

## PEL12D - 12 mm Encoder with Switch and Illuminated Shaft

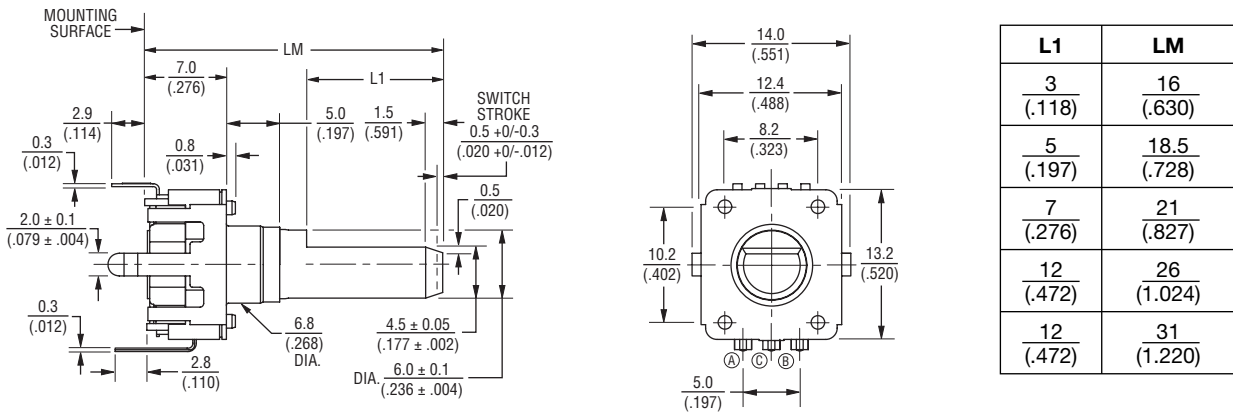
**BOURNS®**

### Product Dimensions

#### PEL12D-4xxxS-Sxxxx (Horizontal Mount w/Dual LED & Switch)

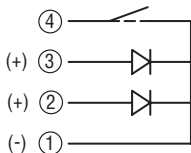


#### PEL12D-4xxxF-Sxxxx (Horizontal Mount w/Dual LED & Switch)



DIMENSIONS:  $\frac{\text{MM}}{(\text{INCHES})}$

### Dual LED Circuit



TOLERANCES:  
 UNDER  $\frac{10.0}{(.394)} = \frac{\pm 0.3}{(\pm .012)}$      $\frac{10.0 - 100}{(.394 - 3.937)} = \frac{\pm 0.5}{(\pm .020)}$

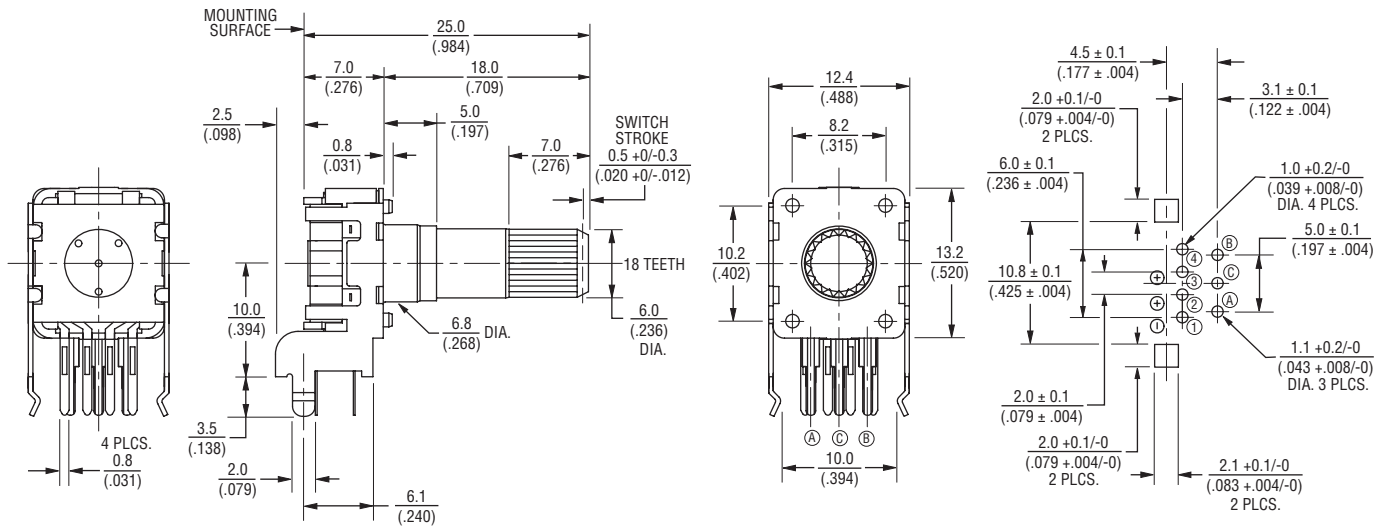
Specifications are subject to change without notice.  
 Customers should verify actual device performance in their specific applications.

# PEL12D - 12 mm Encoder with Switch and Illuminated Shaft

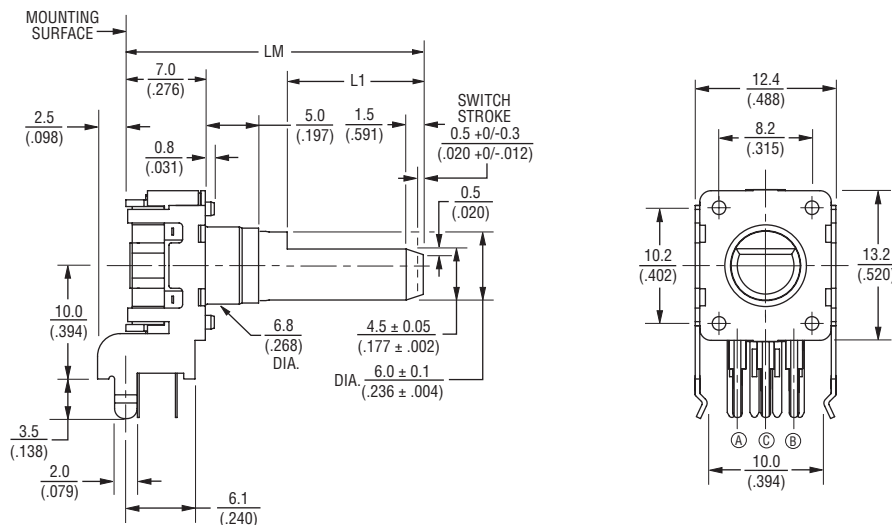
**BOURNS®**

## Product Dimensions

### PEL12D-2xxxS-Sxxxx (Vertical Mount w/Dual LED & Switch)



### PEL12D-2xxxF-Sxxxx (Vertical Mount w/Dual LED & Switch)



L1	LM
$\frac{3}{.118}$	$\frac{16}{.630}$
$\frac{5}{.197}$	$\frac{18.5}{.728}$
$\frac{7}{.276}$	$\frac{21}{.827}$
$\frac{12}{.472}$	$\frac{26}{1.024}$
$\frac{12}{.472}$	$\frac{31}{1.220}$

DIMENSIONS:  $\frac{\text{MM}}{\text{(INCHES)}}$

TOLERANCES:  
 UNDER  $\frac{10.0}{.394} = \frac{\pm 0.3}{(\pm 0.012)}$   $\frac{10.0 - 100}{(.394 - 3.937)} = \frac{\pm 0.5}{(\pm 0.020)}$

Specifications are subject to change without notice.  
 Customers should verify actual device performance in their specific applications.

# PEL12D - 12 mm Encoder with Switch and Illuminated Shaft

**BOURNS®**

## LED Characteristics (Dual)

LED Color		Power Dissipation (mW)	DC Forward Current (mA)	Forward Voltage (V)	
				Typ.	Max.
Blue/ Orange	Blue	105	30	3.3	4.0
	Orange	75	30	2.1	2.5
Green/ Red	Green	120	30	3.2	4.0
	Red	75	30	1.95	2.5
Blue/ Green	Blue	120	30	3.3	4.0
	Green	120	30	3.2	4.0
Red/ Green	Red	75	30	1.95	2.5
	Green	120	30	3.2	4.0

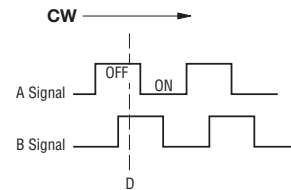
### Notes:

Reverse Current: 10  $\mu$ A  
 Reverse Voltage: 5 VDC  
 Test Condition (IF): 20 mA

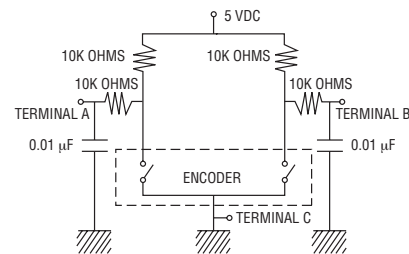
## LED Terminal Decoder

Code	Color	Terminals
1	Blue / Orange	① ② / ① ③
2	Green / Red	① ② / ① ③
3	Blue / Green	① ② / ① ③

## Quadrature Output Table



## Suggested Filter Circuit



**BOURNS®**

### Asia-Pacific:

Tel: +886-2 2562-4117  
 Fax: +886-2 2562-4116

### Europe:

Tel: +41-41 768 5555  
 Fax: +41-41 768 5510

### The Americas:

Tel: +1-951 781-5500  
 Fax: +1-951 781-5700

[www.bourns.com](http://www.bourns.com)

REV. 02/11

Specifications are subject to change without notice.  
 Customers should verify actual device performance in their specific applications.