

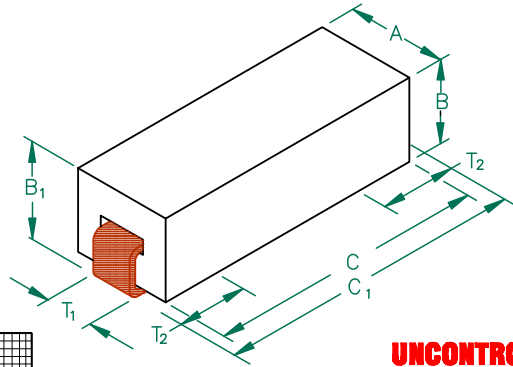
PHYSICAL DIMENSIONS:

A	3.05 [.120]	+ 0.08 [.003]
B	2.54 [.100]	+ 0.08 [.003]
B ₁	3.05 [.120]	MAX
C	8.51 [.335]	+ 0.23 [.009]
C ₁	9.53 [.375]	MAX

WIRE DIMENSIONS:

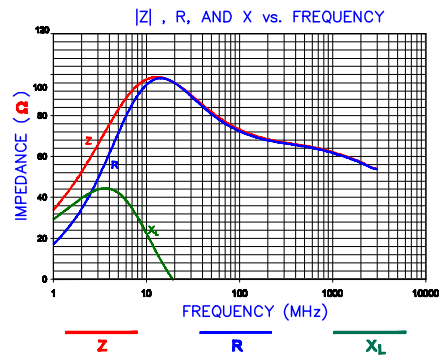
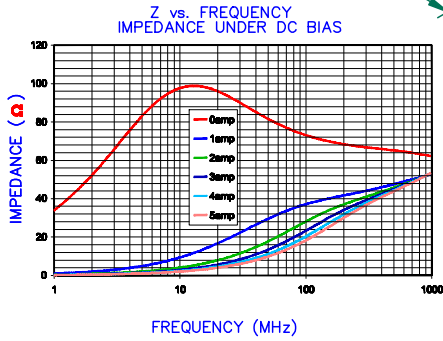
T ₁	1.27 [.050]	+ REF.
T ₂	1.52 [.060]	+ 0.51 [.020]

35F0121-1SR-10



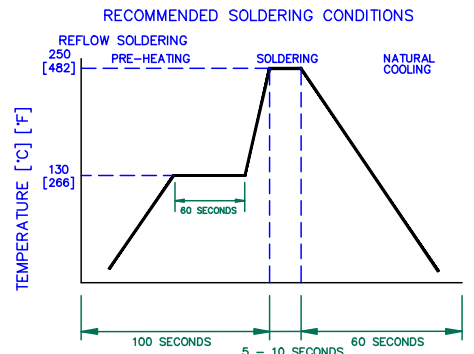
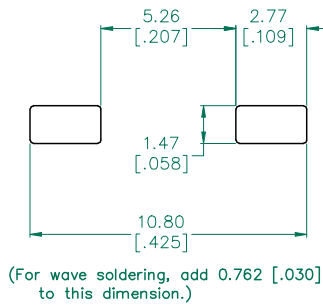
ELECTRICAL CHARACTERISTICS:				
	Z (Ω) @		DCR (Ω)	Rated Current
	1 MHz	10 MHz		
Nominal	-	90		
Minimum	30	72		
Maximum	-	-	.001	10,000 mA

- NOTES: UNLESS OTHERWISE SPECIFIED
1. TAPED AND REELED per CURRENT EIA SPECS 13" REELS, 2500 PCS/REEL.
 2. COMPONENTS SHOULD BE ADEQUATELY PREHEATED BEFORE SOLDERING.
 3. REF. CARRIER TAPE SPECIFICATION # CART121-13.
 4. TERMINATION FINISH IS 100% TIN.



UNCONTROLLED DOCUMENT

LAND PATTERNS FOR REFLOW SOLDERING



DIMENSIONS ARE IN mm (INCHES).			THIS DOCUMENT CONTAINS INFORMATION WHICH IS PROPRIETARY AND CONFIDENTIAL TO STEWARD. NO PRODUCTION OR PUBLICATION OF THIS DOCUMENT IN WHOLE OR IN PART SHALL BE MADE WITHOUT WRITTEN AUTHORIZATION FROM STEWARD.		
D	CORRECT FREQUENCY ON SHT 2of3 CORRECT C TOLS ON SHEET 3	10/16/07	JRK	PROJECT/PART NUMBER: 35F0121-1SR-10	REV: D PART TYPE: ASSEMBLY DRAWN BY: JRK
C	UPDATE LANDPATTERN	08/09/07	JRK	DATE: 5/26/04	SCALE: NTS SHEET: 2 of 3
B	ADD ROHS SYMBOL UPDATE LOGO	5/04/07	JRK	CAD # 35F0121-1SR-10-D-2	TOOL # H0121
A	ORIGINAL DRAFT	5/26/04	JRK		
REV	DESCRIPTION	DATE	INT		

AGILENT E4991A RF Impedance/Material Analyzer
HP 16194A Test Fixture. TEST REF. 3544