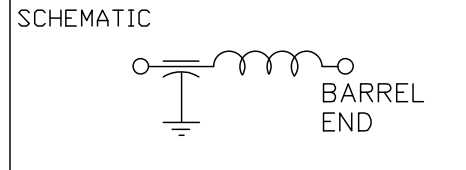


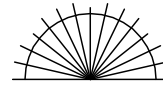
NOTES:  
1. SUGGESTED MOUNTING HOLE =  $\phi.130$



LEAD FINISH: GOLD PL.	
CASING FINISH: GOLD PL.	
CAPACITANCE	15nF MIN.
TEMP. RANGE	-55°C TO 125°C
CURRENT	10 AMP MAX.
WORKING VOLTAGE	125°C -- VAC MAX. 125°C 200 VDC MAX.
D.C. RESISTANCE	.01ohms MAX.
MIN. I.L. PER MIL-STD-220 AT 25°C NO LOAD	
FREQ. MHz	I.L. (db)
1	10
10	28
100	50
1 GHz	65
10 GHz	65



MARKING:  
PART: 2 WHITE COLOR DOTS  
BAG:  
SCI-9980-153  
DATE CODE  
LOT NO.  
QTY/BAG (200 MAX.)

	00	REV. NO.	TOLERANCES UNLESS OTHERWISE SPECIFIED	 SPECTRUM CONTROL INC.	FAIRVIEW PENNSYLVANIA	
	CN 53136-ENG	CHANGE NOTICE	Fractions $\pm 1/64$		Dwn. KAUFFMAN	Description
			Dec. .xx $\pm$	Date 2-25-10	FEEDTHRU FILTER	
			Dec. .xxx $\pm .005$	Engr. B. DEVINE	SCI-9980-153	
			Angles $\pm 0^{\circ} 30'$	Scale NONE		
			CODE IDENT. NO. 0LSP2			