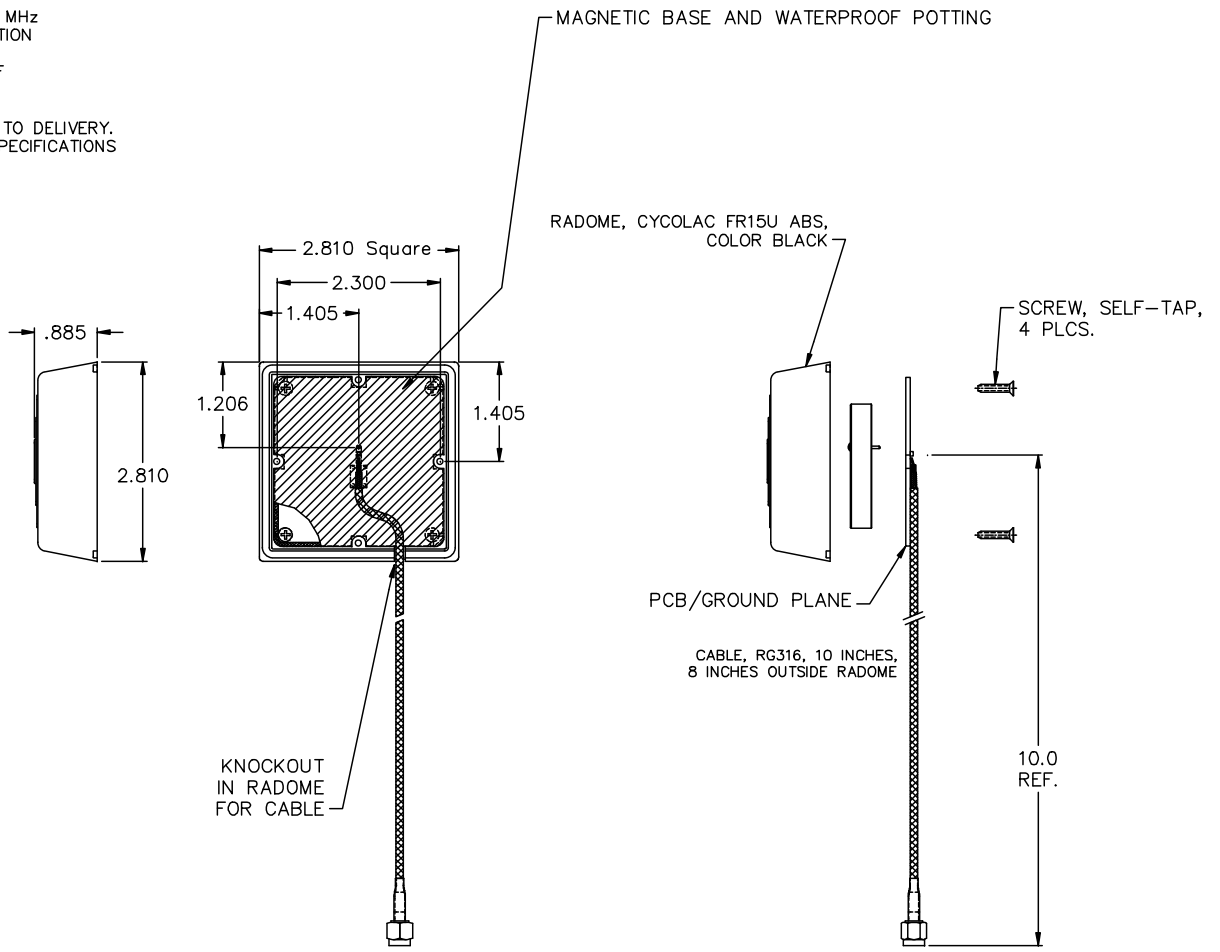

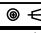


- NOTES:
- ELECTRICAL SPECIFICATIONS:
 CENTER FREQUENCY = 1615±10 MHz
 LEFT HAND CIRCULAR POLARIZATION
 2:1 VSWR B.W. = 135MHz MIN.
 GAIN SHALL BE 3dBic MIN. @ CF
 A/R SHALL BE 6dB MAX. @ CF
 Z_{in} = 50 OHMS
 - 100% ELECTRICAL TEST PRIOR TO DELIVERY.
 - FOOTPRINT AND ELECTRICAL SPECIFICATIONS ARE SUBJECT TO CHANGE.



										00	REV. N/D	UNLESS OTHERWISE SPECIFIED DIMENSIONS ARE IN INCHES.	TOLERANCES UNLESS OTHERWISE SPECIFIED Fractions ± 1/64 Dec. .xxx± .01 Dec. .xxx± .005 Angles ±0° 30'	 FAIRVIEW PENNSYLVANIA Description Dwn. KAUFFMAN Date 5-25-10 Eng. J. KRAUS Sheet 1 of 1
										DN 54549-ENG	CHANGE NOTICE	DO NOT SCALE.	CODE IDENT. NO. OLSP2	
										 THIRD ANGLE			AR1615CC1575XXF	

Quality Products From The Specialists In Electro-Magnetic Compatibility