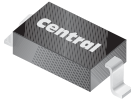


CMDSH-3
SURFACE MOUNT
SILICON SCHOTTKY DIODE

SUPERmini™



SOD-323 CASE

• Device is **Halogen Free** by Design



www.centralemi.com

DESCRIPTION:

The CENTRAL SEMICONDUCTOR CMDSH-3 type is a Silicon Schottky diode, manufactured in a **SUPERmini™** surface mount package, designed for fast switching applications requiring a low forward voltage drop.

MARKING CODE: S1

MAXIMUM RATINGS: ($T_A=25^\circ\text{C}$ unless otherwise noted)	SYMBOL		UNITS
Peak Repetitive Reverse Voltage	V_{RRM}	30	V
Average Forward Current	I_O	100	mA
Peak Forward Surge Current, $t_p=10\text{ms}$	I_{FSM}	750	mA
Power Dissipation	P_D	250	mW
Power Dissipation ($T_L=25^\circ\text{C}$)	P_D	833	mW
Operating and Storage Junction Temperature	T_J, T_{stg}	-65 to +150	$^\circ\text{C}$
Thermal Resistance	θ_{JA}	500	$^\circ\text{C/W}$
Thermal Resistance	θ_{JL}	150	$^\circ\text{C/W}$

ELECTRICAL CHARACTERISTICS: ($T_A=25^\circ\text{C}$)

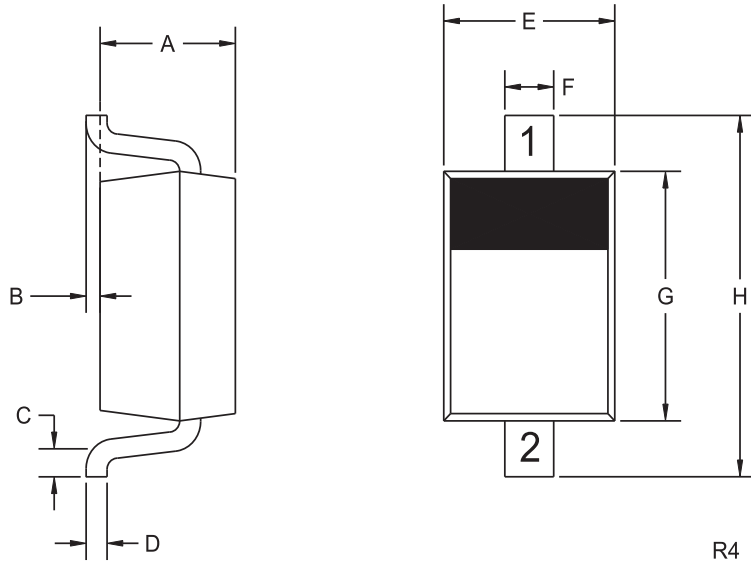
SYMBOL	TEST CONDITIONS	MIN	TYP	MAX	UNITS
I_R	$V_R=25\text{V}$			1.0	μA
BV_R	$I_F=100\mu\text{A}$	30			V
V_F	$I_F=2.0\text{mA}$		0.30		V
V_F	$I_F=15\text{mA}$		0.36		V
V_F	$I_F=50\text{mA}$		0.47	0.55	V
V_F	$I_F=100\text{mA}$		0.58	0.80	V
C_T	$V_R=10\text{V}, f=1.0\text{MHz}$		7.0		pF

R7 (8-January 2010)

CMDSH-3
SURFACE MOUNT
SILICON SCHOTTKY DIODE



SOD-323 CASE - MECHANICAL OUTLINE



LEAD CODE:

- 1) CATHODE
- 2) ANODE

MARKING CODE: S1

SYMBOL	INCHES		MILLIMETERS	
	MIN	MAX	MIN	MAX
A	0.031	0.039	0.80	1.00
B	0.000	0.004	0.00	0.10
C	0.008	-	0.20	-
D	0.004	0.007	0.11	0.19
E	0.045	0.053	1.15	1.35
F	-	0.014	-	0.35
G	0.063	0.071	1.60	1.80
H	0.094	0.102	2.40	2.60

SOD-323 (REV: R4)

R7 (8-January 2010)

www.centalsemi.com