

ML485

1.5-3.2 GHz High IP3 Mixer with Integrated LO Amp

Applications

- PCS / 3G Base station / Repeaters
- WCDMA / LTE
- WiMax / WiBro
- ISM / Fixed Wireless
- HPA Feedback Paths

Product Features

- High Dynamic Range Mixer with Integrated LO Driver
- +35 dBm Input IP3
- 8 dB Conversion Loss
- RF: 1500 – 3200 MHz
- LO: 1400 – 3500 MHz
- IF: 50 – 300 MHz
- +5V Supply @ 40 mA
- 0 dBm Drive Level
- RoHS-compliant MSOP8 (14 mm²)

General Description

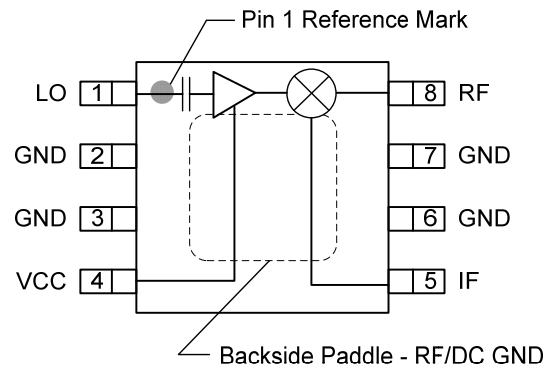
The ML485 high linearity converter combines a passive GaAsFET mixer with an integrated LO driver in an ultra-small lead-free/green/RoHS-compliant MSOP-8 package. The double-balanced integrated IC is able to operate across a wide 1.5-3.2 GHz frequency range to achieve +35 dBm Input IP3 while drawing a very low 40mA current. The ML485 can be used as an up-converter or down-converter in a low-side or high-side LO configuration.

A LO buffer amplifier is integrated on the chip to allow for operation directly from a synthesizer requiring only 0 dBm of LO drive level. The dual-stage LO driver provides a stable input power level into the mixer to allow for consistent performance over a wide range of LO power levels. The converter requires no external baluns and supports a wide range of IF frequencies.

Typical applications include frequency up/down conversion, modulation and demodulation for receivers and transmitters used in 2.5G and 3G mobile infrastructure. Due to the wide frequency range of operation, the converter can also be used for WiMAX, WiBro, ISM, LTE and fixed wireless applications



Functional Block Diagram



Pin Configuration

Pin #	Symbol
1	LO
2, 3, 6, 7	GND
4	Vcc
5	IF
8	RF
Backside Paddle	GND

Ordering Information

Part No.	Description
ML485	1.5-3.2 GHz Mixer w/ Integrated LO Amp
ML485-PCB	Fully Assembled Evaluation Board

Standard T/R size = 1000 pieces on a 7" reel.

ML485

1.5-3.2 GHz High IP3 Mixer with Integrated LO Amp



Specifications

Absolute Maximum Ratings

Parameter	Rating
Storage Temperature	-65 to +150
DC Voltage	+7 V
Input IF / RF Power, CW, +25°C	+27 dBm
LO Power	+10 dBm

Operation of this device outside the parameter ranges given above may cause permanent damage.

Recommended Operating Conditions

Parameter	Min	Typ	Max	Unit
V _{cc}	+4.75	+5	+5.25	V
T _J (for >10 ⁶ hours MTTF)			150	°C
Operational Temperature	-40		+85	°C

Electrical specifications are measured at specified test conditions. Specifications are not guaranteed over all recommended operating conditions.

Electrical Specifications

Test conditions unless otherwise noted: V_{cc}+5V, Temp=+25°C. (see note 1)

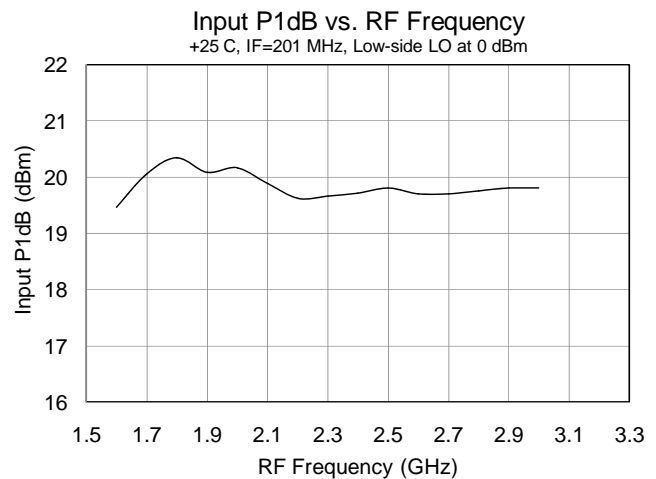
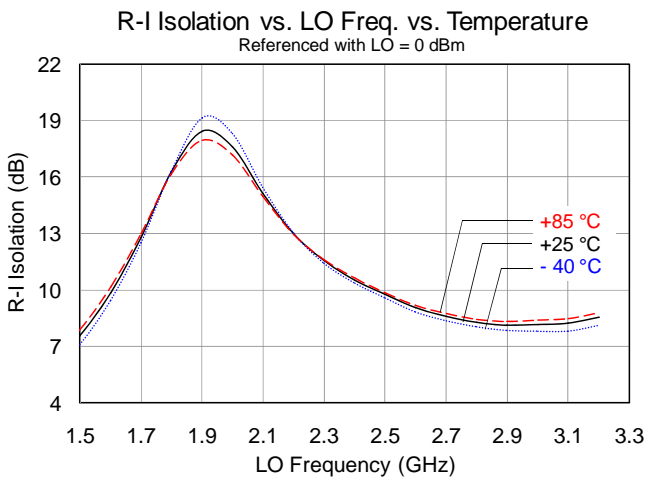
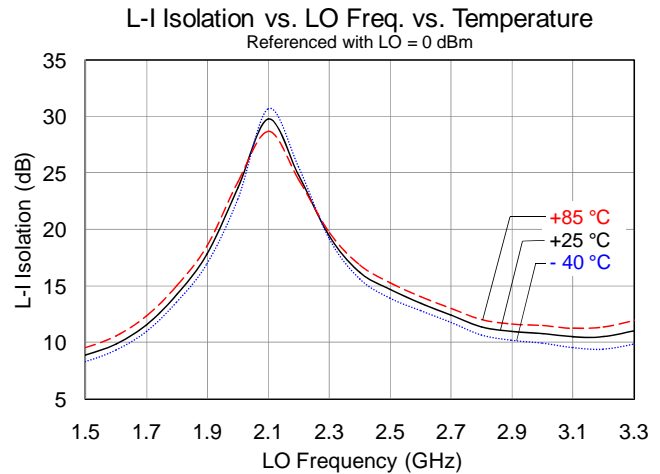
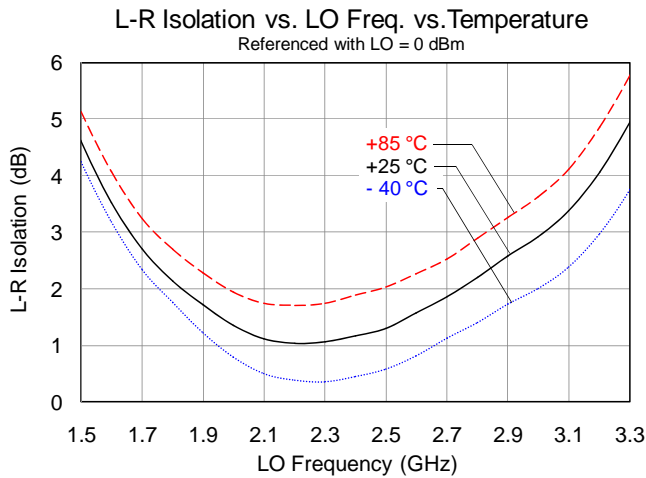
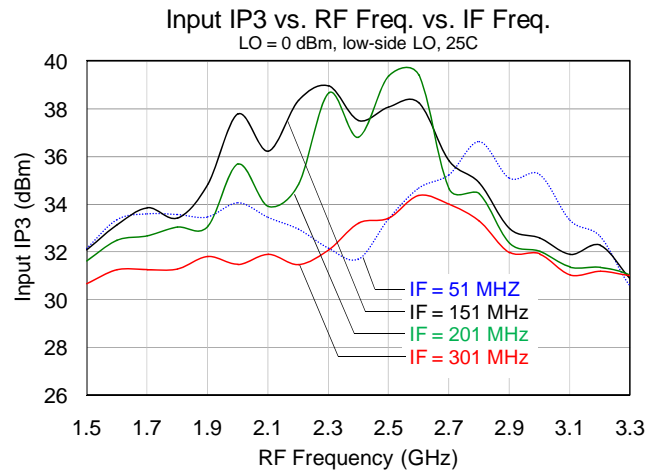
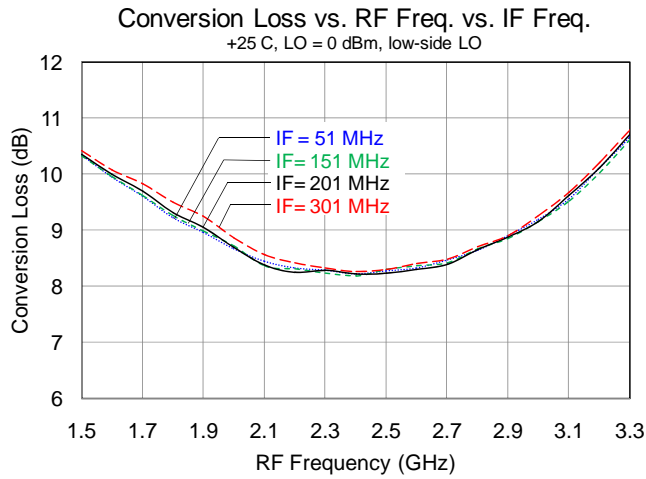
Parameter	Min	Typ	Max	Min	Typ	Max	Min	Typ	Max	Min	Typ	Max	Unit
RF Freq Range	1700-1800			1800-2200			2300-2400			2500-2700			MHz
LO Freq Range	1400-1750			1500-2150			2000-2350			2200-2650			MHz
IF Freq Range	50-300			50-300			50-300			50-300			MHz
SSB Conversion Loss		9.4			8.7	10		8.5			9		dB
Input IP3 (see note 2)	+28	+34		+30	+35			+37			+36		dBm
LO Leakage RF Port		-5			-2			-1			-1		dBm
LO Leakage IF Port		-11			-18			-25			-15		dBm
RF-IF Isolation		13			16			14			11		dB
RF Return Loss		13			13			15			16		dB
IF Return Loss		14			14			14			14		dB
LO Return Loss		10			10			12			13		dB
Input P1dB		20			20			19.5			19.5		dBm
LO Drive Level	-2	0	+4	-2	0	+4	-2	0	+4	-2	0	+4	dBm

Parameter	Min	Typ	Max	Unit
Supply Voltage		+5		V
Supply Current		40		mA
Thermal Resistance (see note 3)			84	°C/W

Notes:

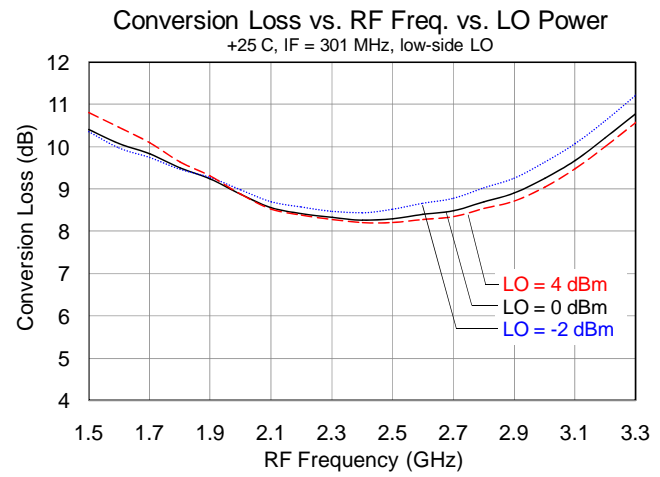
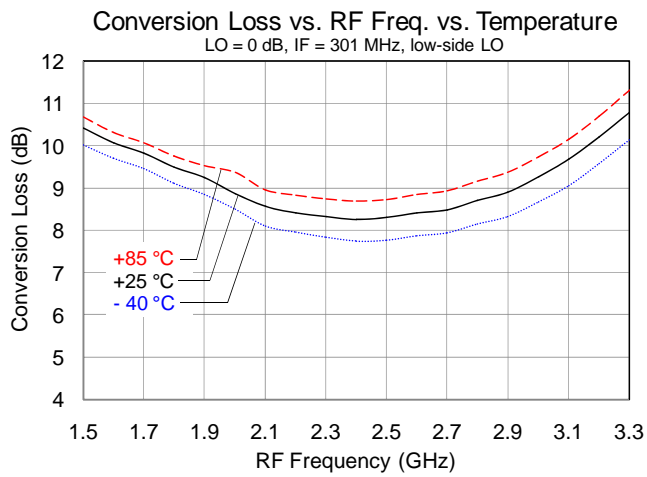
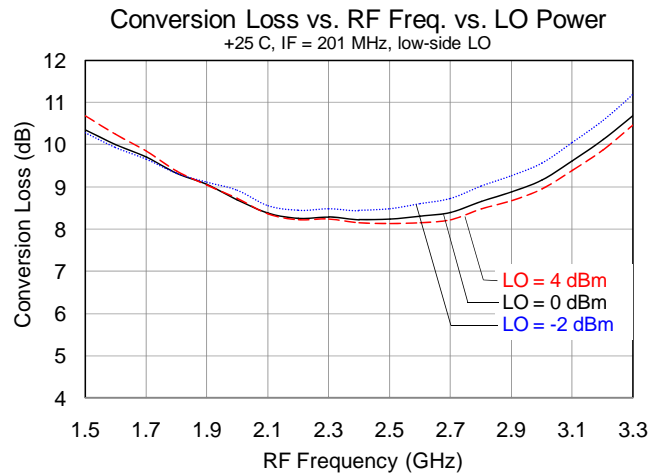
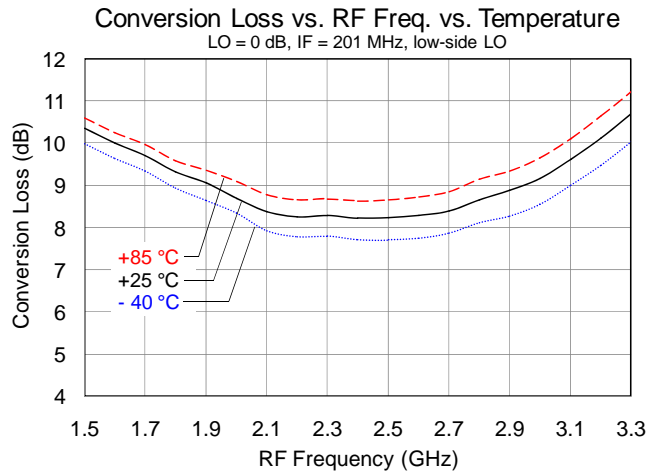
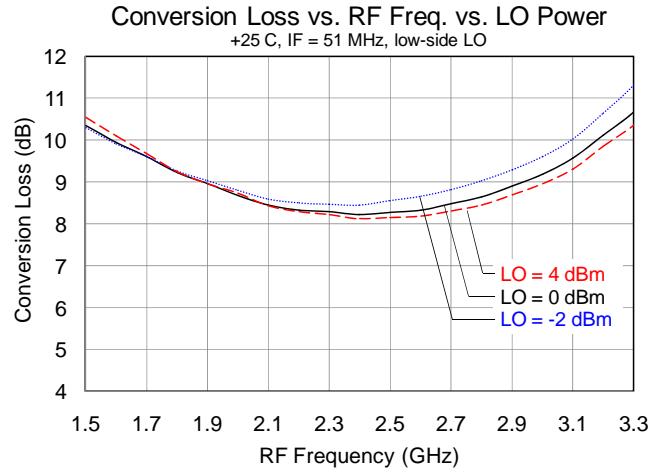
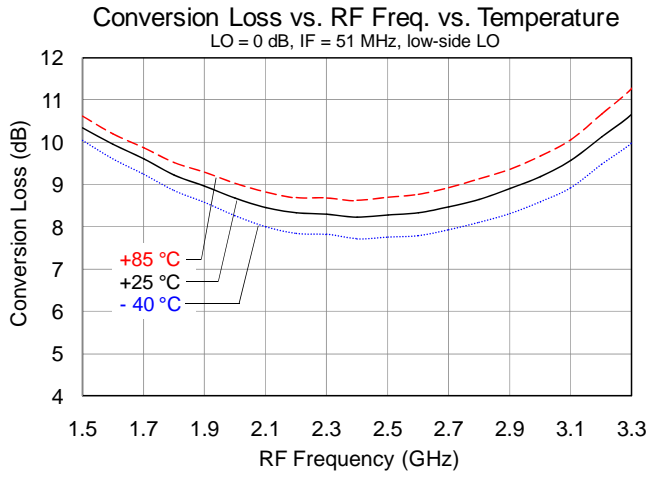
- Specifications are shown with 0dBm LO drive and IF = 200 MHz in a down converting configuration with a low-side LO.
- IIP3 is measured with Δf = 1 MHz with RFin = 0 dBm / tone.
- Thermal resistance is specified junction to case, θ_{jc}

Typical Performance Plots



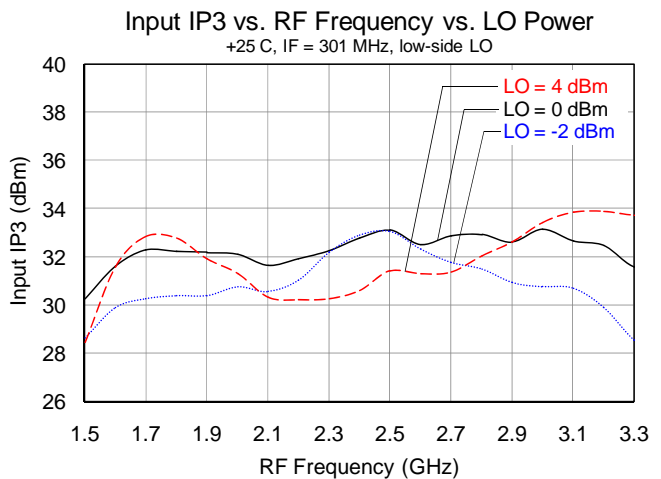
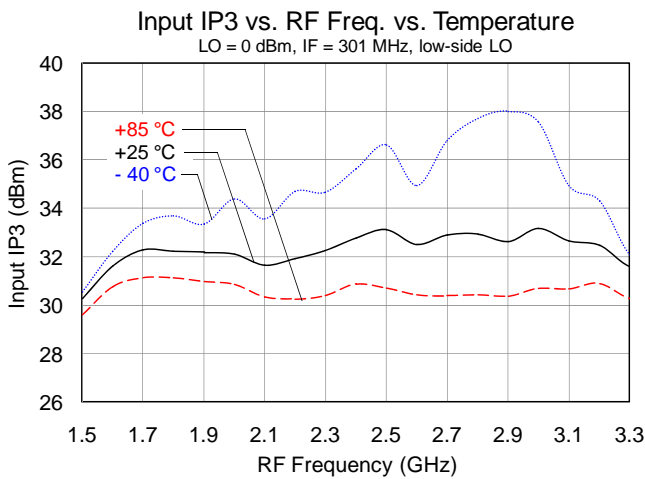
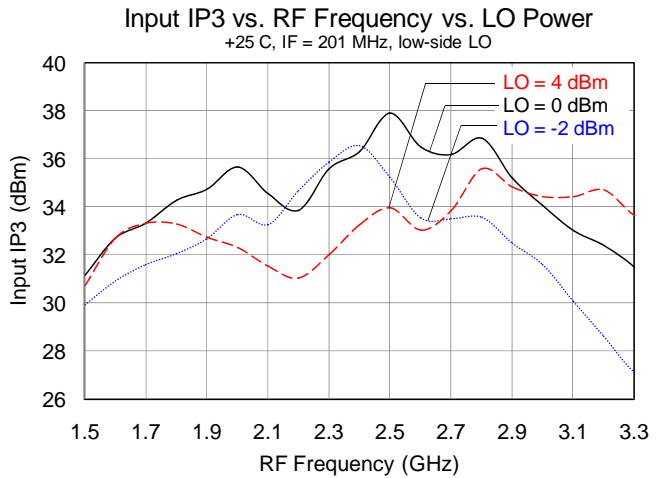
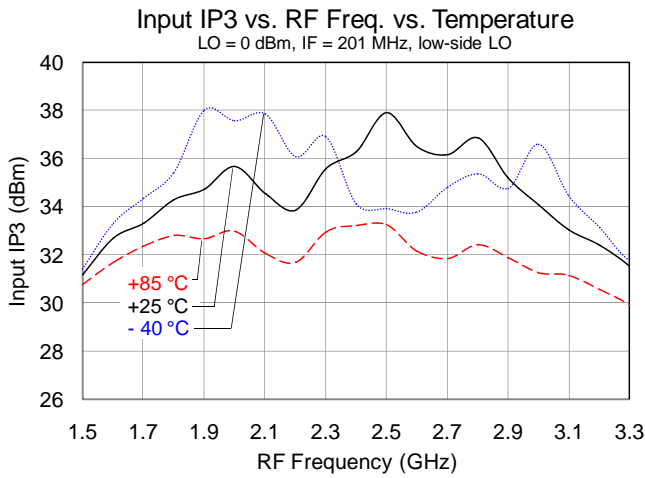
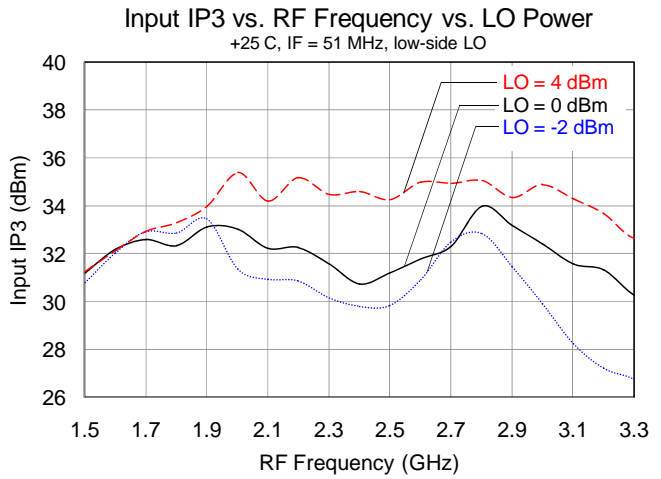
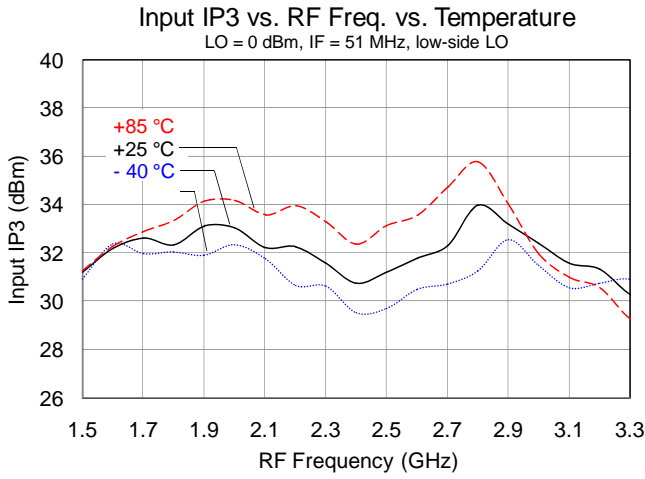
ML485

1.5-3.2 GHz High IP3 Mixer with Integrated LO Amp



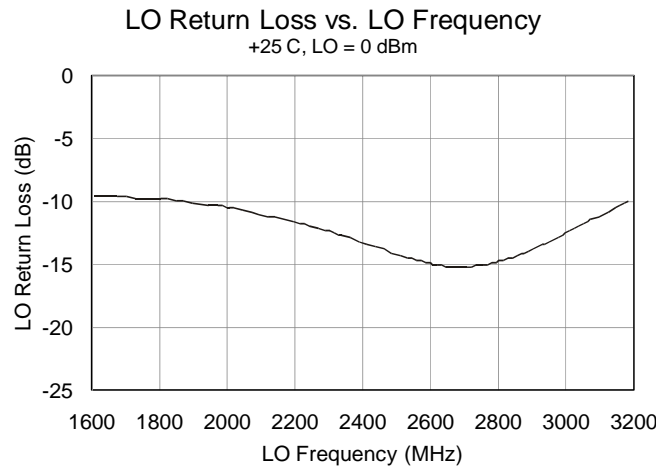
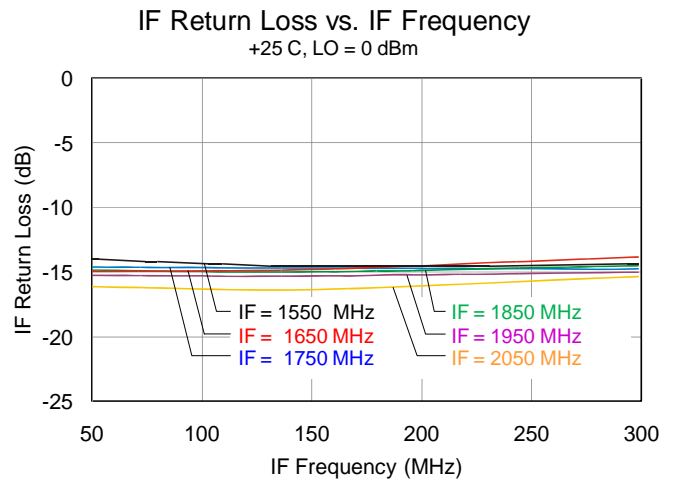
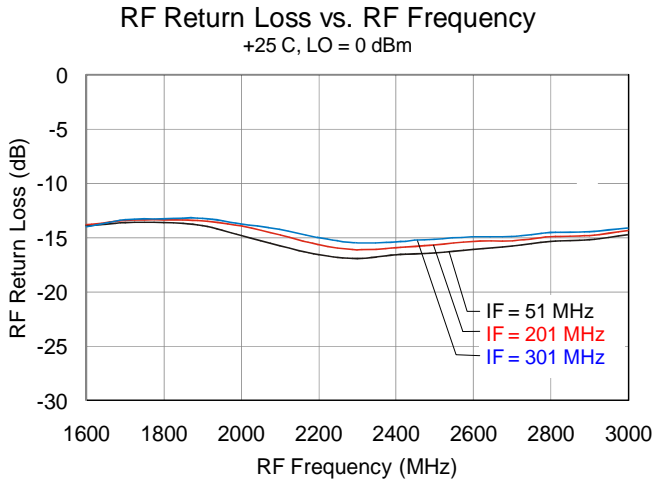
ML485

1.5-3.2 GHz High IP3 Mixer with Integrated LO Amp



ML485

1.5-3.2 GHz High IP3 Mixer with Integrated LO Amp



Spur Table

Spur tables is $N \times f_{RF} - M \times f_{LO}$ mixer spurious products for 0 dBm input power, unless otherwise noted.
RF Frequency = 1842 MHz, LO Frequency = 1642 MHz, All values in dBc relative to the IF Power Level.

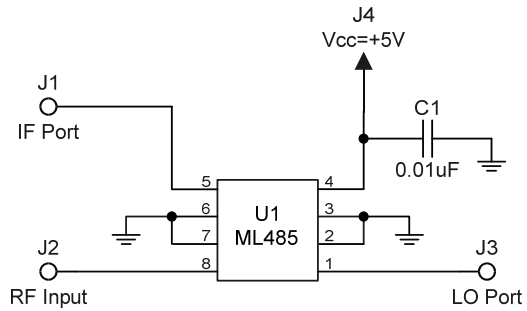
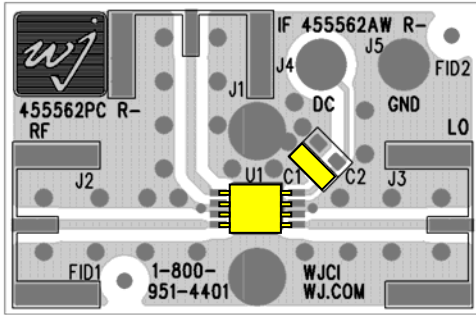
		M					
		0	1	2	3	4	5
N	0		2	22	35	18	85
	1	3	0	30	23	47	35
	2	47	81	39	51	57	70
	3	87	80	94	72	78	81
	4	95	93	91	93	88	88
	5	95	95	95	92	95	95

ML485

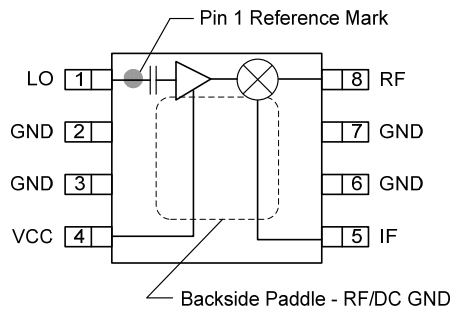
1.5-3.2 GHz High IP3 Mixer with Integrated LO Amp



Down Conversion Applications Circuit: ML485-PCB



Pin Description



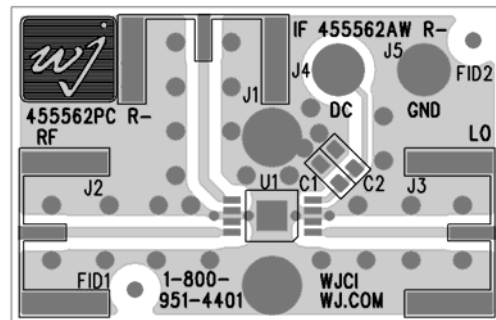
Pin	Symbol	Description
1	LO	Local Oscillator Injection. Internally DC Blocked
2, 3, 6, 7	GND	RF/DC Ground
4	Vcc	Supply voltage. An external bypass capacitor should be used near this pin.
5	IF	Intermediate Frequency
8	RF	Radio Frequency
Backside Paddle	GND	RF/DC Ground. Follow recommended via pattern and ensure good solder attach for best thermal and electrical performance.

Applications Information

PC Board Layout

Circuit Board Material: .014" FR-4, 4 layers (other layers added for rigidity), .062" total thickness, 1 oz copper
 Microstrip line details: width = .026", spacing = .025"

The pad pattern shown has been developed and tested for optimized assembly at TriQuint Semiconductor. The PCB land pattern has been developed to accommodate lead and package tolerances. Since surface mount processes vary from company to company, careful process development is recommended.



For further technical information, Refer to http://www.triquint.com/prodserv/more_info/default.aspx?prod_id=ML485

ML485

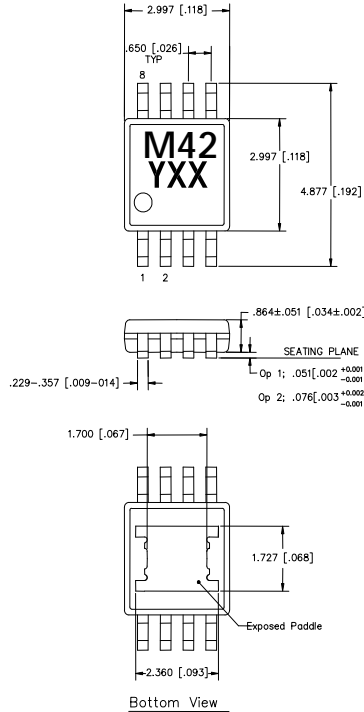
1.5-3.2 GHz High IP3 Mixer with Integrated LO Amp

Mechanical Information

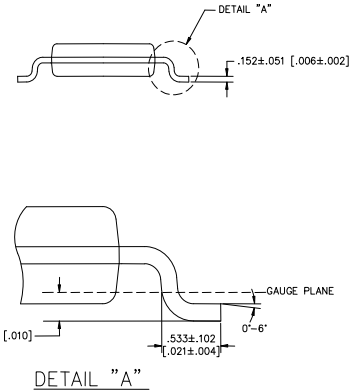
Package Information and Dimensions

This package is lead-free/green/RoHS-compliant. The plating material on the leads is 100 Percent Matte-Tin. It is compatible with both lead-free (maximum 260°C reflow temperature) and lead (maximum 245°C reflow temperature) soldering processes.

The ML485 will be marked with an “M42” designator with a lot code marked below the part designator. “Y” represents the last digit of the year the part was manufactured. “XX” is an auto-generated number.

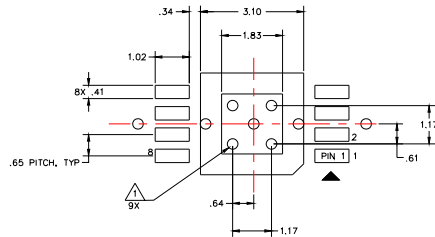
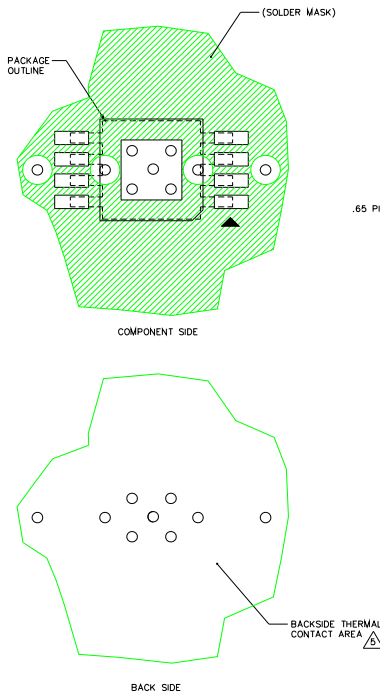


- NOTE:
- 1) ALL DIMENSIONS ARE IN MILLIMETERS [INCHES].
 - 2) PACKAGE LENGTH DOES NOT INCLUDE MOLD FLASH, PROTRUSIONS OR GATE BURR.
 - 3) PACKAGE WIDTH DOES NOT INCLUDE INTERLEAD FLASH OR PROTRUSIONS.



Mounting Configuration

All dimensions are in millimeters (inches). Angles are in degrees.



- NOTES:
1. GROUND/THERMAL VIAS ARE CRITICAL FOR THE PROPER PERFORMANCE OF THIS DEVICE. VIAS SHOULD USE A .35mm (.0135") DIAMETER DRILL AND HAVE A FINAL PLATED THRU DIAMETER OF .25mm (.010").
 2. ADD AS MUCH COPPER AS POSSIBLE TO INNER AND OUTER LAYERS NEAR THE PART TO ENSURE OPTIMAL THERMAL PERFORMANCE.
 3. TO ENSURE RELIABLE OPERATION, DEVICE GROUND PADDLE-TO-GROUND PAD SOLDER JOINT IS CRITICAL.
 4. ADD MOUNTING SCREWS NEAR THE PART TO FASTEN THE BOARD TO A HEATSINK. ENSURE THAT THE GROUND/THERMAL VIA REGION CONTACTS THE HEATSINK.
 5. FOR OPTIMAL THERMAL PERFORMANCE, EXPOSE SOLDERMASK ON BACKSIDE WHERE IT CONTACTS THE HEATSINK.
 6. RF TRACE WIDTH DEPENDS UPON THE PC BOARD MATERIAL AND CONSTRUCTION.
 7. USE 1 OZ. COPPER MINIMUM.
 8. ALL DIMENSIONS ARE IN MILLIMETERS. ANGLES ARE IN DEGREES.

ML485

1.5-3.2 GHz High IP3 Mixer with Integrated LO Amp

Product Compliance Information

ESD Information



Caution! ESD-Sensitive Device

ESD Rating: Class 0
Value: Passes/ 200 V to < 250 V
Test: Human Body Model (HBM)
Standard: JEDEC Standard JESD22-A114

ESD Rating: Class IV
Value: Passes /500V
Test: Charged Device Model (CDM)
Standard: JEDEC Standard JESD22-C101

MSL Rating

Level 2 at +260 °C convection reflow
JEDEC Standard J-STD-020

Solderability

Compatible with the latest version of J-STD-020, Lead free solder, 260°

This part is compliant with EU 2002/95/EC RoHS directive (Restrictions on the Use of Certain Hazardous Substances in Electrical and Electronic Equipment).

This product also has the following attributes:

- Lead Free
- Halogen Free (Chlorine, Bromine)
- Antimony Free
- TBBP-A (C₁₅H₁₂Br₄O₂) Free
- PFOS Free
- SVHC Free

Contact Information

For the latest specifications, additional product information, worldwide sales and distribution locations, and information about TriQuint:

Web: www.triquint.com
Email: info-sales@tqs.com

Tel: +1.503.615.9000
Fax: +1.503.615.8902

For technical questions and application information:

Email: sjcapplications.engineering@tqs.com

Important Notice

The information contained herein is believed to be reliable. TriQuint makes no warranties regarding the information contained herein. TriQuint assumes no responsibility or liability whatsoever for any of the information contained herein. TriQuint assumes no responsibility or liability whatsoever for the use of the information contained herein. The information contained herein is provided "AS IS, WHERE IS" and with all faults, and the entire risk associated with such information is entirely with the user. All information contained herein is subject to change without notice. Customers should obtain and verify the latest relevant information before placing orders for TriQuint products. The information contained herein or any use of such information does not grant, explicitly or implicitly, to any party any patent rights, licenses, or any other intellectual property rights, whether with regard to such information itself or anything described by such information.

TriQuint products are not warranted or authorized for use as critical components in medical, life-saving, or life-sustaining applications, or other applications where a failure would reasonably be expected to cause severe personal injury or death.