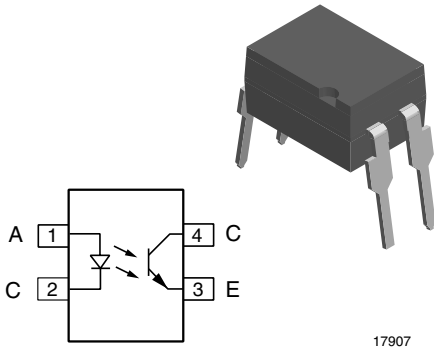


Optocoupler, Phototransistor Output, High Reliability, 5300 V_{RMS}, 110 °C Rated



DESCRIPTION

The 110 °C rated SFH617A (DIP) feature a high current transfer ratio, low coupling capacitance and high isolation voltage. These couplers have a GaAs infrared diode emitter, which is optically coupled to a silicon planar phototransistor detector, and is incorporated in a plastic DIP-4 package.

The coupling devices are designed for signal transmission between two electrically separated circuits.

The couplers are end-stackable with 2.54 mm spacing.

Creepage and clearance distances of > 8.0 mm are achieved with option 6. This version complies with IEC 60950 (DIN VDE 0805) for reinforced insulation up to an operation voltage of 400 V_{RMS} or DC. Specifications subject to change.

FEATURES

- Operating temperature from - 55 °C to + 110 °C
- Good CTR linearity depending on forward current
- Isolation test voltage, 5300 V_{RMS}
- High collector emitter voltage, V_{CEO} = 70 V
- Low saturation voltage
- Fast switching times
- Low CTR degradation
- Temperature stable
- Low coupling capacitance
- End stackable, 0.100" (2.54 mm) spacing
- High common mode interference immunity
- Lead (Pb)-free component
- Component in accordance to RoHS 2002/95/EC and WEEE 2002/96/EC



RoHS
COMPLIANT

APPLICATIONS

- AC adapter
- SMPS
- PLC
- Factory automation
- Game consoles

AGENCY APPROVALS

- UL1577, file no. E52744 system code H or J, double protection
- CSA 93751
- DIN EN 60747-5-5 (VDE 0884) available with option 1
- BSI IEC 60950; IEC 60065
- FIMKO

| ORDER INFORMATION | |
|-------------------|---------------------------------|
| PART | REMARKS |
| SFH617A-1 | CTR 40 to 80 %, DIP-4 |
| SFH617A-2 | CTR 63 to 125 %, DIP-4 |
| SFH617A-3 | CTR 100 to 200 %, DIP-4 |
| SFH617A-4 | CTR 160 to 320 %, DIP-4 |
| SFH617A-1X006 | CTR 40 to 80 %, DIP-4 400 mil |
| SFH617A-2X006 | CTR 63 to 125 %, DIP-4 400 mil |
| SFH617A-2X009 | CTR 63 to 125 %, SMD-4 |
| SFH617A-3X006 | CTR 100 to 200 %, DIP-4 400 mil |
| SFH617A-3X007 | CTR 100 to 200 %, SMD-4 |
| SFH617A-4X006 | CTR 160 to 320 %, DIP-4 400 mil |

Note

For additional information on the available options refer to option information.



Optocoupler, Phototransistor Output,
High Reliability, 5300 V_{RMS}, 110 °C
Rated

Vishay Semiconductors

| ABSOLUTE MAXIMUM RATINGS (1) | | | | |
|---|---|-------------------|--------------------|------------------|
| PARAMETER | TEST CONDITION | SYMBOL | VALUE | UNIT |
| INPUT | | | | |
| Reverse voltage | | V _R | 6 | V |
| DC forward current | | I _F | 60 | mA |
| Surge forward current | t ≤ 10 μs | I _{FSM} | 2.5 | A |
| Derate linearly from 25 °C | | | 0.95 | mW/°C |
| OUTPUT | | | | |
| Collector emitter voltage | | V _{CE} | 70 | V |
| Emitter collector voltage | | V _{EC} | 7 | V |
| Collector current | | I _C | 50 | mA |
| | t ≤ 1.0 ms | I _C | 100 | mA |
| Derate linearly from 25 °C | | | 1.54 | mW/°C |
| COUPLER | | | | |
| Isolation test voltage between emitter and detector | | V _{ISO} | 5300 | V _{RMS} |
| Isolation resistance | V _{IO} = 500 V, T _{amb} = 25 °C | R _{IO} | ≥ 10 ¹² | Ω |
| | V _{IO} = 500 V, T _{amb} = 100 °C | R _{IO} | ≥ 10 ¹¹ | Ω |
| Storage temperature range | | T _{stg} | - 55 to + 150 | °C |
| Ambient temperature range | | T _{amb} | - 55 to + 110 | °C |
| Soldering temperature (2) | max. 10 s, dip soldering distance to seating plane ≥ 1.5 mm | T _{slid} | 260 | °C |

Notes

(1) T_{amb} = 25 °C, unless otherwise specified.

Stresses in excess of the absolute maximum ratings can cause permanent damage to the device. Functional operation of the device is not implied at these or any other conditions in excess of those given in the operational sections of this document. Exposure to absolute maximum ratings for extended periods of the time can adversely affect reliability.

(2) Refer to reflow profile for soldering conditions for surface mounted devices (SMD). Refer to wave profile for soldering conditions for through hole devices (DIP).

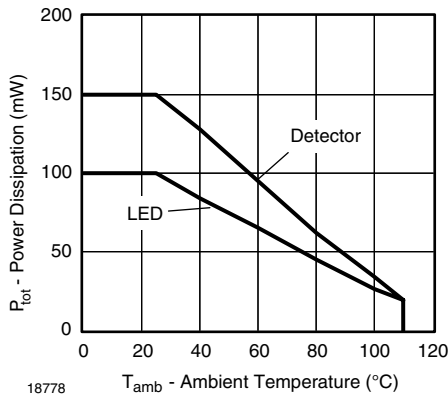
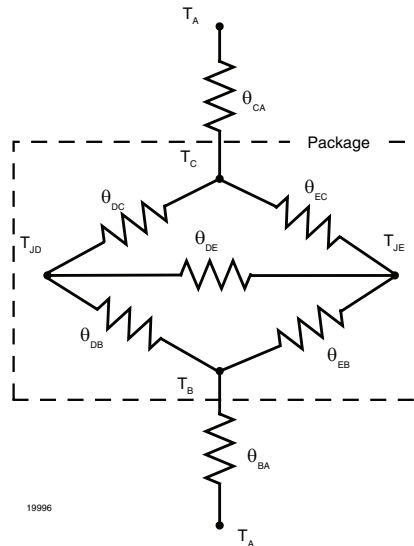


Fig. 1 - Permissible Power Dissipation vs. Ambient Temperature

| THERMAL CHARACTERISTICS (1) | | | | |
|---|----------------|-------------------|-------|------|
| PARAMETER | TEST CONDITION | SYMBOL | VALUE | UNIT |
| LED power dissipation | at 25 °C | P _{diss} | 100 | mW |
| Output power dissipation | at 25 °C | P _{diss} | 150 | mW |
| Maximum LED junction temperature | | T _{jmax} | 125 | °C |
| Maximum output die junction temperature | | T _{jmax} | 125 | °C |
| Thermal resistance, junction emitter to board | | θ _{EB} | 173 | °C/W |
| Thermal resistance, junction emitter to case | | θ _{EC} | 149 | °C/W |
| Thermal resistance, junction detector to board | | θ _{DB} | 111 | °C/W |
| Thermal resistance, junction detector to case | | θ _{DC} | 127 | °C/W |
| Thermal resistance, junction emitter to junction detector | | θ _{ED} | 95 | °C/W |
| Thermal resistance, board to ambient (2) | | θ _{BA} | 195 | °C/W |
| Thermal resistance, case to ambient (2) | | θ _{CA} | 3573 | °C/W |

Notes

- (1) The thermal model is represented in the thermal network below. Each resistance value given in this model can be used to calculate the temperatures at each node for a given operating condition. The thermal resistance from board to ambient will be dependent on the type of PCB, layout and thickness of copper traces. For a detailed explanation of the thermal model, please reference Vishay's thermal characteristics of optocouplers application note.
- (2) For 2 layer FR4 board (4" x 3" x 0.062).



| ELECTRICAL CHARACTERISTICS | | | | | | | |
|-----------------------------------|----------------------------------|-----------|------------------|------|------|------|------|
| PARAMETER | TEST CONDITION | PART | SYMBOL | MIN. | TYP. | MAX. | UNIT |
| INPUT | | | | | | | |
| Forward voltage | I _F = 60 mA | | V _F | | 1.25 | 1.65 | V |
| Reverse current | V _R = 6 V | | I _R | | 0.01 | 10 | μA |
| Capacitance | V _R = 0 V, f = 1 MHz | | C _O | | 13 | | pF |
| OUTPUT | | | | | | | |
| Collector emitter capacitance | V _{CE} = 5 V, f = 1 MHz | | C _{CE} | | 5.2 | | pF |
| Collector emitter leakage current | V _{CE} = 10 V | SFH617A-1 | I _{CEO} | | 2 | 50 | nA |
| | | SFH617A-2 | I _{CEO} | | 2 | 50 | nA |
| | | SFH617A-3 | I _{CEO} | | 5 | 100 | nA |
| | | SFH617A-4 | I _{CEO} | | 5 | 100 | nA |



Optocoupler, Phototransistor Output, Vishay Semiconductors
 High Reliability, 5300 V_{RMS}, 110 °C
 Rated

| ELECTRICAL CHARACTERISTICS | | | | | | | |
|--------------------------------------|-----------------------------------|------|--------------------|------|------|------|------|
| PARAMETER | TEST CONDITION | PART | SYMBOL | MIN. | TYP. | MAX. | UNIT |
| COUPLER | | | | | | | |
| Collector emitter saturation voltage | I _F = 10 mA, f = 1 MHz | | V _{CEsat} | 0.4 | 0.25 | | V |
| Coupling capacitance | | | C _C | | 0.4 | | pF |

Note

T_{amb} = 25 °C, unless otherwise specified.

Minimum and maximum values are testing requirements. Typical values are characteristics of the device and are the result of engineering evaluation. Typical values are for information only and are not part of the testing requirements.

| CURRENT TRANSFER RATIO | | | | | | | |
|--------------------------------|---|-----------|--------|------|------|------|------|
| PARAMETER | TEST CONDITION | PART | SYMBOL | MIN. | TYP. | MAX. | UNIT |
| I _C /I _F | I _F = 10 mA, V _{CE} = 5 V | SFH617A-1 | CTR | 40 | | 80 | % |
| | | SFH617A-2 | CTR | 63 | | 125 | % |
| | | SFH617A-3 | CTR | 100 | | 200 | % |
| | | SFH617A-4 | CTR | 160 | | 320 | % |
| | I _F = 1 mA, V _{CE} = 5 V | SFH617A-1 | CTR | 13 | 30 | | % |
| | | SFH617A-2 | CTR | 22 | 45 | | % |
| | | SFH617A-3 | CTR | 34 | 70 | | % |
| | | SFH617A-4 | CTR | 56 | 90 | | % |

| SWITCHING CHARACTERISTICS | | | | | | | |
|---------------------------|--|-----------|------------------|------|------|------|------|
| PARAMETER | TEST CONDITION | PART | SYMBOL | MIN. | TYP. | MAX. | UNIT |
| NON-SATURATED | | | | | | | |
| Turn-on time | I _F = 10 mA, V _{CC} = 5 V, R _L = 75 Ω | | t _{on} | | 3 | | μs |
| Rise time | I _F = 10 mA, V _{CC} = 5 V, R _L = 75 Ω | | t _r | | 2 | | μs |
| Turn-off time | I _F = 10 mA, V _{CC} = 5 V, R _L = 75 Ω | | t _{off} | | 2.3 | | μs |
| Fall time | I _F = 10 mA, V _{CC} = 5 V, R _L = 75 Ω | | t _f | | 2 | | μs |
| Cut-off frequency | I _F = 10 mA, V _{CC} = 5 V | | f _{ctr} | | 250 | | kHz |
| SATURATED | | | | | | | |
| Turn-on time | I _F = 20 mA | SFH617A-1 | t _{on} | | 3 | | μs |
| | I _F = 10 mA | SFH617A-2 | t _{on} | | 4.2 | | μs |
| | | SFH617A-3 | t _{on} | | 4.2 | | μs |
| | I _F = 5 mA | SFH617A-4 | t _{on} | | 6 | | μs |
| Rise time | I _F = 20 mA | SFH617A-1 | t _r | | 2 | | μs |
| | I _F = 10 mA | SFH617A-2 | t _r | | 3 | | μs |
| | | SFH617A-3 | t _r | | 3 | | μs |
| | I _F = 5 mA | SFH617A-4 | t _r | | 4.6 | | μs |
| SATURATED | | | | | | | |
| Turn-off time | I _F = 20 mA | SFH617A-1 | t _{off} | | 18 | | μs |
| | I _F = 10 mA | SFH617A-2 | t _{off} | | 23 | | μs |
| | | SFH617A-3 | t _{off} | | 23 | | μs |
| | I _F = 5 mA | SFH617A-4 | t _{off} | | 25 | | μs |
| Fall time | I _F = 20 mA | SFH617A-1 | t _f | | 11 | | μs |
| | I _F = 10 mA | SFH617A-2 | t _f | | 14 | | μs |
| | | SFH617A-3 | t _f | | 14 | | μs |
| | I _F = 5 mA | SFH617A-4 | t _f | | 15 | | μs |

| SAFETY AND INSULATION RATINGS | | | | | | |
|--|------------------------|--------|-------|-----------|------|------|
| PARAMETER | TEST CONDITION | SYMBOL | MIN. | TYP. | MAX. | UNIT |
| Climatic classification (according to IEC 68 part 1) | | | | 55/100/21 | | |
| Comparative tracking index | | CTI | 175 | | 399 | |
| V _{IOTM} | | | 10000 | | | V |
| V _{IORM} | | | 890 | | | V |
| P _{SO} | | | | | 400 | mW |
| I _{SI} | | | | | 275 | mA |
| T _{SI} | | | | | 175 | °C |
| Creepage distance | standard DIP-4 | | 7 | | | mm |
| Clearance distance | standard DIP-4 | | 7 | | | mm |
| Creepage distance | 400 mil DIP-4 | | 8 | | | mm |
| Clearance distance | 400 mil DIP-4 | | 8 | | | mm |
| Insulation thickness, reinforced rated | per IEC 60950 2.10.5.1 | | 0.4 | | | mm |

Note

As per IEC 60747-5-2, § 7.4.3.8.1, this optocoupler is suitable for "safe electrical insulation" only within the safety ratings. Compliance with the safety ratings shall be ensured by means of protective circuits.

TYPICAL CHARACTERISTICS

T_{amb} = 25 °C, unless otherwise specified

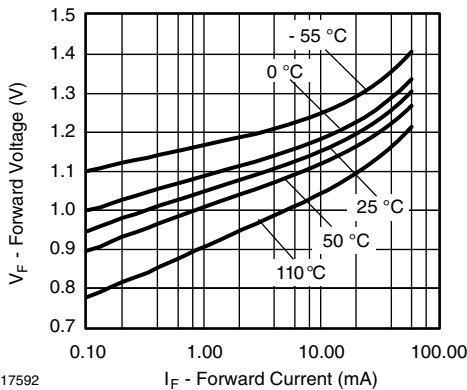


Fig. 2 - Forward Voltage vs. Forward Current

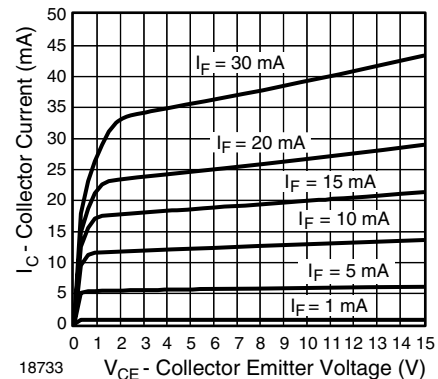


Fig. 5 - Collector Current vs. Collector Emitter Voltage

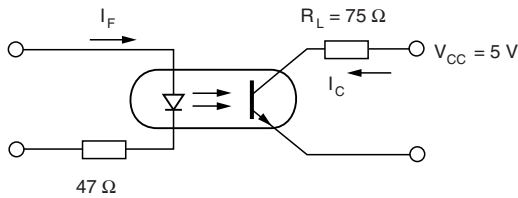


Fig. 3 - Linear Operation (without Saturation)

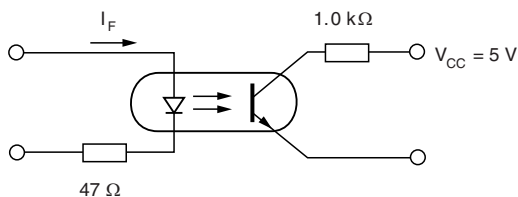


Fig. 4 - Linear Operation (with Saturation)

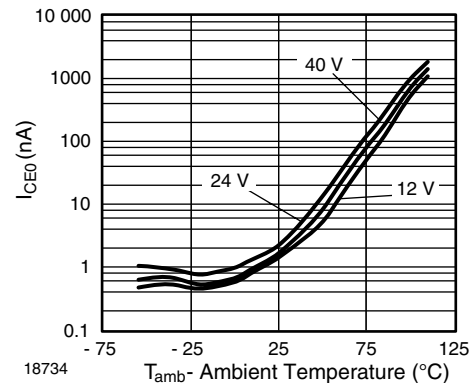


Fig. 6 - Collector to Emitter Dark Current vs. Ambient Temperature

Optocoupler, Phototransistor Output, Vishay Semiconductors
 High Reliability, 5300 V_{RMS}, 110 °C
 Rated

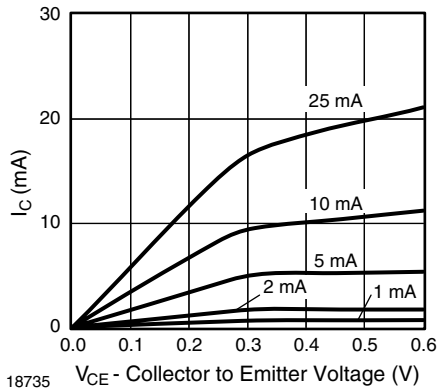


Fig. 7 - Normalized Current vs. Collector Emitter Saturation Voltage

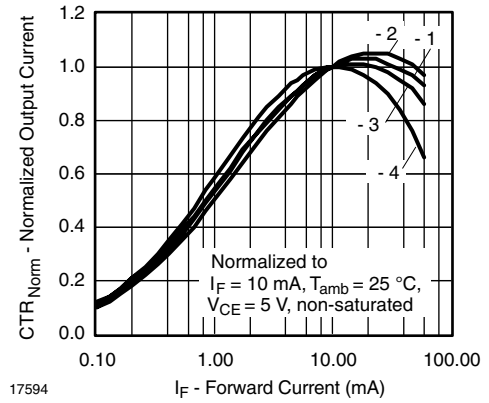


Fig. 10 - Normalized CTR vs. Forward Current

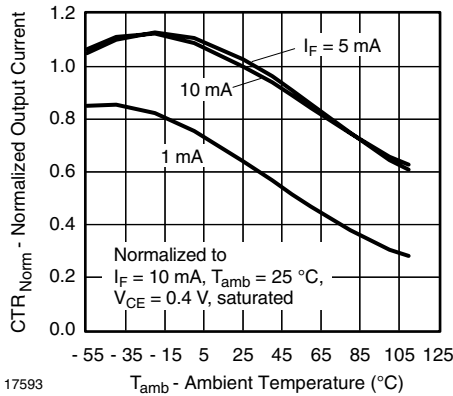


Fig. 8 - Normalized Current Transfer Ratio vs. Ambient Temperature

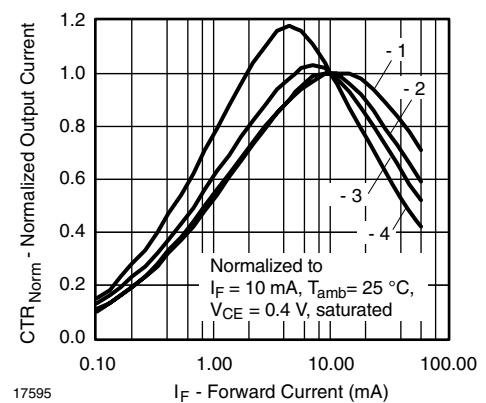


Fig. 11 - Normalized CTR vs. Forward Current

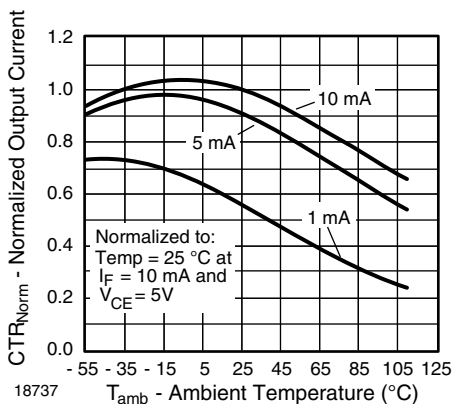


Fig. 9 - Normalized CTR vs. Temperature

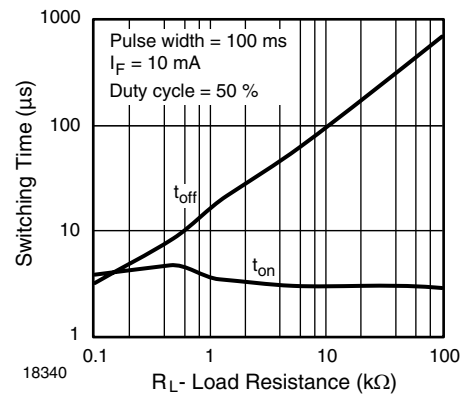


Fig. 12 - Forward Resistance vs. Forward Current

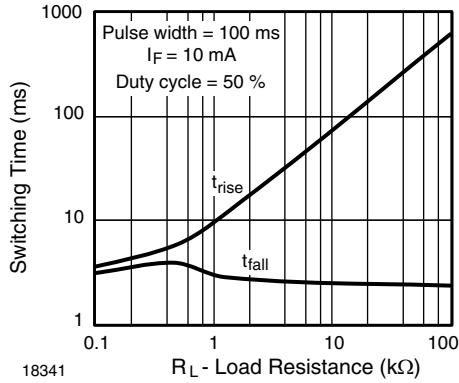
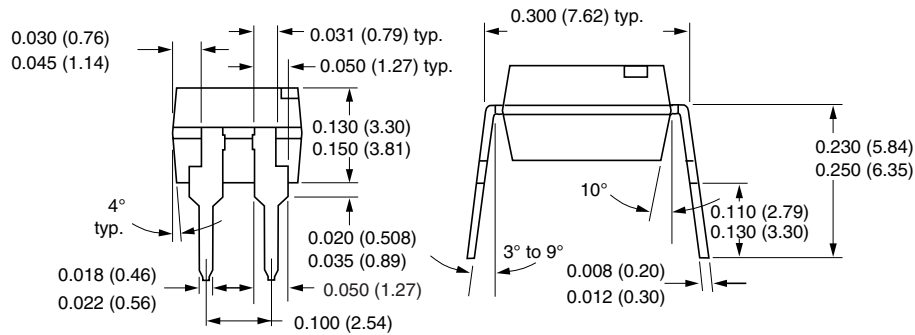
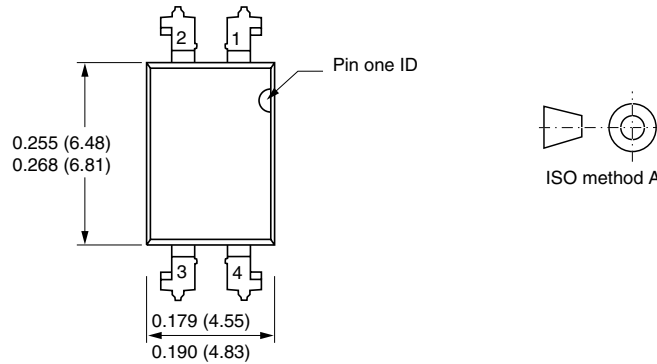
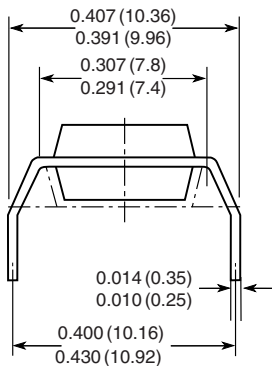


Fig. 13 - Forward Resistance vs. Forward Current

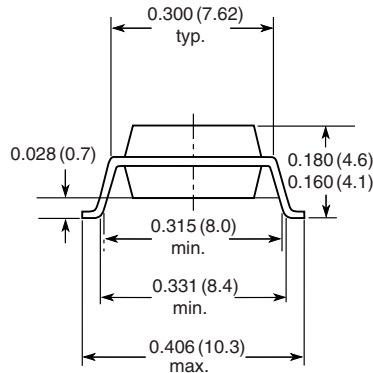
PACKAGE DIMENSIONS in inches (millimeters)



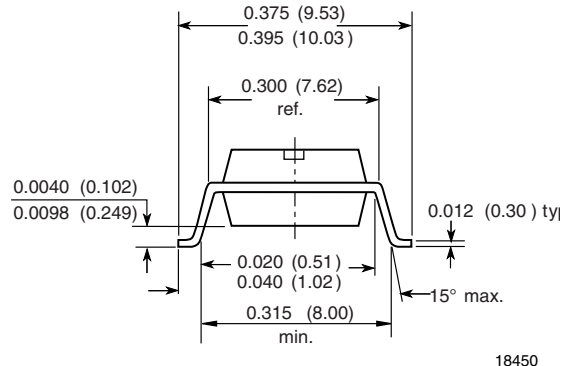
Option 6



Option 7



Option 9



18450



Optocoupler, Phototransistor Output, Vishay Semiconductors
High Reliability, 5300 V_{RMS}, 110 °C
Rated

OZONE DEPLETING SUBSTANCES POLICY STATEMENT

It is the policy of Vishay Semiconductor GmbH to

1. Meet all present and future national and international statutory requirements.
2. Regularly and continuously improve the performance of our products, processes, distribution and operating systems with respect to their impact on the health and safety of our employees and the public, as well as their impact on the environment.

It is particular concern to control or eliminate releases of those substances into the atmosphere which are known as ozone depleting substances (ODSs).

The Montreal Protocol (1987) and its London Amendments (1990) intend to severely restrict the use of ODSs and forbid their use within the next ten years. Various national and international initiatives are pressing for an earlier ban on these substances.

Vishay Semiconductor GmbH has been able to use its policy of continuous improvements to eliminate the use of ODSs listed in the following documents.

1. Annex A, B and list of transitional substances of the Montreal Protocol and the London Amendments respectively.
2. Class I and II ozone depleting substances in the Clean Air Act Amendments of 1990 by the Environmental Protection Agency (EPA) in the USA.
3. Council Decision 88/540/EEC and 91/690/EEC Annex A, B and C (transitional substances) respectively.

Vishay Semiconductor GmbH can certify that our semiconductors are not manufactured with ozone depleting substances and do not contain such substances.

We reserve the right to make changes to improve technical design
and may do so without further notice.

Parameters can vary in different applications. All operating parameters must be validated for each customer application by the customer. Should the buyer use Vishay Semiconductors products for any unintended or unauthorized application, the buyer shall indemnify Vishay Semiconductors against all claims, costs, damages, and expenses, arising out of, directly or indirectly, any claim of personal damage, injury or death associated with such unintended or unauthorized use.

Vishay Semiconductor GmbH, P.O.B. 3535, D-74025 Heilbronn, Germany



Disclaimer

All product specifications and data are subject to change without notice.

Vishay Intertechnology, Inc., its affiliates, agents, and employees, and all persons acting on its or their behalf (collectively, "Vishay"), disclaim any and all liability for any errors, inaccuracies or incompleteness contained herein or in any other disclosure relating to any product.

Vishay disclaims any and all liability arising out of the use or application of any product described herein or of any information provided herein to the maximum extent permitted by law. The product specifications do not expand or otherwise modify Vishay's terms and conditions of purchase, including but not limited to the warranty expressed therein, which apply to these products.

No license, express or implied, by estoppel or otherwise, to any intellectual property rights is granted by this document or by any conduct of Vishay.

The products shown herein are not designed for use in medical, life-saving, or life-sustaining applications unless otherwise expressly indicated. Customers using or selling Vishay products not expressly indicated for use in such applications do so entirely at their own risk and agree to fully indemnify Vishay for any damages arising or resulting from such use or sale. Please contact authorized Vishay personnel to obtain written terms and conditions regarding products designed for such applications.

Product names and markings noted herein may be trademarks of their respective owners.