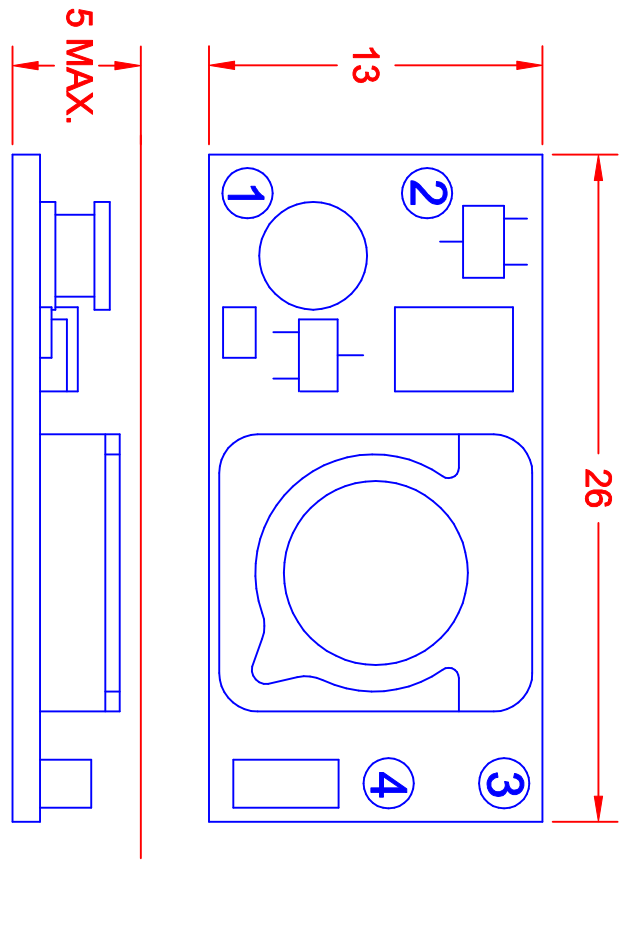
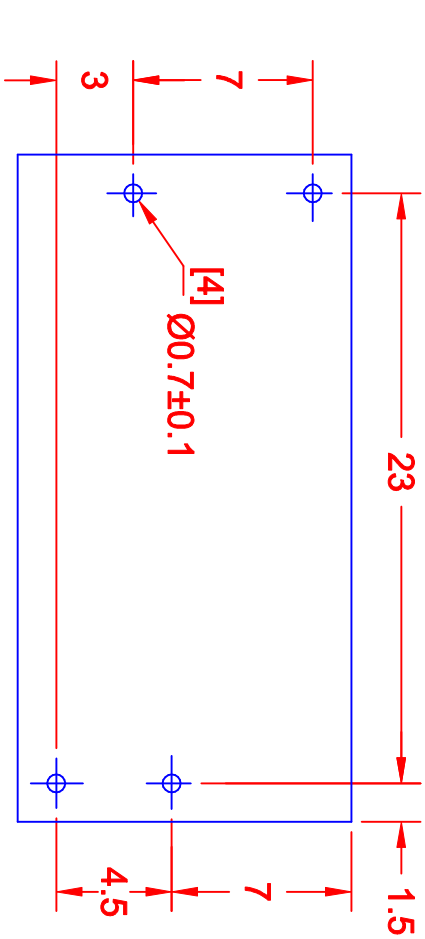


REV.	DESCRIPTION/ECO NO.	DATE
	RELEASED	8/19/97
A	WIRE DIAGRAM CHNGS	10/31/00
B	CONVERT TO CAD	6/6/01
C	ADD HOLE DIA.	3/15/02

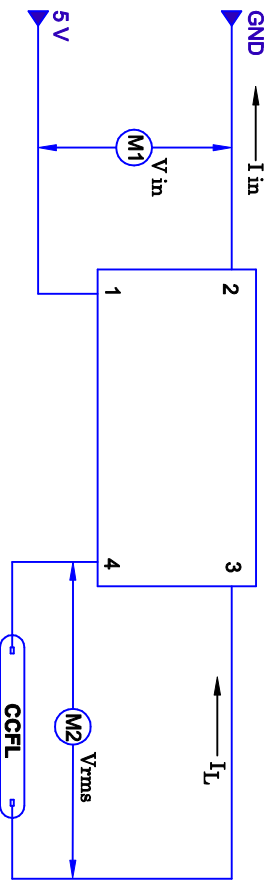


CHARACTERISTICS			
	MIN	TYP	MAX
INPUT VOLTAGE: (vdc)	4.5	5.0	5.5
INPUT CURRENT: (mA)	200	250	300
OUTPUT VOLTAGE: (Vrms)	600	650	700
OUTPUT CURRENT (maRms)	4.0	4.5	5.0
OUTPUT FREQUENCY: (KHz)	70	80	90
OPERATING TEMP: (CELSIUS)	0	25	50



BOARD PIN #	INPUT
1	+V (V in)
2	V (GND)
3	OUT GND
4	V OUT

TOLERANCE	
L < 20	±0.2
20 ≤ L < 50	±0.3
50 ≤ L < 100	±0.4
100 ≤ L	±0.5



METRIC		DIMENSIONS ARE IN MILLIMETERS	
	THIRD ANGLE PROJECTION	TOLERANCE UNLESS OTHERWISE SPECIFIED	
1 PL +/-	0.2	1 PL +/-	0.2
2 PL +/-	0	2 PL +/-	0
ANGLE +/-	0	ANGLE +/-	0
DRAWN BY L. WENGSTROM		DATE 3/15/02	
APP'D BY		DATE	
F.D.		3/15/02	
- CAD DRAWING -		SCALE A	
MANUAL REVISIONS NOT PERMITTED		NONE	
TITLE		SIZE	SCALE
JKL COMPONENTS CORPORATION		A	A
5 V CCFL POWER SUPPLY		FSCH NO.	DRAWING NO.
		55335	BXA-502
		RELEASED DATE	REVISION DATE
		8/19/97	3/15/02
		REV. NO.	SHEET OF
		C	