

# 3-terminal Filters(SMD Array) For Signal Line

Conformity to RoHS Directive

## MEA Series MEA1608L Type

### FEATURES

- 4-line LC filter are built in one chip for high-density circuit design.
- 0.5mm low profile.
- It is effective as a sensitivity suppression technique for mobile phones.
- This product is suitable for the LCD signal lines in mobile phone.

### APPLICATIONS

RGB and signal lines of data terminals, computing and communications devices, color liquid crystal displays, printers, DVDs, electronic games, portable audio-visual equipment, etc.

### TEMPERATURE RANGES

Operating	-40 to +85°C
-----------	--------------

### PRODUCT IDENTIFICATION

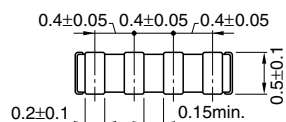
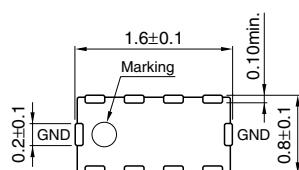
MEA	1608	L	50R0	T
(1)	(2)	(3)	(4)	(5)

- |                   |                             |
|-------------------|-----------------------------|
| (1)Series name    | (4)Capacitance (MHz)        |
| (2)Dimensions L×W | 50R0: fc=50MHz              |
| (3)L type circuit | (5)Packaging style T:Taping |

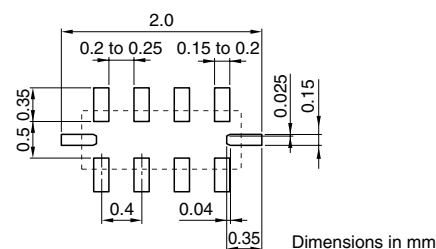
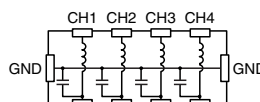
### PACKAGING STYLE AND QUANTITIES

Packaging style	Quantity
Taping	4000 pieces/reel

### SHAPES AND DIMENSIONS/CIRCUIT DIAGRAM/RECOMMENDED PC BOARD PATTERN (REFLOW)



Weight: 3.5mg  
Dimensions in mm



Dimensions in mm

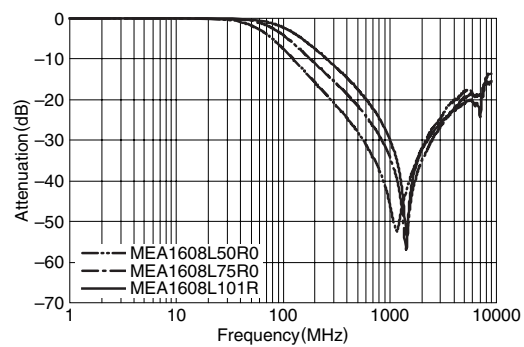
### ELECTRICAL CHARACTERISTICS

Part No.	Cutoff frequency (MHz)typ.	Attenuation 20dB frequency range (MHz)	Rated voltage (V)max.	Rated current (mA)max.
MEA1608L50R0	50	500 to 2000	6.3	100
MEA1608L75R0	75	600 to 2000	6.3	100
MEA1608L101R	100	800 to 2000	6.3	100

- Conformity to RoHS Directive: This means that, in conformity with EU Directive 2002/95/EC, lead, cadmium, mercury, hexavalent chromium, and specific bromine-based flame retardants, PBB and PBDE, have not been used, except for exempted applications.
- Please contact our Sales office when your application are considered the following:  
The device's failure or malfunction may directly endanger human life (e.g. application for automobile/aircraft/medical/nuclear power devices, etc.)

• All specifications are subject to change without notice.

### TYPICAL ELECTRICAL CHARACTERISTICS ATTENUATION vs. FREQUENCY CHARACTERISTICS



### RECOMMENDED SOLDERING CONDITION REFLOW SOLDERING

