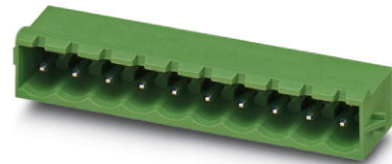


MSTBA 2,5/ 2-G-5,08-RN


Order No.: 1926015

The figure shows a 10-position version of the product

<http://eshop.phoenixcontact.de/phoenix/treeViewClick.do?UID=1926015>

Header, Nominal current: 12 A, Rated voltage (III/2): 320 V, Number of positions: 2, Pitch: 5.08 mm, Color: green, Metal surface: Sn, Assembly: Soldering, Article with engagement nose

Commercial data

| | |
|--------------------------|--|
| GTIN (EAN) |  |
| sales group | E131 |
| Pack | 50 pcs. |
| Customs tariff | 85366990 |
| Catalog page information | Page 250 (CC-2009) |

Product notes

WEEE/RoHS-compliant since:
01/01/2003

<http://www.download.phoenixcontact.com>
Please note that the data given here has been taken from the online catalog. For comprehensive information and data, please refer to the user documentation. The General Terms and Conditions of Use apply to Internet downloads.

Technical data

Dimensions / positions

| | |
|---------------------|---------|
| Length | 12 mm |
| Pitch | 5.08 mm |
| Dimension a | 5.08 mm |
| Number of positions | 2 |

| | |
|----------------|----------|
| Pin dimensions | 1 x 1 mm |
| Pin spacing | 5.08 mm |
| Hole diameter | 1.4 mm |

Technical data

| | |
|-------------------------------------|--------------------|
| Range of articles | MSTBA 2,5/...-G-RN |
| Insulating material group | IIIa |
| Rated surge voltage (III/3) | 4 kV |
| Rated surge voltage (III/2) | 4 kV |
| Rated surge voltage (II/2) | 4 kV |
| Rated voltage (III/2) | 320 V |
| Rated voltage (II/2) | 400 V |
| Connection in acc. with standard | EN-VDE |
| Nominal current I_N | 12 A |
| Nominal voltage U_N | 250 V |
| Maximum load current | 12 A |
| Insulating material | PBT |
| Inflammability class acc. to UL 94 | V0 |
| Nominal voltage, UL/CUL Use Group B | 250 V |
| Nominal current, UL/CUL Use Group B | 12 A |
| Nominal voltage, UL/CUL Use Group D | 300 V |
| Nominal current, UL/CUL Use Group D | 10 A |

Certificates / Approvals



Certification

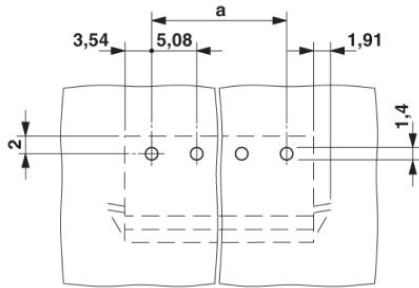
CB, CUL, GOST, UL, VDE-PZI

Accessories

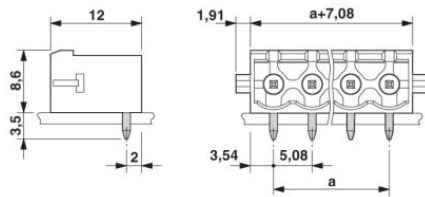
| Item | Designation | Description |
|---------------------|-------------|--|
| Plug/Adapter | | |
| 1734401 | CR-MSTB | Coding section, inserted into the recess in the header or the inverted plug, red insulating material |

Diagrams/Drawings

Drilling plan/solder pad geometry



Dimensioned drawing



Address

PHOENIX CONTACT Deutschland GmbH
Flachsmarktstr. 8
32825 Blomberg, Germany
Phone +49 5235 3 12000
Fax +49 5235 3 41200
<http://www.phoenixcontact.de>



© 2010 Phoenix Contact
Technical modifications reserved;