



Copyright FCI



FCIconnect.com



1 | 2

3

4

PRODUCT NUMBER  
20020517-XXXXXXLF

20020517-□ □ □ □ □ 0 □ L F

PITCH  
M : 7.62 mm

POLES  
02: 2 POLES  
03: 3 POLES  
04: 4 POLES  
.  
16: 16 POLES

LF : DENOTED RoHS COMPATIBLE  
1 : STANDARD PRODUCT  
W/ BOX PACKING

PROPERTY TABLE	
FCI SERIES NAME	04-762
PITCH (mm)	7.62
VOLTAGE RATING (VAC)	300
CURRENT RATING (A)	32
APPLICABLE WIRE RANGE (AWG)	1-WIRE 8~24 2-WIRE 14
WIRE CROSS SECTION (mm <sup>2</sup> )	SOLID 1-WIRE 10
	SOLID 2-WIRE 2.5
	STRANDED 1-WIRE 6
	STRANDED 2-WIRE 4
OPENING CONTACT HOUSING(mm <sup>2</sup> )	3.6x4.2
WIRE STRIP LENGTH(mm)	6~7
TORQUE +/-10% (N-m/Lb-in)	0.8/7.0
SCREW	M3.5x0.5
WITHSTANDING VOLTAGE (kV)	1.6
OPERATING TEMP. (°C)	-40~+115
POLES AVAILABLE	02~16
SAFETY CERTIFICATE	

SCREW CODE

CODE	SCREW TYPE	AVAILABILITY
A	-/+	ON REQUEST ONLY
B	-	STANDARD

ALL FLANGE SCREWS ARE ONLY AVAILABLE IN +/- COMBINATION SCREW TYPES.

HOUSING CODE

CODE	COLOR	AVAILABILITY
1	GREEN(RAL 6018/T)	STANDARD
2	BLACK	ON REQUEST ONLY
3	GREY(RAL 7004/P)	ON REQUEST ONLY
4	BLUE(RAL 5015/A)	ON REQUEST ONLY

NOTES:

- MATERIALS
  - 1-1 HOUSING: THERMALPLASTIC RESIN, UL 94V-0 RATED.
  - 1-2 SCREW: STEEL, ZINC PLATED.
  - 1-3 CLAMP: COPPER ALLOY, NICKEL PLATED.
  - 1-4 TERMINAL: COPPER ALLOY, TIN PLATED.
  - 1-5 WIRE GUARD: STAINLESS STEEL.
- PRODUCTION SPECIFICATION REFER TO FCI GS-12-625.
- BOXED PACKAGING.
  - DETAILED PRODUCT PACKING SPECIFICATION REFER TO FCI GS-14-1394.
- FCI, SAFETY CERTIFICATE LOGO AND SERIES NAME TO BE SHOWN ON PRODUCT SURFACE.
- THE PRODUCTS WHERE THE PART NUMBER END IN "LF" MEET THE EUROPEAN UNION DIRECTIVE AND OTHER COUNTRY REGULATIONS AS DESCRIBED IN GS-22-008.

mat'l. code		surface	tolerance	projection	product family
		ASME Y14.5	ASME Y14.5		TERMINAL BLOCK
itr	ecn no	dr	date	tolerances unless otherwise specified	title
A	T10-0029	JH	011810	X.±0.5	TERMINAL BLOCK
B	T10-0062	WL	050710	X.X±0.3	PLUGGABLE, POWER, PLUG, W/FLANGE
C	T10-0123	WL	080310	X'±1"	scale
D	T10-0155	WL	093010	JASON HSU 011810	FCI logo
E	T10-0187	WL	121410	enrg JASON HSU 011810	FCI logo
				chr GARY HSIEH 011810	
				appd JOSEPH HSIA 011810	
sheet index	revision sheet	E	E		
		1	2		

form: A4mmXLc

1 |

2

PDM: Rev:E 3 | STATUS:Released Printed: Dec 22, 2010 4



Copyright FCI



FCIconnect.com

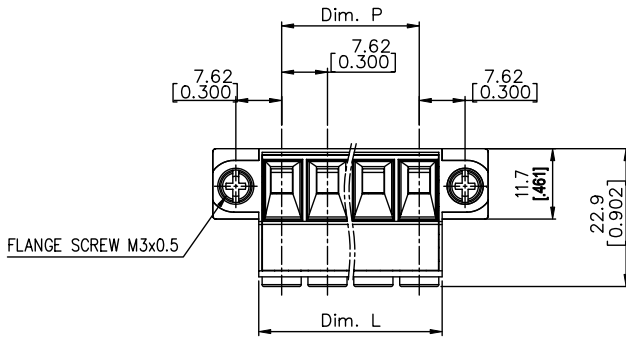


1 | 2

3

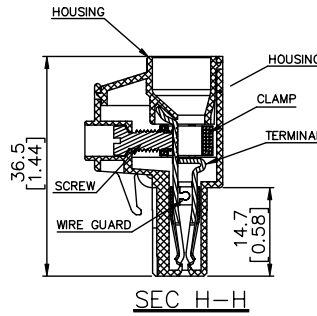
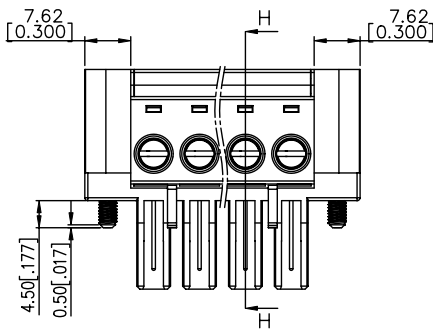
4

PRODUCT NUMBER	SERIES NAME	PITCH
20020517-MXXXXXXLF	04-762	7.62 mm



N = Number of poles  
 Dim L = N x 7.62 [0.300]  
 Dim P = (N - 1) x 7.62 [0.300]

TOL.	Dim L	Dim P
2p	±0.10 [0.004]	
3-4p	±0.15 [0.006]	
5-8p	±0.20 [0.008]	
9-12p	±0.30 [0.012]	
13-16p	±0.40 [0.016]	



mat'l. code	surface ASME Y14.5	tolerance ASME Y14.5	projection	product family TERMINAL BLOCK
ltr	ecn	no	dr	date
E				
	angles	tolerances unless otherwise specified	MM [INCH]	title TERMINAL BLOCK PLUGGABLE, POWER, PLUG, W/FLANGE
	X±1°	X.±0.5 X.X±0.3 X.XX±0.1	scale	dwg no 20020517
	dr	JASON HSU	011810	sheet 2 of 2 size A4
	enr	JASON HSU	011810	
	chr	GARY HSIEH	011810	
	appd	JOSEPH HSIA	011810	type CUSTOMER Drawing
sheet index	revision sheet			

form: A4mmXLc

1

2

PDM: Rev: E 3 | STATUS: Released | Printed: Dec 22, 2010 4