

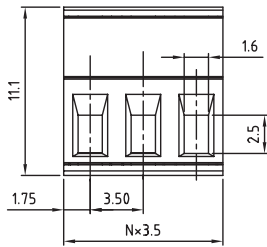
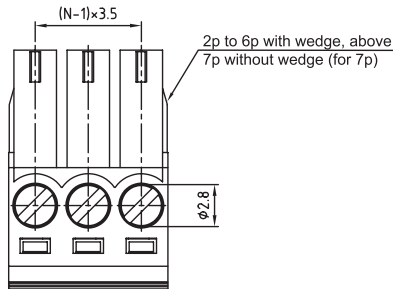
1

2

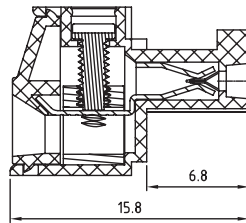
3

4

5



N=Number of contacts



TECHNICAL CHARACTERISTICS

MATERIAL  
 INSULATOR: PA 66  
 FLAMABILITY RATING: UL94-V0  
 COLOR: GREEN  
 METAL HOUSING: BRASS (CuZn)  
 TERMINAL SCREW: STEEL ZINC PLATING  
 TERMINAL SCREW SLOT TYPE: "-"  
 WIRE GUARD: PhBz TIN PLATED

ENVIRONMENTAL  
 OPERATING TEMPERATURE: -40 UP TO 105°C  
 COMPLIANCE: LEAD FREE AND ROHS

|                       |        |             |
|-----------------------|--------|-------------|
| ELECTRICAL            | cULus  | VDE         |
| CURRENT RATING:       | 10A    | 10.5A       |
| WORKING VOLTAGE:      | 300VAC | 300VAC      |
| WITHSTANDING VOLTAGE: | 1.6KV  | 2.5KV       |
| CONTACT RESISTANCE:   | □      | 20 mOhm max |

MECHANICAL  
 SOLID WIRE: 26-16 AWG / 0.13-1.5MM<sup>2</sup>  
 STRANDED WIRE: 26-16 AWG / 0.13-1.5MM<sup>2</sup>  
 TORQUE: 3.0Lb-In / 0.34Nm

WIRE STRIPE LENGTH: 6-7MM  
 SCREW: M2.0  
 PITCH: 3.5MM

PACKAGING: BOX

SERIE 3611

CERTIFICATION



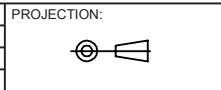
A

B

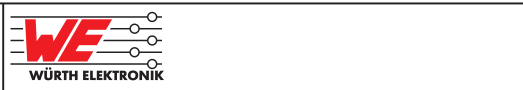
C

RoHS Compliant

|     |           |      |    |
|-----|-----------|------|----|
| G   |           |      |    |
| F   |           |      |    |
| E   |           |      |    |
| D   |           |      |    |
| C   |           |      |    |
| B   |           |      |    |
| A   | 31-OCT-08 | PDF  | JP |
| REV | DATE      | FILE | BY |



GENERAL TOLERANCE  
 .X = +/\_ 0.2  
 .XX = +/\_ 0.15



APPROVAL: RJ

UNIT: MM  
 SCALE:  
 SHEET: 1/1  
 DRAW: MARVIN

DESCRIPTION: SERIE 3611 - 3.50MM VERTICAL CABLE ENTRY PLUG  
 1.5MM<sup>2</sup> WIRES WR-TBL  
 WERI PART NO: 691 361 100 0xx

SIZE  
**A4**

D