

Copyright FCI



FCIconnect.com

1 | 2

3 |

4

PRODUCT NUMBER
20020011-XXXXXXLF

20020011 — □ □ □ □ □ 0 □ L F

PITCH

C: 3.50 mm
D: 3.81 mm
G: 5.00 mm
H: 5.08 mm



POLES

02: 2 POLES
03: 3 POLES
04: 4 POLES
:
:
:
24: 24 POLES

LF: NOTED RoHS COMPATIBLE

1: STANDARD PRODUCT
W/ BOX PACKING

PROPERTY TABLE

PROPERTY TABLE						
FCI SERIES NAME		02-350	02-381	02-500	02-508	
PITCH (mm)		3.50	3.81	5.00	5.08	
VOLTAGE RATING (VAC)		300	300	300	300	
CURRENT RATING (A)	cULus	8	8	12	12	
	VDE	10	10	NA	NA	
APPLICABLE WIRE RANGE (AWG)	1-WIRE	16~28	16~28	12~24	12~24	
	2-WIRE	20	20	18	18	
WIRE CROSS SECTION (mm ²)	SOLID	1-WIRE	1.5	1.5	2.5	
		2-WIRE	0.5	0.5	1.0	1.0
	STRANDED	1-WIRE	1.5	1.5	2.5	2.5
		2-WIRE	0.75	0.75	1.5	1.5
OPENING CONTACT HOUSING(mm ²)		2.8x1.7	2.8x1.7	2.6x3.3	2.6x3.3	
WIRE STRIP LENGTH(mm)		6~7	6~7	6~7	6~7	
TORQUE +/-~10% (N-m/Lb-in)		0.19/1.7	0.19/1.7	0.4/3.5	0.4/3.5	
WITHSTANDING VOLTAGE (kV)	SCREW	M2x0.4	M2x0.4	M3x0.5	M3x0.5	
	cULus	1.6	1.6	1.6	1.6	
OPERATING TEMP. (°C)	VDE	2.5	2.5	NA	NA	
		-40~+115	-40~+115	-40~+115	-40~+115	
POLES AVAILABLE		02~24	02~24	02~24	02~24	
SAFETY CERTIFICATE						

SCREW CODE

CODE	SCREW TYPE	AVAILABILITY
A	-/+	ON REQUEST ONLY
B	-	STANDARD

ALL FLANGE SCREWS ARE ONLY AVAILABLE IN +/-
COMBINATION SCREW TYPES.

HOUSING CODE

CODE	COLOR	AVAILABILITY
1	GREEN(RAL 6018/T)	STANDARD
2	BLACK	ON REQUEST ONLY
3	GREY(RAL 7004/P)	ON REQUEST ONLY
4	BLUE(RAL 5015/A)	ON REQUEST ONLY

NOTES:

1. MATERIALS
1-1 HOUSING: THERMALPLASTIC RESIN, UL 94V-0 RATED.
1-2 SCREW: STEEL, ZINC PLATED.
1-3 CLAMP: COPPER ALLOY, NICKEL PLATED.
1-4 TERMINAL: COPPER ALLOY, TIN PLATED.
2. PRODUCT SPECIFICATION REFER TO FCI GS-12-625.
3. PRODUCT PACKING SPECIFICATION REFER TO FCI GS-14-1394.
4. FCI, SAFETY CERTIFICATE LOGO AND SERIES NAME TO BE SHOWN ON PRODUCT SURFACE.
5. THE PRODUCTS WHERE THE PART NUMBER END IN "LF" MEET THE EUROPEAN UNION DIRECTIVE AND OTHER COUNTRY REGULATIONS AS DESCRIBED IN GS-22-008.

mat'l. code				surface	tolerance	projection	product family
				ASME Y14.5	ASME Y14.5		TERMINAL BLOCK
ltr	ecn	no	dr	date			title
A	T10-0082	WL	080510	090310			TERMINAL BLOCK
B	T10-0140	WL	090310	100410			PLUGGABLE PLUG, BACK SIDE HOOK, W/FLANGE
C	T10-0158	WL	100410	040811			dwg no
D	T11-0013	WL	040811	dr	WENDY CHEN	051810	sheet 1 of 5
				enr	JASON HSU	051810	size
				chr	GARY HSIEH	051810	A4
				app	JOSEPH HSIA	051810	type
sheet	revision	D	D	D	D	D	CUSTOMER Drawing
index	sheet	1	2	3	4	5	

form: A4mmXLC

1 |

2 |

PDM: Rev:D 3 | STATUS Released Printed: Apr 21, 2011 4

N = Number of poles
Dim A = $N \times 3.50$ [138]
Dim B = $(N - 1) \times 3.50$ [138]

Technical drawing of the 2P-6P connector, showing front and side views with dimensions in mm.

Front View Dimensions:

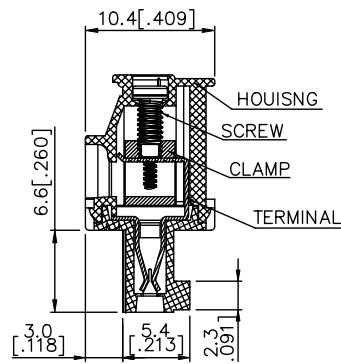
- Overall width: 19.3 [1.760]
- Distance from left edge to center of first pin: 4.3 [.169]
- Distance between pins: 3.5 [.138]
- Distance from center of last pin to right edge: 4.8 [.189]
- Pin diameter: 2.8 [.110]
- Pin pitch (center-to-center): 2.5 [.100]
- Pin height: 7.0 [.276]
- Flange screw hole diameter: 5.8 [.228]
- Flange screw hole pitch: 2.3 [.091]





Side View Dimensions:

- Overall height: 19.3 [1.760]
- Distance from bottom edge to center of first pin: 4.3 [.169]
- Distance between pins: 3.5 [.138]
- Distance from center of last pin to top edge: 4.8 [.189]
- Pin diameter: 2.8 [.110]
- Pin pitch (center-to-center): 2.5 [.100]
- Pin height: 7.0 [.276]
- Flange screw hole diameter: 5.8 [.228]
- Flange screw hole pitch: 2.3 [.091]

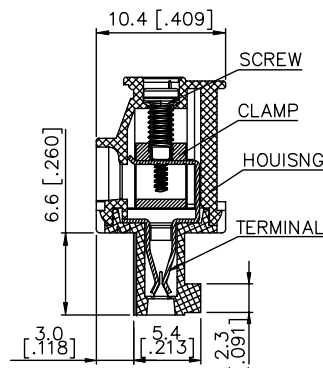
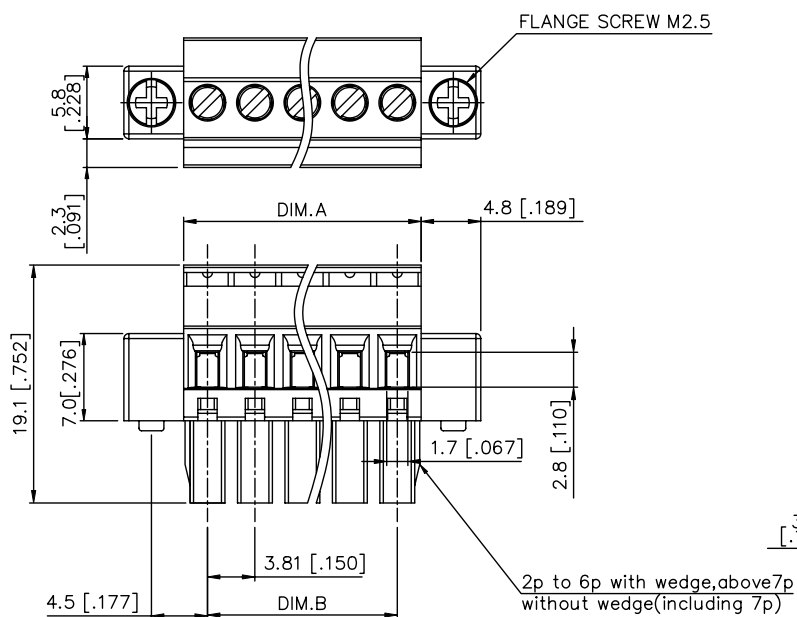
Labels:


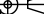
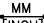
- DIM.A: Overall width of the connector body.
- DIM.B: Overall height of the connector body.
- FLANGE SCREW M2.5: Label for the flange screw.
- 2p to 6p with wedge, abc without wedge(including): Label for the pin configuration.



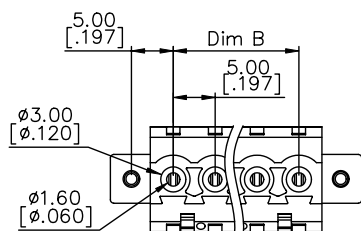
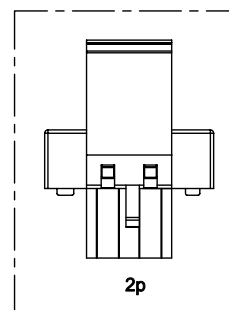
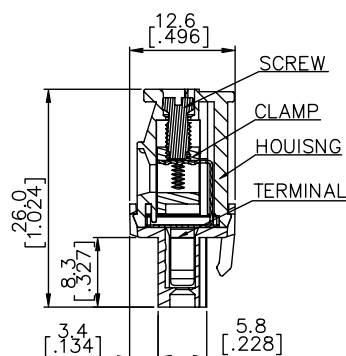
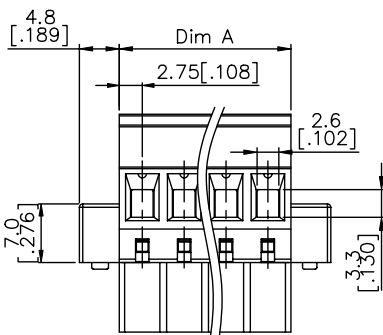
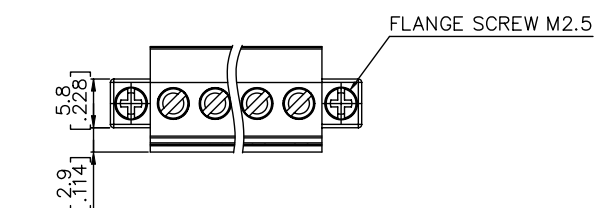
mat'l. code				surface ASME Y14.5 ✓		tolerance ASME Y14.5		projection 		product family TERMINAL BLOCK					
itr ecn no dr date				tolerances unless otherwise specified								title			
D				angles 		X.±0.5				TERMINAL BLOCK					
						X.X±0.3		MM [INCH]		PLUGGABLE PLUG, BACK SIDE HOOK, W/FLANGE					
				X'±1"		X.XX±0.1		scale		dwg no sheet 2 of 5 size					
				dr WENDY CHEN 051810						20020011 A4					
				engr JASON HSU 051810						CUSTOMER Drawing					
				chr GARY HSIEH 051810											
				apdd JOSEPH HSIA 051810											
sheet index		revision sheet													


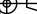

poles	Dim A	Dim B
2-6P	$\pm 0.15[.006]$	$\pm 0.15[.006]$
7-12p	$\pm 0.20[.008]$	$\pm 0.20[.008]$
13-17p	$\pm 0.25[.010]$	$\pm 0.25[.010]$
18-24p	$\pm 0.30[.012]$	$\pm 0.30[.012]$



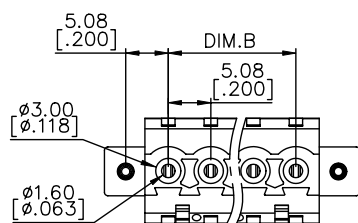
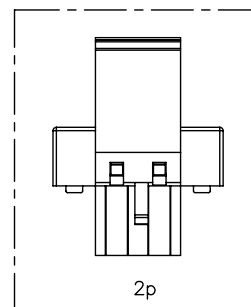
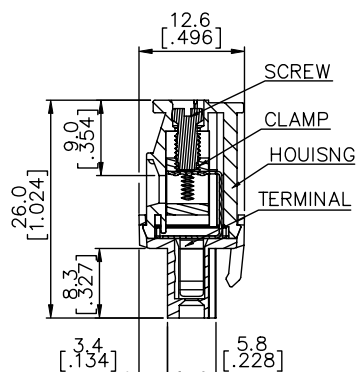
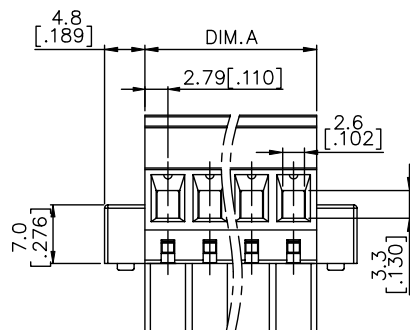
mat'l. code				surface ASME Y14.5		tolerance ASME Y14.5				product family TERMINAL BLOCK			
ltr	ecn	no	dr	date	tolerances unless otherwise specified				title				
D					angles <div><div>0.5</div><div>1</div><div>inch</div></div>	X.±0.5			TERMINAL BLOCK				
				X.X±0.3		PLUGGABLE PLUG, BACK SIDE HOOK,							
				X'±1"		W/FLANGE							
						X.XX±0.1		scale	dwg no				
			dr	WENDY CHEN	051810				sheet 3 of 5		size		
			engr	JASON HSU	051810				20020011		A4		
			chr	GARY HSIEH	051810								
			appd	JOSEPH HSIA	051810								
sheet index		revision sheet								type		CUSTOMER Drawing	






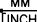
poles	Dim A	Dim B
2–6p	$\pm 0.15[.006]$	$\pm 0.15[.006]$
7–12p	$\pm 0.20[.008]$	$\pm 0.20[.008]$
13–18p	$\pm 0.30[.012]$	$\pm 0.30[.012]$
19–24p	$\pm 0.40[.016]$	$\pm 0.40[.016]$



mat'l. code					surface ASME Y14.5		tolerance ASME Y14.5		projection 		product family TERMINAL BLOCK					
ltr	ecn	no	dr	date	tolerances unless otherwise specified							title				
D					angles	ϕ	$X \pm 0.5$			TERMINAL BLOCK						
						in	$X.X \pm 0.3$	MM		PLUGGABLE PLUG, BACK SIDE HOOK,						
					$X' \pm 1"$		$X.XX \pm 0.1$	[FINCH]		W/FLANGE						
					dr	WENDY CHEN	051810			scale		dwg no				
					engr	JASON HSU	051810			sheet 4 of 5		size				
					chr	GARY HSIEH	051810			20020011		A4				
					appd	JOSEPH HSIA	051810									
sheet		revision														
index		sheet														

poles	Dim A	Dim B
2-6p	$\pm 0.15[.006]$	$\pm 0.15[.006]$
7-12p	$\pm 0.20[.008]$	$\pm 0.20[.008]$
13-18p	$\pm 0.30[.012]$	$\pm 0.30[.012]$
19-24p	$\pm 0.40[.016]$	$\pm 0.40[.016]$



mat'l. code				surface ASME Y14.5		tolerance ASME Y14.5		projection 		product family TERMINAL BLOCK			
ltr	ecn	no	dr	date	tolerances unless otherwise specified				title				
D					angles		X.±0.5			TERMINAL BLOCK			
						X.X±0.3			PLUGGABLE PLUG, BACK SIDE HOOK, W/FLANGE				
					X'±1"	X.XX±0.1	scale		dwg no				
dr	WENDY CHEN			051810					sheet 5 of 5		size		
engr	JASON HSU			051810					20020011		A4		
chr	GARY HSIEH			051810									
appd	JOSEPH HSIA			051810									
sheet index	revision sheet								type		CUSTOMER Drawing		