



Copyright FCI



FCIconnect.com



1 | 2

3 |

4

PRODUCT NUMBER
20020003-XXXXXXLF

20020003-□ □ □ □ □ ○ □ LF

PITCH
G: 5.00mm
H: 5.08mm

POLES
02: 2 POLES
03: 3 POLES
04: 4 POLES
24: 24 POLES

LF : DENOTED RoHS COMPATIBLE

1 : STANDARD PRODUCT
W/ BOX PACKING

SCREW CODE

CODE	SCREW TYPE	AVAILABILITY
A	-/+	ON REQUEST ONLY
B	-	STANDARD

ALL FLANGE SCREWS ARE ONLY AVAILABLE IN +/- COMBINATION SCREW TYPES.

PROPERTY TABLE			
FCI SERIES NAME		01-500	01-508
PITCH (mm)		5.00	5.08
VOLTAGE RATING (VAC)		300	300
CURRENT RATING (A)		12	12
APPLICABLE WIRE RANGE (AWG)		1-WIRE 12~24 2-WIRE 18	12~24 18
WIRE CROSS SECTION (mm ²)	SOLID	1-WIRE 2.5 2-WIRE 1.0	2.5 1.0
	STRANDED	1-WIRE 2.5 2-WIRE 1.5	2.5 1.5
OPENING CONTACT HOUSING(mm ²)		2.6x3.2	2.6x3.2
WIRE STRIP LENGTH(mm)		7~8	7~8
TORQUE +/-10% (N-m/Lb-in)		0.57/5.0	0.57/5.0
SCREW		M3x0.5	M3x0.5
WITHSTANDING VOLTAGE (kV)		1.6	1.6
OPERATING TEMP. (°C)		-40~+115	-40~+115
POLES AVAILABLE		02~24	02~24
SAFETY CERTIFICATE			

HOUSING CODE

CODE	COLOR	AVAILABILITY
1	GREEN(RAL 6018/T)	STANDARD
2	BLACK	ON REQUEST ONLY
3	GREY(RAL 7004/P)	ON REQUEST ONLY
4	BLUE(RAL 5015/A)	ON REQUEST ONLY

NOTES:

- MATERIALS
 - HOUSING: THERMALPLASTIC RESIN, UL 94V-0 RATED.
 - SCREW AND FLANGE SCREW: STEEL, ZINC PLATED.
 - CLAMP: COPPER ALLOY, NICKEL PLATED.
 - TERMINAL: COPPER ALLOY, TIN PLATED.
- PRODUCT SPECIFICATION REFER TO FCI GS-12-625.
- BOXED PACKAGING, DETAILED PRODUCT PACKING SPECIFICATION REFER TO FCI GS-14-1394.
- FCI, SAFETY CERTIFICATE LOGO AND SERIES NAME TO BE SHOWN ON PRODUCT SURFACE.
- THE PRODUCTS WHERE THE PART NUMBER END IN "LF" MEET THE EUROPEAN UNION DIRECTIVE AND OTHER COUNTRY REGULATIONS AS DESCRIBED IN GS-22-008.

mat'l. code	surface ASME Y14.5	tolerance ASME Y14.5	projection	product family
ltr	ecn no	dr	date	tolerances unless otherwise specified
A	T10-0062	WL	050710	angles $\frac{B}{E}$ X.±0.5
B	T10-0127	WL	080910	X.X±0.3
C	T10-0155	WL	093010	X'±1" X.XX±0.1
D	T10-0187	WL	121410	dr WENDY CHEN 042310
				enrg JASON HSU 042310
				chr GARY HSIEH 042310
				appd JOSEPH HSIA 042310
sheet index	revision sheet	D 1	D 2	D 3



product family TERMINAL BLOCK
title TERMINAL BLOCK PLUGGABLE, PLUG, SIGNAL, W/FLANGE CONTACT UP SIDE
dwg no 20020003 sheet 1 of 3 size A4
type CUSTOMER Drawing

form: A4mmXLc

1 |

2 |

PDM: Rev:D 3 | STATUS:Released Printed: Dec 22, 2010 4



Copyright FCI



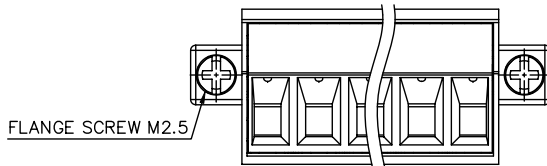
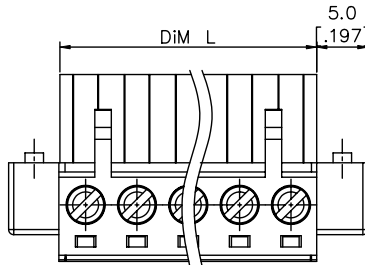
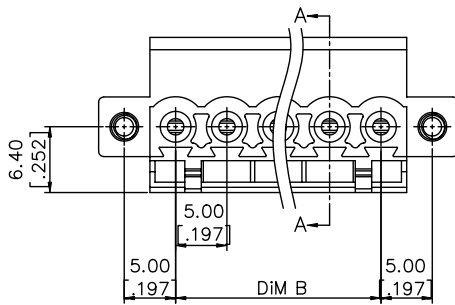
FCIconnect.com

1 | 2

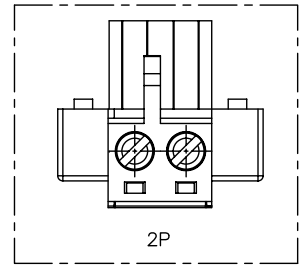
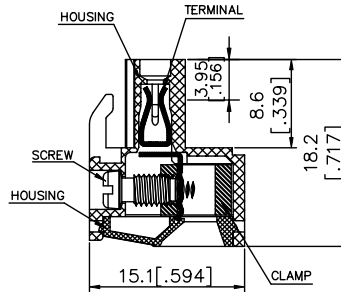
3

4

PRODUCT NUMBER	SERIES NAME	PITCH
20020003-GXXXXXL	01-500	5.00 mm



Poles	02	03	04	05	06	07	08	09	10	11	12	13
Dim L	10.00 [.394]	15.00 [.591]	20.00 [.787]	25.00 [.984]	30.00 [1.181]	35.00 [1.378]	40.00 [1.575]	45.00 [1.772]	50.00 [1.969]	55.00 [2.165]	60.00 [2.362]	65.00 [2.559]
Dim B	5.00 [.197]	10.00 [.394]	15.00 [.591]	20.00 [.787]	25.00 [.984]	30.00 [1.181]	35.00 [1.378]	40.00 [1.575]	45.00 [1.772]	50.00 [1.969]	55.00 [2.165]	60.00 [2.362]
TOL	±0.15 [.006]			±0.20 [.008]				±0.25 [.010]				
Poles	14	15	16	17	18	19	20	21	22	23	24	
Dim L	70.00 [2.756]	75.00 [2.953]	80.00 [3.150]	85.00 [3.346]	90.00 [3.543]	95.00 [3.740]	100.00 [3.937]	105.00 [4.134]	110.00 [4.330]	115.00 [4.528]	120.00 [4.724]	
Dim B	65.00 [2.559]	70.00 [2.756]	75.00 [2.953]	80.00 [3.150]	85.00 [3.346]	90.00 [3.543]	95.00 [3.740]	100.00 [3.937]	105.00 [4.134]	110.00 [4.330]	115.00 [4.528]	
TOL	±0.25 [.010]		±0.30 [.012]				±0.40 [.016]					



mat'l. code	surface ASME Y14.5 ✓ ASME Y14.5	tolerance X.±0.5 X.X±0.3 X.XX±0.1	projection MM [INCH] scale	product family TERMINAL BLOCK					
ltr	ecn	no	dr	date	tolerances unless otherwise specified	title TERMINAL BLOCK PLUGGABLE, PLUG, SIGNAL, W/FLANGE CONTACT UP SIDE	dwg no 20020003	sheet 2 of 3	size A4
D					angles D X±1°	FCI logo	type CUSTOMER Drawing		
			dr	WENDY CHEN	042310				
			enr	JASON HSU	042310				
			chr	GARY HSIEH	042310				
			appd	JOSEPH HSIA	042310				
sheet index	revision sheet								

form: A4mmXLc

1 |

2

PDM: Rev:D 3 | STATUS:Released Printed: Dec 22, 2010 4



Copyright FCI



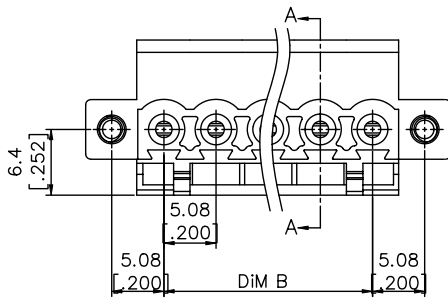
FCIconnect.com

1 | 2

3

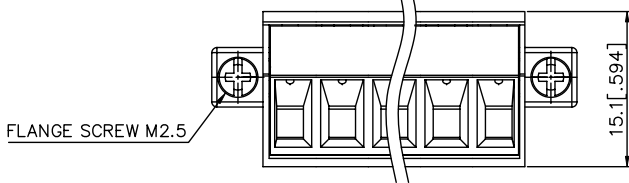
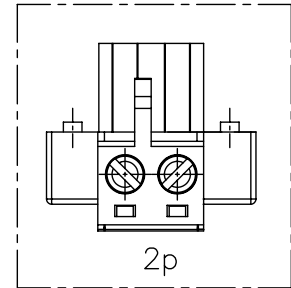
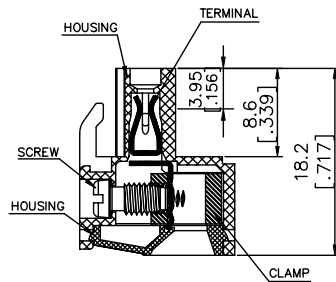
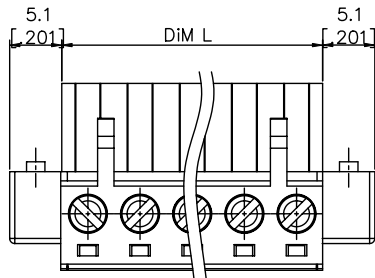
4

PRODUCT NUMBER	SERIES NAME	PITCH
20020003-HXXXXXL	01-508	5.08 mm



Poles	02	03	04	05	06	07	08	09	10	11	12	13
Dim L	10.16 [0.400]	15.24 [0.600]	20.32 [0.800]	25.40 [1.000]	30.48 [1.200]	35.56 [1.400]	40.64 [1.600]	45.72 [1.800]	50.80 [2.000]	55.88 [2.200]	60.96 [2.400]	66.04 [2.600]
Dim B	5.08 [0.200]	10.16 [0.400]	15.24 [0.600]	20.32 [0.800]	25.40 [1.000]	30.48 [1.200]	35.56 [1.400]	40.64 [1.600]	45.72 [1.800]	50.80 [2.000]	55.88 [2.200]	60.96 [2.400]
TOL	±0.15 [0.006]				±0.20 [0.008]				±0.25 [0.010]			

Poles	14	15	16	17	18	19	20	21	22	23	24	
Dim L	71.12 [2.800]	76.20 [3.000]	81.28 [3.200]	86.36 [3.400]	91.44 [3.600]	96.52 [3.800]	101.60 [4.000]	106.68 [4.200]	111.76 [4.400]	116.84 [4.600]	121.92 [4.800]	
Dim B	66.04 [2.600]	71.12 [2.800]	76.20 [3.000]	81.28 [3.200]	86.36 [3.400]	91.44 [3.600]	96.52 [3.800]	101.60 [4.000]	106.68 [4.200]	111.76 [4.400]	116.84 [4.600]	
TOL	±0.25 [0.010]			±0.30 [0.012]			±0.40 [0.016]					



mat'l. code	surface ASME Y14.5	tolerance ASME Y14.5	projection	product family
ltr	ecn	no	dr	date
D	tolerances unless otherwise specified			title
	angles	X.±0.5	MM	TERMINAL BLOCK
		X.X±0.3	[INCH]	PLUGGABLE, PLUG, SIGNAL, W/FLANGE
	X'±1'	X.XX±0.1	scale	CONTACT UP SIDE
	dr	WENDY CHEN	042310	dwg no
	enr	JASON HSU	042310	sheet 3 of 3
	chr	GARY HSIEH	042310	size
	appd	JOSEPH HSIA	042310	20020003
sheet index	revision sheet			A4
				type
				CUSTOMER Drawing

form: A4mmXLc

1 |

2

PDM: Rev:D 3 | STATUS:Released Printed: Dec 22, 2010 4