

## PT 1,5/ 2-PH-5,0 CLIP

Order No.: 1755732

<http://eshop.phoenixcontact.de/phoenix/treeViewClick.do?UID=1755732>

Plug component, Nominal current: 10 A, Rated voltage (III/2): 400 V,  
Number of positions: 2, Pitch: 5 mm, Color: green, Metal surface: Sn

### Commercial data

|                          |                     |
|--------------------------|---------------------|
| GTIN (EAN)               | 4046356334914       |
| sales group              | E402                |
| Pack                     | 250 pcs.            |
| Customs tariff           | 85366990            |
| Weight/Piece             | 0.0023 KG           |
| Catalog page information | Page 187 (NTK-2010) |

<http://www.download.phoenixcontact.com>  
Please note that the data given here has been taken from the online catalog. For comprehensive information and data, please refer to the user documentation. The General Terms and Conditions of Use apply to Internet downloads.

### Technical data

#### Dimensions / positions

|                        |         |
|------------------------|---------|
| Pitch                  | 5 mm    |
| Dimension a            | 5 mm    |
| Number of positions    | 2       |
| Tightening torque, min | 0.35 Nm |
| Tightening torque max  | 0.4 Nm  |

#### Technical data

|                           |                   |
|---------------------------|-------------------|
| Range of articles         | PT 1,5/..-PH CLIP |
| Insulating material group | I                 |

|                                     |                     |
|-------------------------------------|---------------------|
| Rated surge voltage (III/3)         | 4 kV                |
| Rated surge voltage (III/2)         | 4 kV                |
| Rated surge voltage (II/2)          | 4 kV                |
| Rated voltage (III/2)               | 400 V               |
| Rated voltage (II/2)                | 630 V               |
| Connection in acc. with standard    | EN-VDE              |
| Nominal current $I_N$               | 10 A                |
| Nominal voltage $U_N$               | 250 V               |
| Nominal cross section               | 1.5 mm <sup>2</sup> |
| Maximum load current                | 10 A                |
| Insulating material                 | PA                  |
| Inflammability class acc. to UL 94  | V0                  |
| Stripping length                    | 6 mm                |
| Nominal voltage, UL/CUL Use Group B | 300 V               |
| Nominal current, UL/CUL Use Group B | 5 A                 |
| Nominal voltage, UL/CUL Use Group D | 300 V               |
| Nominal current, UL/CUL Use Group D | 5 A                 |

**Connection data**

|  |                      |
|--|----------------------|
| Conductor cross section solid min.   | 0.2 mm <sup>2</sup>  |
| Conductor cross section solid max.   | 1.5 mm <sup>2</sup>  |
| Conductor cross section stranded min.                                      | 0.2 mm <sup>2</sup>  |
| Conductor cross section stranded max.                                      | 1.5 mm <sup>2</sup>  |
| Conductor cross section stranded, with ferrule without plastic sleeve min. | 0.25 mm <sup>2</sup> |
| Conductor cross section stranded, with ferrule without plastic sleeve max. | 1 mm <sup>2</sup>    |
| Conductor cross section stranded, with ferrule with plastic sleeve min.    | 0.25 mm <sup>2</sup> |
| Conductor cross section stranded, with ferrule with plastic sleeve max.    | 1 mm <sup>2</sup>    |
| Conductor cross section AWG/kcmil min.                                     | 26                   |
| Conductor cross section AWG/kcmil max                                      | 14                   |
| Minimum AWG according to UL/CUL  | 28                   |
| Maximum AWG according to UL/CUL  | 14                   |

**Certificates / Approvals**



Certification

CUL, UL

**CUL**

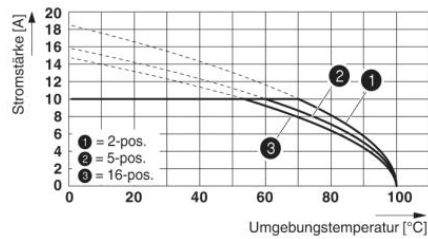
|                       |       |
|-----------------------|-------|
| Nominal voltage $U_N$ | 300 V |
| Nominal current $I_N$ | 5 A   |
| AWG/kcmil             | 28-14 |

**UL**

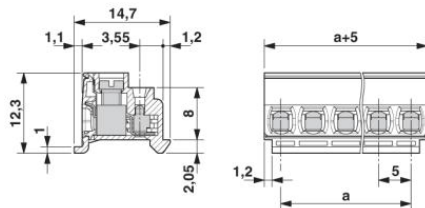
|                       |       |
|-----------------------|-------|
| Nominal voltage $U_N$ | 300 V |
| Nominal current $I_N$ | 5 A   |
| AWG/kcmil             | 28-14 |

**Diagrams/Drawings**

Diagram



Dimensioned drawing



**Address**

PHOENIX CONTACT Inc., USA  
586 Fulling Mill Road  
Middletown, PA 17057, USA  
Phone (800) 888-7388  
Fax (717) 944-1625  
<http://www.phoenixcon.com>



© 2010 Phoenix Contact  
Technical modifications reserved;