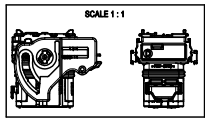


71	MAT SEAL	Silicon	GREEN
72	BACK GRID 24W	-PBT-GF20+	COLOR LINKED TO LINE CLOSED
73	LOCKING LEVER 32W	-PBT-GF30+	BLACK
74	SECONDARY LOCK	-PBT-GF20+	GREEN
75	PERIPHERAL SEAL 32W	Silicon	BLUE
76	BACK PART	-PBT-GF20+	BLACK
77	FRONT PART	-PBT-GF20+	COLOR LINKED TO KEYING
78	POS.	DERIVATION	MATERIAL
79			COLOR

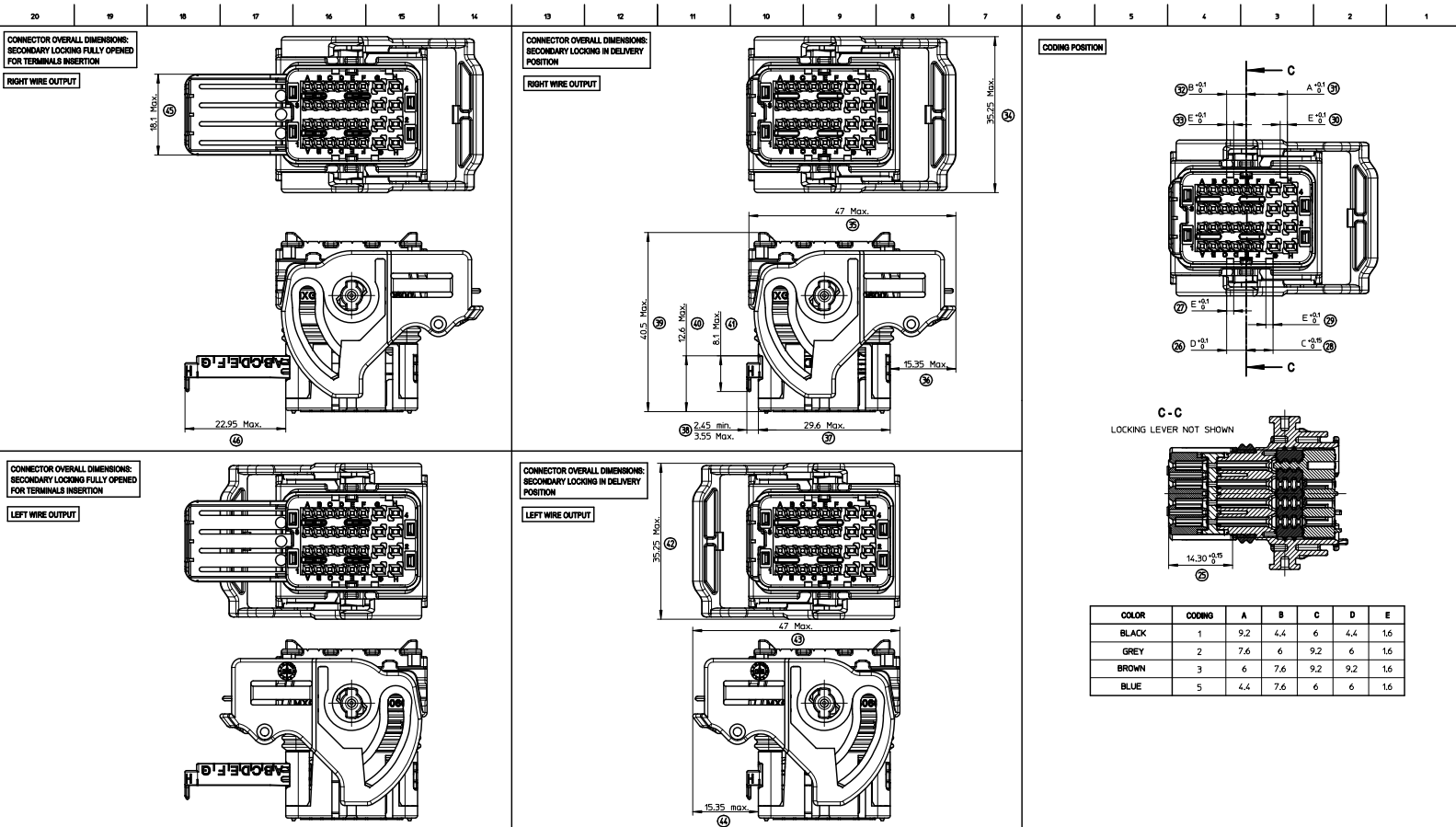
MARKINGS :

- Assembled part traceability: Day + Year
- Terminal cavities identification
- Lever position indicator:
 - 'D' LETTER VISIBLE = part with "LEVER ON THE RIGHT"
 - 'G' LETTER VISIBLE = part with "LEVER ON THE LEFT"
- Supplier identification
- Material identification



- NOTES:**
- 1-FOR ILLUSTRATION PURPOSE THE FEMALE HOUSING SHOWN IS THE RIGHT WIRE OUTPUT VERSION CODING 1
 - 2-APPLICATION SPECIFICATION: AS-64319-001
 - 3-WIRES EXTERNAL DIAMETER USED:
FOR CP04 TERMINAL: USE WIRES WITH AN EXTERNAL DIAMETER BETWEEN Ø1250µm MIN AND Ø1500µm MAX
FOR CP15 TERMINAL: USE WIRES WITH AN EXTERNAL DIAMETER BETWEEN Ø1400µm MIN AND Ø2800µm MAX
 - 4-THE CONNECTOR FITS WITH WIRE CAP (32 WAY) MOLEX P/N 0643191201
 - 5-BLIND PLUG FOR 06 AND 15 CAVITIES MOLEX P/N 0643251010 AND 0643251020 MUST BE USED ON THIS PART.
 - 6-DELIVERED PRODUCT WEIGHT: 27.6 g

UPDATED DRAWING DEC. NO. 2008/05/23 D. BOUCHAN C. BOUCHAN REV. DESCRIPTION	GENERAL TOLERANCES (UNLESS SPECIFIED) 4 PLACES ± 0.15 3 PLACES ± 0.10 2 PLACES ± 0.05 1 PLACE ± 0.02 ANGULAR ± 2°	DIMENSION STYLE MM ONLY DRAWN BY: T. BADAROUX CHECKED BY: DANIE P. GRANDCLAUD APPROVED BY: C. BOUCHAN DATE: 2008/05/23	SCALE: 2.5:1 DESIGN UNITS: METRIC FIRST ANGLE PROJECTION CMC CONNECTOR 24 WAY MAT SEAL VERSION MOLEX INCORPORATED
	DRAFT WHERE APPLICABLE MUST REMAIN WITHIN DIMENSIONS		SHEET 2 OF 2 SEE SHEET 2 THIS DRAWING CONTAINS INFORMATION THAT IS PROPRIETARY TO MOLEX INCORPORATED AND SHOULD NOT BE USED WITHOUT WRITTEN PERMISSION
	MATERIAL NO. 0643192211 DOCUMENT NO. SD-64319-003		SHEET NO. 1 OF 2
	MOLEX INCORPORATED		



COLOR	CODING	A	B	C	D	E
BLACK	1	9.2	4.4	6	4.4	1.6
GREY	2	7.6	6	9.2	6	1.6
BROWN	3	6	7.6	9.2	9.2	1.6
BLUE	5	4.4	7.6	6	6	1.6

TERMINALS USED

CATEGORY	TERMINAL (pitch mm)	PLATING	MOLEX P/N	min / MAX WIRE INSULATION DIAMETER (mm)
A1 to F1 A2 to F2 A3 to F3 A4 to F4	CP 0.6 0.5mm2	Tin plated	0643221019	Ø125 min / Ø140 Max
		Gold plated	0643221229	
	CP 0.6 0.5mm2	Tin plated	0643221039	Ø140 min / Ø170 Max
		Gold plated	0643221239	
G1 to H4 G1 to H4	CP 1.5 0.5mm2 to 1mm2	Tin plated	0643221029	Ø160 min / Ø190 Max
		Gold plated	0643221219	
G1 to H4 G1 to H4	CP 1.5 >1mm2 to 2mm2	Tin plated	0643231029	Ø140 min / Ø215 Max
		Gold plated	0643231219	Ø2.10 min / Ø2.80 Max

UPDATED DRAWING
 LEV. N° 1
 D: DRINGER/SERRES 2008/04/04
 CHIKOC, BOUCHAN
 APPR: [REDACTED]

GENERAL TOLERANCES (UNLESS SPECIFIED)

PLACES	mm	INCH
4 PLACES	± 0.1	± 0.004
3 PLACES	± 0.15	± 0.006
2 PLACES	± 0.2	± 0.008
1 PLACE	± 0.3	± 0.012

ANGULAR ± 2°

DRAFT WHERE APPLICABLE MUST REMAIN WITHIN DIMENSIONS

MOLEX INCORPORATED
 SD-64319-003

THIS DRAWING CONTAINS INFORMATION THAT IS PROPRIETARY TO MOLEX INCORPORATED AND SHOULD NOT BE USED WITHOUT WRITTEN PERMISSION