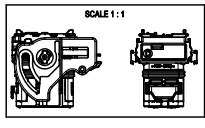


71	MAT SEAL	Silicon	GREEN
72	BACK GRID 24W	-PBT-GF20+	COLOR LINKED TO LINE CLOSED
73	LOCKING LEVER 32W	-PBT-GF30+	BLACK
74	SECONDARY LOCK	-PBT-GF20+	GREEN
75	PERIPHERAL SEAL 32W	Silicon	BLUE
76	BACK PART	-PBT-GF20+	BLACK
77	FRONT PART	-PBT-GF20+	COLOR LINKED TO KEYING
78	POS.	DERIVATION	MATERIAL
79			COLOR

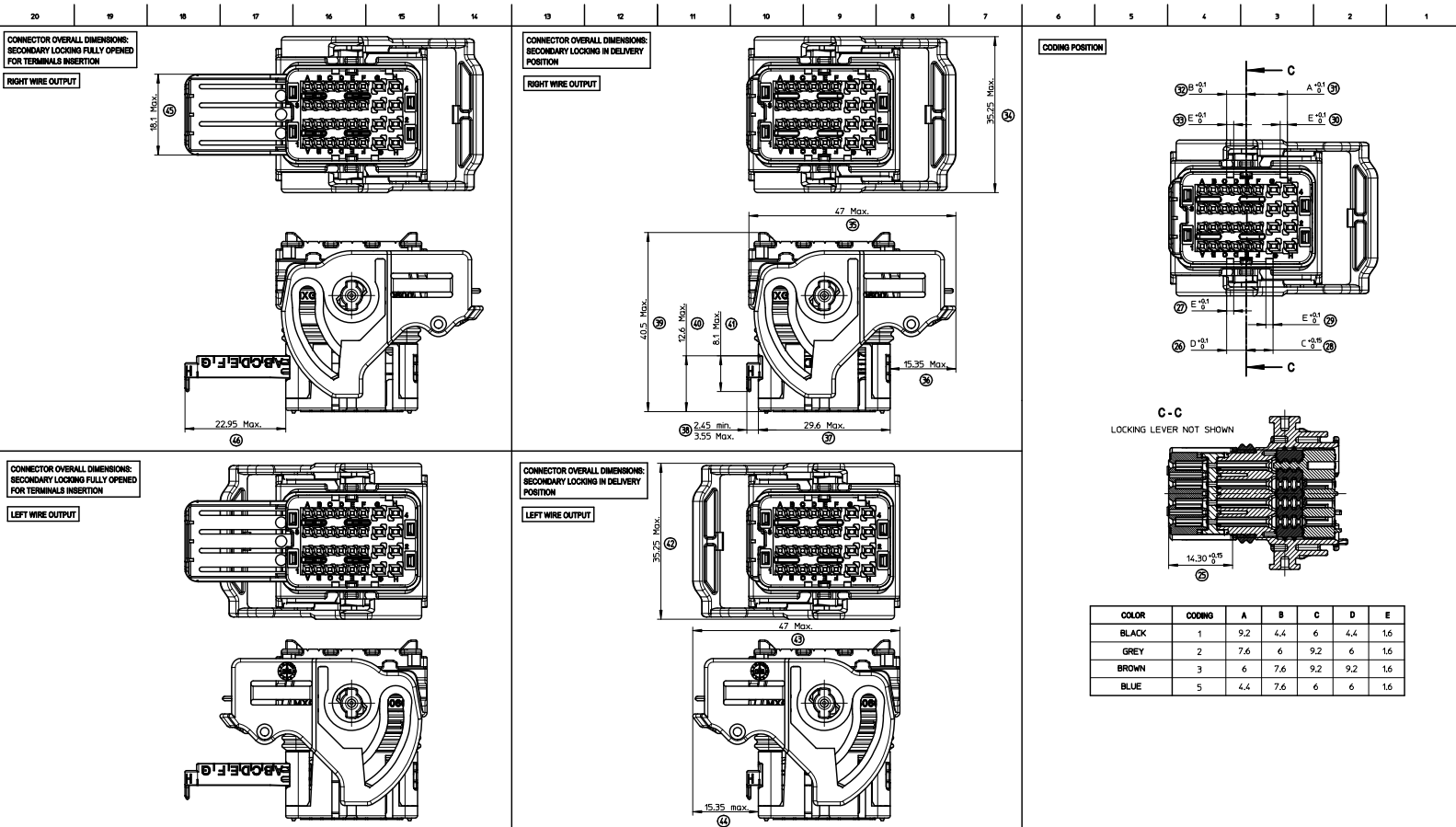
**MARKINGS :**

- Assembled part traceability: Day + Year
- Terminal cavities identification
- Lever position indicator: 'D' LETTER VISIBLE = part with 'LEVER ON THE RIGHT' 'G' LETTER VISIBLE = part with 'LEVER ON THE LEFT'
- Supplier identification
- Material identification



- NOTES:**
- FOR ILLUSTRATION PURPOSE THE FEMALE HOUSING SHOWN IS THE RIGHT WIRE OUTPUT VERSION CODING 1
  - APPLICATION SPECIFICATION: AS-64319-001
  - WIRES EXTERNAL DIAMETER USED:  
FOR CP04 TERMINAL: USE WIRES WITH AN EXTERNAL DIAMETER BETWEEN Ø1250µm MIN AND Ø1500µm MAX  
FOR CP15 TERMINAL: USE WIRES WITH AN EXTERNAL DIAMETER BETWEEN Ø1400µm MIN AND Ø2800µm MAX
  - THE CONNECTOR FITS WITH WIRE CAP (32 WAY) MOLEX P/N 0643191201
  - BLIND PLUG FOR 06 AND 15 CAVITIES MOLEX P/N 0643251010 AND 0643251020 MUST BE USED ON THIS PART.
  - DELIVERED PRODUCT WEIGHT: 27.6 g

UPDATED DRAWING DEC. NO. 2008/05/23 D. BOUCHAN C. BOUCHAN REV. DESCRIPTION	GENERAL TOLERANCES (UNLESS SPECIFIED) 4 PLACES ± 0.15 3 PLACES ± 0.1 2 PLACES ± 0.1 1 PLACE ± 0.1 ANGULAR ± 2°	DIMENSION STYLE MM ONLY	SCALE 2.5:1	DESIGN UNITS METRIC	FIRST ANGLE PROJECTION	
	DRAWN BY: T. BADAROUX CHECKED BY: DANIE APPROVED BY: P. GRANDCLAUD DATE: 2008/05/23	DATE: 2008/05/23	TITLE CMC CONNECTOR 24 WAY MAT SEAL VERSION	MOLEX INCORPORATED	MOLEX INCORPORATED	SHEET NO. 1 OF 2
	DRAFT WHERE APPLICABLE MUST REMAIN WITHIN DIMENSIONS	SEE SHEET 2	DOCUMENT NO. SD-64319-003	MOLEX INCORPORATED	MOLEX INCORPORATED	SHEET NO. 1 OF 2
	THIS DRAWING CONTAINS INFORMATION THAT IS PROPRIETARY TO MOLEX INCORPORATED AND SHOULD NOT BE USED WITHOUT WRITTEN PERMISSION	THIS DRAWING CONTAINS INFORMATION THAT IS PROPRIETARY TO MOLEX INCORPORATED AND SHOULD NOT BE USED WITHOUT WRITTEN PERMISSION	THIS DRAWING CONTAINS INFORMATION THAT IS PROPRIETARY TO MOLEX INCORPORATED AND SHOULD NOT BE USED WITHOUT WRITTEN PERMISSION	THIS DRAWING CONTAINS INFORMATION THAT IS PROPRIETARY TO MOLEX INCORPORATED AND SHOULD NOT BE USED WITHOUT WRITTEN PERMISSION	THIS DRAWING CONTAINS INFORMATION THAT IS PROPRIETARY TO MOLEX INCORPORATED AND SHOULD NOT BE USED WITHOUT WRITTEN PERMISSION	THIS DRAWING CONTAINS INFORMATION THAT IS PROPRIETARY TO MOLEX INCORPORATED AND SHOULD NOT BE USED WITHOUT WRITTEN PERMISSION



COLOR	CODING	A	B	C	D	E
BLACK	1	9.2	4.4	6	4.4	1.6
GREY	2	7.6	6	9.2	6	1.6
BROWN	3	6	7.6	9.2	9.2	1.6
BLUE	5	4.4	7.6	6	6	1.6

**TERMINALS USED**

CATEGORY	TERMINAL (pitch mm)	PLATING	MOLEX P/N	min / MAX WIRE INSULATION DIAMETER (mm)
A1 to F1 A2 to F2 A3 to F3 A4 to F4	CP 0.6 0.5mm2	Tin plated	0643221019	Ø125 min / Ø140 Max
		Gold plated	0643221229	
	CP 0.6 0.5mm2	Tin plated	0643221039	Ø140 min / Ø170 Max
		Gold plated	0643221239	
G1 to H4 G1 to H4	CP 1.5 0.5mm2 to 1mm2	Tin plated	0643221029	Ø160 min / Ø190 Max
		Gold plated	0643221219	
G1 to H4 G1 to H4	CP 1.5 >1mm2 to 2mm2	Tin plated	0643231029	Ø140 min / Ø215 Max
		Gold plated	0643231219	Ø210 min / Ø280 Max

**UPDATED DRAWING**  
 ED: M. A. L. P. AM.F  
 2008/04/15  
 D: CHIKOC, BOUCHAN  
 APPR: [REDACTED]

**GENERAL TOLERANCES (UNLESS SPECIFIED)**

	mm	INCH
4 PLACES	± 0.1	± 0.004
3 PLACES	± 0.15	± 0.006
2 PLACES	± 0.2	± 0.008
1 PLACE	± 0.3	± 0.012

ANGULAR ± 2°

**DRAFT WHERE APPLICABLE MUST REMAIN WITHIN DIMENSIONS**

**MOLEX INCORPORATED**  
 SD-64319-003  
 SHEET NO. 2 OF 2