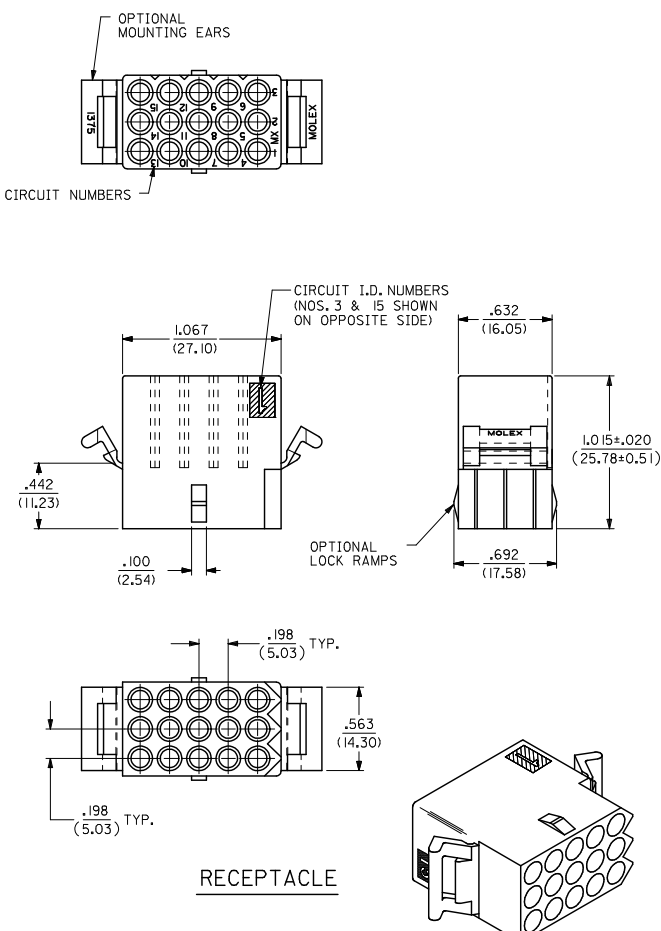
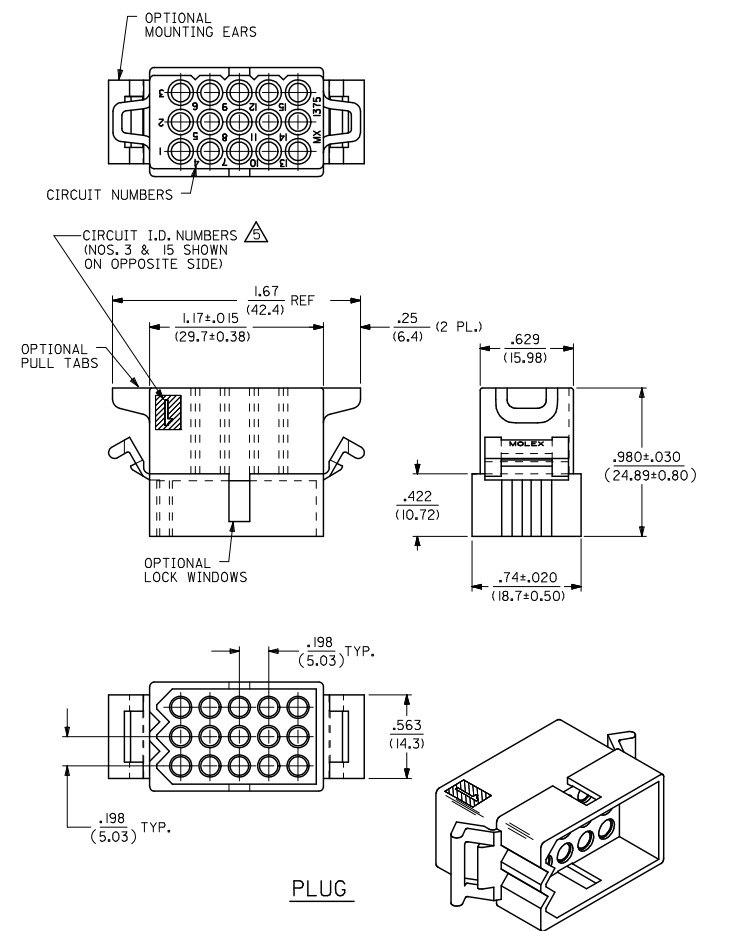


13 12 11 10 9 8 7 6 5 4 3 2 1



RECEPTACLE



PLUG

<b>UPDATE TITLE BLOCK</b> EC NO. UCP2007-2415 2007/04/17 DR. W. H. L. H. G. 2007/05/03 CH. K. O. S. C. H. M. I. T. 2007/05/03 A. P. P. R. O. V. E. D. 2007/05/03 A. P. P. R. O. V. E. D.	<b>QUALITY SYMBOLS</b> ▽=0 ▽=0	<b>GENERAL TOLERANCES (UNLESS SPECIFIED)</b>		<b>DIMENSION STYLE</b> IN/MM		SCALE 2:1	DESIGN UNITS INCH	THIRD ANGLE PROJECTION	
		4 PLACES ±.010 ±.010 3 PLACES ±.010 ±.010 2 PLACES ±.025 ±.014 1 PLACE ±.035 ±.010 ANGULAR ±1/2°	mm INCH DRAWN BY KBW DATE 01/14/1989 CHECKED BY RW DATE 01/14/1989 APPROVED BY RAS DATE 01/14/1989	TITLE .093/(2.36) HOUSINGS PLUG & RECEPTACLE 15 CIRCUIT, .198/(5.03)CL					
		DRAFT WHERE APPLICABLE MUST REMAIN WITHIN DIMENSIONS		SEE CHART		MATERIAL NO. SD-1375-* DOCUMENT NO.		SHEET NO. 1 OF 2	
		THIS DRAWING CONTAINS INFORMATION THAT IS PROPRIETARY TO MOLEX INCORPORATED AND SHOULD NOT BE USED WITHOUT WRITTEN PERMISSION							

12 11 10 9 8 7 6 5 4 3 2 1

PLUG				RECEPTACLE		
ORDER NO	ENG NO	PACKAGING		ORDER NO	ENG NO	PACKAGING
03-09-2151	I375-P	PK-1375-001		03-09-1151	I375-R	PK-1375-001
03-09-2159	I375-P4	PK-1375-002		03-09-1152	I375-R1	PK-1375-001
03-09-2158	I375-P7	PK-1375-001		03-09-1154	I375-R6	PK-1375-001
03-09-7158	I375-P7BK	PK-1375-001	OBSOL.	03-09-1157	I375-R6-1	PK-1375-001
				03-09-6154	I375-R6BK	PK-1375-001

**LEGEND FOR PLUG:**

**1375-P\*\*\***

OPTIONS:

BLANK = W/O EARS, W/ PULL TABS, W/O LOCK WINDOWS  
 2 = W/ STANDARD EARS, W/O PULL TABS, W/O LOCK WINDOWS  
 4 = W/ PREBENT EARS, W/O PULL TABS, W/ LOCK WINDOWS  
 6 = W/O EARS, W/O PULL TABS, W/ LOCK WINDOWS  
 7 = W/O EARS, W/ PULL TABS, W/ LOCK WINDOWS  
 8 = W/ PREBENT EARS, W/O PULL TABS, W/O LOCK WINDOWS

COLOR:

BLANK = NATURAL COLOR  
 AM = AMBER BK = BLACK BU = BLUE  
 BN = BROWN GY = GRAY GN = GREEN  
 OR = ORANGE RD = RED YW = YELLOW

**LEGEND FOR RECEPTACLE:**

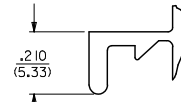
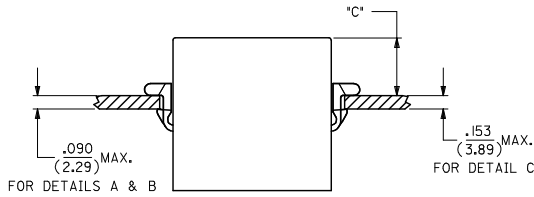
**1375-R\*\*\***

OPTIONS:

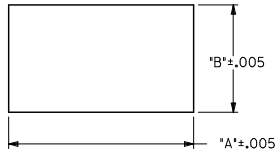
BLANK = W/ PREBENT EARS, W/O LOCK RAMPS  
 1 = W/O EARS, W/O LOCK RAMPS  
 6 = W/ STANDARD EARS & LOCK RAMPS  
 6-1 = W/O EARS, W/ LOCK RAMPS

COLOR:

BLANK = NATURAL COLOR  
 AM = AMBER BK = BLACK BU = BLUE  
 BN = BROWN GY = GRAY GN = GREEN  
 OR = ORANGE RD = RED YW = YELLOW

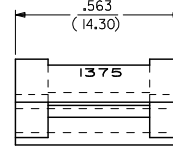


DETAIL A  
 .093/(2.36) STANDARD MOUNTING EAR  
 (SCALE 4:1)

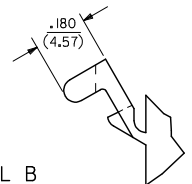


RECOMMENDED PANEL OPENING

HOUSING	DIM. *A*	DIM. *B*	*C* PREBENT EAR	*C* STANDARD EAR	*C* SPECIAL EAR
PLUG	1.343/(34.11)	.760/(19.30)	.40/(10.2)	.36/(9.1)	
RECEPT. W/ RAMPS	1.240/(31.50)	.725/(18.42)	.41/(10.4)	.37/(9.4)	.31/(7.8)
RECEPT. W/O RAMPS	1.240/(31.50)	.655/(16.64)	.41/(10.4)	.37/(9.4)	.31/(7.8)



DETAIL B  
 .093/(2.36) PREBENT MOUNTING EAR  
 (SCALE 4:1)



**NOTES :**

- MATERIAL : NYLON TYPE 6/6, 94V-2.
- FINISH : NONE.
- PRODUCT SPECIFICATION : PS-02-09.
- PACKAGING INFORMATION : SEE CHART.
- ETCHED CIRCUIT I.D. NUMBERS ON SIDE OF HOUSINGS TO BE PRESENT ON PARTS FROM TOOLS BUILT AFTER 2/28/94.
- PARTS CONFORM TO CLASS B REQUIREMENTS OF COSMETIC SPECIFICATION PS-45499-002.

<b>ADD NOTES 2, 4 &amp; 6</b> EC NO. UCP2007-2415 DR. W. H. L. H. G. 2007/04/17 CH. K. O. S. C. H. M. I. T. 2007/05/03 APP. R. E. S. M. I. T. H. 2007/05/03	QUALITY SYMBOLS ▽=0 ▽=0	GENERAL TOLERANCES (UNLESS SPECIFIED)		DIMENSION STYLE IN/MM		SCALE 1:1	DESIGN UNITS INCH	THIRD ANGLE PROJECTION	
		4 PLACES ±.010 ±.010	mm	INCH	DRAWN BY KBW	DATE 6/14/1989	TITLE .093/(2.36) HOUSINGS PLUG & RECEPTACLE 15 CIRCUIT .198/(5.03) CL		
		3 PLACES ±.025 ±.014	mm	INCH	CHECKED BY RW	DATE 6/14/1989	MOLEX INCORPORATED		
		1 PLACE ±0.35 ±---	mm	INCH	APPROVED BY RAS	DATE 6/14/1989	MATERIAL NO. DOCUMENT NO. SHEET NO. 2 OF 2		
DRAFT WHERE APPLICABLE MUST REMAIN WITHIN DIMENSIONS		SEE CHART		THIS DRAWING CONTAINS INFORMATION THAT IS PROPRIETARY TO MOLEX INCORPORATED AND SHOULD NOT BE USED WITHOUT WRITTEN PERMISSION		SD-1375-*			