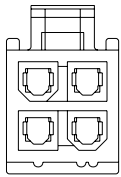
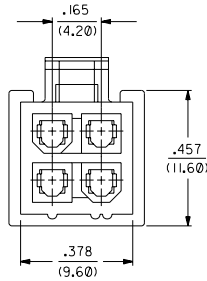
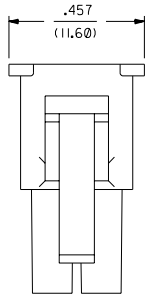


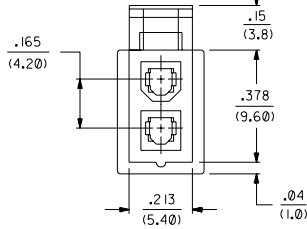
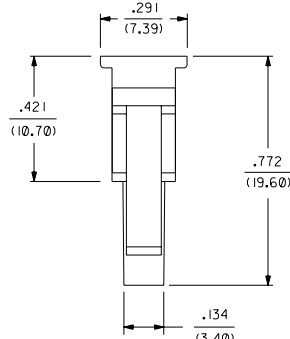
PART NUMBER	ENG. NUMBER	MATERIAL (SEE NOTE 1)
39-01-3028	5557-02R1-210	94V-0
39-01-3048	5557-04R1-210	94V-0
39-01-3022	5557-02R1	94V-2
39-01-3042	5557-04R1	94V-2
15-04-6021	5557-02R1-220	94V-2, U.V. STABLE
NO E.D.P.	5557-04R1-220	94V-2, U.V. STABLE
39-01-6026	5557-02R1-BL	94V-2, BLACK
NO E.D.P.	5557-04R1-BL	94V-2, BLACK



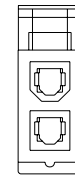
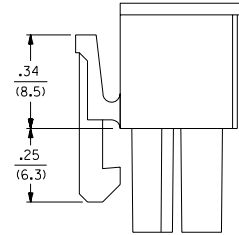
5557-04R-\*\*-  
(WITHOUT SIDE PULL TABS)  
(SHOWN FOR REFERENCE ONLY)



5557-04R1-\*\*-



5557-02R1-\*\*-

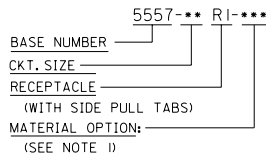


5557-02R-\*\*-  
(WITHOUT SIDE PULL TABS)  
(SHOWN FOR REFERENCE ONLY)

**NOTES:**

- MATERIAL:  
 \*BLANK\* = NYLON 6/6, U.L. 94V-2, COLOR: NATURAL.  
 \*210\* = NYLON 6/6, U.L. 94V-0, COLOR: NATURAL.  
 \*220\* = NYLON 6/6, U.L. 94V-2, U.V. STABILIZED, COLOR: BLACK.  
 \*BL\* = NYLON 6/6, U.L. 94V-2, COLOR: BLACK.
- PART IS FOR USE WITH MOLEX FEMALE TERMINAL #5556.
- PART MATES WITH MOLEX PLUG #5559.
- PART IS DESIGNED IN METRIC.
- PRODUCT SPECIFICATION: PS-5556-001.
- PARTS TO BE PACKAGED PER PK-5557-002

**LEGEND:**



REV.	DESCRIPTION
G1	ADD NOTE 6 ECN #1022004-0347 CSTEWART.03-09-19
G	REV PS NOTE 10/2003-0396 9/3/2002 SAMEEC
F	ADDED -BL OPTION PER ECN U11972 10-8-91 RJF
E1	94V-2 WAS 94V-0 ECN U11507 GEP 7-26-91 RJF
E	ADDED NOTE 5 ECN U11273 GEP 7-26-91 RJF
D	ADDED -NR VIEWS ECR U10958 2-27-91 RJF
C	ADDED DIM'S PER ECR U06735 GEP 10-4-90 RJF
B	REDRAWN ON CAD ECR U09570 GEP 8-9-90 RJF

DIMENSIONS SHOWN (METRIC) INCH		MFG. SH. REV. LTR. REVISIONS	
UNLESS OTHERWISE SPECIFIED TOLERANCES ANGULAR ± 0.2°		REVISE ONLY ON CAD SYSTEM	
1 PLACE ± .015	---	TITLE 2 & 4 CKT. RECEPTACLE, MINI-FIT JR. SERIES	
2 PLACE ± .03	± .38	MOLEX INCORPORATED SHEET NO. DATE U.S.A. 1 OF 1 8 / 8 / 90	
3 PLACE ± .05	± .50	PART NO. DRWG. NO. SD-5557-**-RI-**-	
DRAFT WHERE APPLICABLE MUST REMAIN WITHIN DIMENSIONS		SEE CHART	
DRG. BY: GEP	CHK'D. BY: RJF	NO DRAWING CONTAINS INFORMATION THAT IS PROPRIETARY TO MOLEX INC. AND SHOULD NOT BE USED WITHOUT WRITTEN PERMISSION.	
APP'D. RAS	SCALE 4 : 1	FILE NAME 5555124X1	DRY. / SIZE CP / C